



Test Report issued under the responsibility of:



**TEST REPORT
IEC 62133-2**

Secondary cells and batteries containing alkaline or other non-acid electrolytes – Safety requirements for portable sealed secondary cells, and for batteries made from them, for use in portable applications – Part 2: Lithium systems

Report Number..... : KTCSZ20230809001
Date of issue..... : Aug. 24, 2023
Total number of pages : 35 pages (Including 2 attachment)

Name of Testing Laboratory preparing the Report : Korea Testing Certification Institute (Shanghai) Co., Ltd. Shenzhen Branch

Applicant's name : Shandong Xin'an Chuangneng New Energy Co., Ltd.
Address..... : Northwest of the intersection of Taichung Road and Huaming Road, Taichung Town, Taierzhuang District, Zaozhuang City, Shandong Province, China

Test specification:

Standard : IEC 62133-2:2017, IEC 62133-2:2017/AMD1:2021
Test procedure : CB Scheme
Non-standard test method : N/A

TRF template used..... : IECEE OD-2020-F1:2021, Ed.1.4

Test Report Form No. : IEC62133_2C

Test Report Form(s) Originator : DEKRA Certification B.V.

Master TRF : Dated 2022-07-01

Copyright © 2022 IEC System of Conformity Assessment Schemes for Electrotechnical Equipment and Components (IECEE System). All rights reserved.

This publication may be reproduced in whole or in part for non-commercial purposes as long as the IECEE is acknowledged as copyright owner and source of the material. IECEE takes no responsibility for and will not assume liability for damages resulting from the reader's interpretation of the reproduced material due to its placement and context.

If this Test Report Form is used by non-IECEE members, the IECEE/IEC logo and the reference to the CB Scheme procedure shall be removed.

This report is not valid as a CB Test Report unless signed by an approved IECEE Testing Laboratory and appended to a CB Test Certificate issued by an NCB in accordance with IECEE 02.

General disclaimer:

The test results presented in this report relate only to the object tested.

This report shall not be reproduced, except in full, without the written approval of the Issuing NCB. The authenticity of this Test Report and its contents can be verified by contacting the NCB, responsible for this Test Report.

Test item description :	Rechargeable Lithium-ion Cell	
Trade Mark(s)	N/A	
Manufacturer	Same as applicant	
Model/Type reference	18650-2500mAh, 18650-2200mAh, 18650-2000mAh, 18650-1800mAh	
Ratings	3.7Vdc, 2500mAh, 9.25Wh (model: 18650-2500mAh) 3.7Vdc, 2200mAh, 8.14Wh (model: 18650-2200mAh) 3.7Vdc, 2000mAh, 7.4Wh (model: 18650-2000mAh) 3.7Vdc, 1800mAh, 6.66Wh (model: 18650-1800mAh)	
Responsible Testing Laboratory (as applicable), testing procedure and testing location(s):		
<input checked="" type="checkbox"/>	CB Testing Laboratory:	Korea Testing Certification Institute (Shanghai) Co., Ltd. Shenzhen Branch
Testing location/ address :	1/F., Building 3, Yibaolai Industrial City, Qiaotou, Fuhai Street, Bao'an District, Shenzhen, Guangdong, China	
Tested by (name, function, signature) :	Jerry Lu	<i>Jerry Lu</i>
Approved by (name, function, signature) ... :	John Zhao	<i>John Zhao</i>
<input type="checkbox"/>	Testing procedure: CTF Stage 1:	
Testing location/ address :		
Tested by (name, function, signature) :		
Approved by (name, function, signature) ... :		
<input type="checkbox"/>	Testing procedure: CTF Stage 2:	
Testing location/ address :		
Tested by (name + signature)		
Witnessed by (name, function, signature) . :		
Approved by (name, function, signature) ... :		
<input type="checkbox"/>	Testing procedure: CTF Stage 3:	
<input type="checkbox"/>	Testing procedure: CTF Stage 4:	
Testing location/ address :		
Tested by (name, function, signature) :		
Witnessed by (name, function, signature) . :		
Approved by (name, function, signature) ... :		
Supervised by (name, function, signature) :		

<p>List of Attachments (including a total number of pages in each attachment): Attachment No.1: (Republic of Korea) National Differences(3 pages); Attachment No.2: Photo document(4 pages).</p>	
<p>Summary of testing:</p>	
<p>Tests performed (name of test and test clause): All applicable tests as described in the compliance checklist were performed at Korea Testing Certification Institute (Shanghai) Co., Ltd. Shenzhen Branch</p>	<p>Testing location: Korea Testing Certification Institute (Shanghai) Co., Ltd. Shenzhen Branch 1/F., Building 3, Yibaolai Industrial City, Qiaotou, Fuhai Street, Bao'an District, Shenzhen, Guangdong, China</p>
<p>Summary of compliance with National Differences (List of countries addressed): KR National Difference</p> <p><input checked="" type="checkbox"/> The product fulfils the requirements of KC62133-2(2020-07), EN 62133-2:2017/A1:2021, BS EN 62133-2:2017/A1:2021</p>	
<p>Use of uncertainty of measurement for decisions on conformity (decision rule) :</p> <p><input checked="" type="checkbox"/> No decision rule is specified by the IEC standard, when comparing the measurement result with the applicable limit according to the specification in that standard. The decisions on conformity are made without applying the measurement uncertainty ("simple acceptance" decision rule, previously known as "accuracy method").</p> <p><input type="checkbox"/> Other:... (to be specified, for example when required by the standard or client, or if national accreditation requirements apply)</p> <p>Information on uncertainty of measurement: The uncertainties of measurement are calculated by the laboratory based on application of criteria given by OD-5014 for test equipment and application of test methods, decision sheets and operational procedures of IECEE. IEC Guide 115 provides guidance on the application of measurement uncertainty principles and applying the decision rule when reporting test results within IECEE scheme, noting that the reporting of the measurement uncertainty for measurements is not necessary unless required by the test standard or customer. Calculations leading to the reported values are on file with the NCB and testing laboratory that conducted the testing.</p>	

Copy of marking plate:

The artwork below may be only a draft. The use of certification marks on a product must be authorized by the respective NCBs that own these marks.

Rechargeable Lithium-ion Cell
 Model: 18650-2500mAh
 3.7Vdc, 2500mAh, 9.25Wh
 + INR19/66 Date code: YY/MM/DD -
 Shandong Xin'an Chuangneng New Energy Co., Ltd.
 WARNING:
 Do not disassemble, puncture, crush, heat, or burn.

Label 1 (model: 18650-2500mAh)

Rechargeable Lithium-ion Cell
 Model: 18650-2200mAh
 3.7Vdc, 2200mAh, 8.14Wh
 + INR19/66 Date code: YY/MM/DD -
 Shandong Xin'an Chuangneng New Energy Co., Ltd.
 WARNING:
 Do not disassemble, puncture, crush, heat, or burn.

Label 2 (model: 18650-2200mAh)

Rechargeable Lithium-ion Cell
 Model: 18650-2000mAh
 3.7Vdc, 2000mAh, 7.4Wh
 + INR19/66 Date code: YY/MM/DD -
 Shandong Xin'an Chuangneng New Energy Co., Ltd.
 WARNING:
 Do not disassemble, puncture, crush, heat, or burn.

Label 3 (model: 18650-2000mAh)

Rechargeable Lithium-ion Cell
 Model: 18650-1800mAh
 3.7Vdc, 1800mAh, 6.66Wh
 + INR19/66 Date code: YY/MM/DD -
 Shandong Xin'an Chuangneng New Energy Co., Ltd.
 WARNING:
 Do not disassemble, puncture, crush, heat, or burn.

Label 4 (model: 18650-1800mAh)

Remark:

1. "YY/MM/DD" is date code, in which "YY" represents year of Manufacturing, "MM" represents month of manufacturing, "DD" represents day of Manufacturing.
2. Due to similarity of the marking plate, only labels of three representative models listed.

Test item particulars.....:	
Classification of installation and use.....:	N/A
Supply Connection	N/A
Recommend charging method declared by the manufacturer	CC/CV
Discharge current (0,2 It A)	500mA (model: 18650-2500mAh) 440mA (model: 18650-2200mAh) 400mA (model: 18650-2000mAh) 360mA (model: 18650-1800mAh)
Specified final voltage.....:	2.75V
Upper limit charging voltage per cell.....:	4.2V
Maximum charging current	2500mA (model: 18650-2500mAh) 2200mA (model: 18650-2200mAh) 2000mA (model: 18650-2000mAh) 1800mA (model: 18650-1800mAh)
Charging temperature upper limit	45°C
Charging temperature lower limit.....:	0°C
Polymer cell electrolyte type.....:	<input type="checkbox"/> gel polymer <input type="checkbox"/> solid polymer <input checked="" type="checkbox"/> N/A
Possible test case verdicts:	
- test case does not apply to the test object..... : N/A	
- test object does meet the requirement..... : P (Pass)	
- test object does not meet the requirement..... : F (Fail)	
Testing.....:	
Date of receipt of test item	Aug. 09, 2023
Date (s) of performance of tests	Aug. 09, 2023 to Aug. 24, 2023
General remarks:	
"(See Enclosure #)" refers to additional information appended to the report.	
"(See appended table)" refers to a table appended to the report.	
Throughout this report a <input type="checkbox"/> comma / <input checked="" type="checkbox"/> point is used as the decimal separator.	
Manufacturer's Declaration per sub-clause 4.2.5 of IEC62 02:	
The application for obtaining a CB Test Certificate includes more than one factory location and a declaration from the Manufacturer stating that the sample(s) submitted for evaluation is (are) representative of the products from each factory has been provided	<input type="checkbox"/> Yes <input checked="" type="checkbox"/> Not applicable
When differences exist; they shall be identified in the General product information section.	

Name and address of factory (ies) : Same as applicant

General product information and other remarks:

The cell consists of the positive electrode plate, negative electrode plate, separator, electrolyte and case. The positive and negative electrode plates are housed in the case in the state being separated by the separator.

18650-2500mAh, 18650-2200mAh, 18650-2000mAh and 18650-1800mAh has same voltage, same construction design, same size, same chemical material except the model names and nominal capacity. The models 18650-2500mAh, 18650-2000mAh, and 18650-1800mAh were selected for all testing.

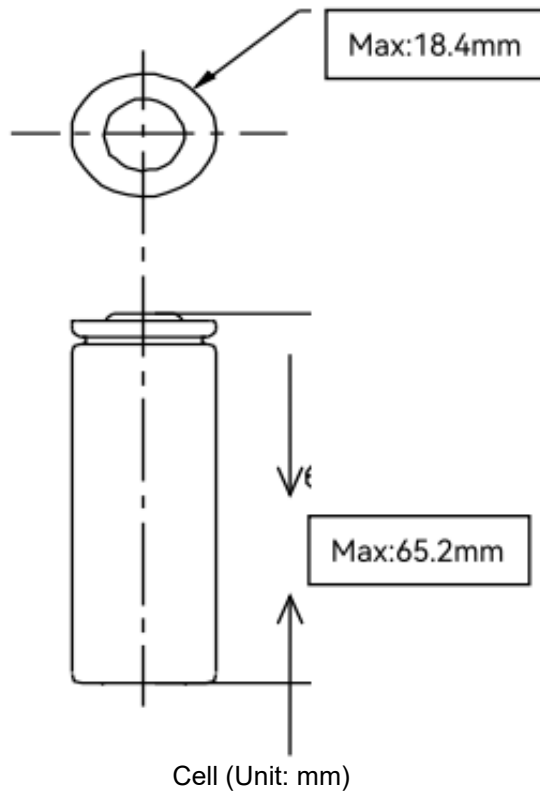
The main features of the cell are shown as below (clause 7.1.1):

Model	Nominal capacity	Nominal voltage	Nominal Charge Current	Nominal Discharge Current	Maximum Charge Current	Maximum Discharge Current	Maximum Charge Voltage	Cut-off Voltage
18650-2500mAh	2500mAh	3.7V	1250mA	2500mA	2500mA	7500mA	4.2V	2.75V
18650-2200mAh	2200mAh	3.7V	1100mA	2200mA	2200mA	6600mA	4.2V	2.75V
18650-2000mAh	2000mAh	3.7V	1000mA	2000mA	2000mA	6000mA	4.2V	2.75V
18650-1800mAh	1800mAh	3.7V	900mA	1800mA	1800mA	5400mA	4.2V	2.75V

The main features of the cell are shown as below (clause 7.1.2):

Model	Upper limit charge voltage	Taper-off current	Lower charge temperature	Upper charge temperature
18650-2500mAh	4.2V	125mA	0°C	45°C
18650-2200mAh	4.2V	110mA	0°C	45°C
18650-2000mAh	4.2V	100mA	0°C	45°C
18650-1800mAh	4.2V	90mA	0°C	45°C

Construction:



Circuit diagram:

None, Cell only.

IEC 62133-2			
Clause	Requirement + Test	Result - Remark	Verdict
4	PARAMETER MEASUREMENT TOLERANCES		P
	Parameter measurement tolerances		P
5	GENERAL SAFETY CONSIDERATIONS		P
5.1	General		P
	Cells and batteries so designed and constructed that they are safe under conditions of both intended use and reasonably foreseeable misuse		P
5.2	Insulation and wiring		P
	The insulation resistance between the positive terminal and externally exposed metal surfaces of the battery (excluding electrical contact surfaces) is not less than 5 MΩ	No metal surface exists.	N/A
	Insulation resistance (MΩ) :		—
	Internal wiring and insulation are sufficient to withstand maximum anticipated current, voltage and temperature requirements		P
	Orientation of wiring maintains adequate clearances and creepage distances between conductors		P
	Mechanical integrity of internal connections accommodates reasonably foreseeable misuse		P
5.3	Venting		P
	Battery cases and cells incorporate a pressure relief mechanism or are constructed so that they relieve excessive internal pressure at a value and rate that will preclude rupture, explosion and self-ignition	Venting mechanism exists on top of cylindrical cell.	P
	Encapsulation used to support cells within an outer casing does not cause the battery to overheat during normal operation nor inhibit pressure relief		N/A
5.4	Temperature, voltage and current management	Cell only.	N/A
	Batteries are designed such that abnormal temperature rise conditions are prevented		N/A
	Batteries are designed to be within temperature, voltage and current limits specified by the cell manufacturer		N/A
	Batteries are provided with specifications and charging instructions for equipment manufacturers so that specified chargers are designed to maintain charging within the temperature, voltage and current limits specified		N/A
5.5	Terminal contacts		P
	The size and shape of the terminal contacts ensure that they can carry the maximum anticipated current		P

IEC 62133-2			
Clause	Requirement + Test	Result - Remark	Verdict
	External terminal contact surfaces are formed from conductive materials with good mechanical strength and corrosion resistance		P
	Terminal contacts are arranged to minimize the risk of short circuits		P
5.6	Assembly of cells into batteries	Cell only.	N/A
5.6.1	General		N/A
	Each battery has an independent control and protection for current, voltage, temperature and any other parameter required for safety and to maintain the cells within their operating region		N/A
	This protection may be provided external to the battery such as within the charger or the end devices		N/A
	If protection is external to the battery, the manufacturer of the battery provide this safety relevant information to the external device manufacturer for implementation		N/A
	If there is more than one battery housed in a single battery case, each battery has protective circuitry that can maintain the cells within their operating regions		N/A
	Manufacturers of cells specify current, voltage and temperature limits so that the battery manufacturer/designer may ensure proper design and assembly		N/A
	Batteries that are designed for the selective discharge of a portion of their series connected cells incorporate circuitry to prevent operation of cells outside the limits specified by the cell manufacturer		N/A
	Protective circuit components are added as appropriate and consideration given to the end-device application		N/A
	The manufacturer of the battery provide a safety analysis of the battery safety circuitry with a test report including a fault analysis of the protection circuit under both charging and discharging conditions confirming the compliance		N/A
5.6.2	Design recommendation		N/A
	For the battery consisting of a single cell or a single cellblock, it is recommended that the charging voltage of the cell does not exceed the upper limit of the charging voltage specified in Table 2		N/A

IEC 62133-2			
Clause	Requirement + Test	Result - Remark	Verdict
	For the battery consisting of series-connected plural single cells or series-connected plural cellblocks, it is recommended that the voltages of any one of the single cells or single cellblocks does not exceed the upper limit of the charging voltage, specified in Table 2, by monitoring the voltage of every single cell or the single cellblocks		N/A
	For the battery consisting of series-connected plural single cells or series-connected plural cellblocks, it is recommended that charging is stopped when the upper limit of the charging voltage is exceeded for any one of the single cells or single cellblocks by measuring the voltage of every single cell or the single cellblocks		N/A
	For batteries consisting of series-connected cells or cell blocks, nominal charge voltage are not counted as an overcharge protection		N/A
	For batteries consisting of series-connected cells or cell blocks, cells have closely matched capacities, be of the same design, be of the same chemistry and be from the same manufacturer		N/A
	It is recommended that the cells and cell blocks are not discharged beyond the cell manufacturer's specified final voltage		N/A
	For batteries consisting of series-connected cells or cell blocks, cell balancing circuitry are incorporated into the battery management system		N/A
5.6.3	Mechanical protection for cells and components of batteries		N/A
	Mechanical protection for cells, cell connections and control circuits within the battery are provided to prevent damage as a result of intended use and reasonably foreseeable misuse		N/A
	The mechanical protection can be provided by the battery case or it can be provided by the end product enclosure for those batteries intended for building into an end product		N/A
	The battery case and compartments housing cells are designed to accommodate cell dimensional tolerances during charging and discharging as recommended by the cell manufacturer		N/A
	For batteries intended for building into a portable end product, testing with the battery installed within the end product is considered when conducting mechanical tests		N/A
5.7	Quality plan		P

IEC 62133-2			
Clause	Requirement + Test	Result - Remark	Verdict
	The manufacturer prepares and implements a quality plan that defines procedures for the inspection of materials, components, cells and batteries and which covers the whole process of producing each type of cell or battery	Complied. Quality plan provided.	P
5.8	Battery safety components	See TABLE:Critical components information	N/A
6	TYPE TEST AND SAMPLE SIZE		P
	Tests are made with the number of cells or batteries specified in Table 1 using cells or batteries that are not more than six months old		P
	The internal resistance of coin cells are measured in accordance with Annex D. Coin cells with internal resistance less than or equal to 3 Ω are tested in accordance with Table 1	Not coin cells.	N/A
	Unless otherwise specified, tests are carried out in an ambient temperature of 20 °C \pm 5 °C		P
	The safety analysis of 5.6.1 identify those components of the protection circuit that are critical for short-circuit, overcharge and over discharge protection	Cell only.	N/A
	When conducting the short-circuit test, consideration is given to the simulation of any single fault condition that is likely to occur in the protecting circuit that would affect the short-circuit test	Cell only.	N/A
7	SPECIFIC REQUIREMENTS AND TESTS		P
7.1	Charging procedure for test purposes		P
7.1.1	First procedure		P
	This charging procedure applies to subclauses other than those specified in 7.1.2		P
	Unless otherwise stated in this document, the charging procedure for test purposes is carried out in an ambient temperature of 20 °C \pm 5 °C, using the method declared by the manufacturer	See page 6.	P
	Prior to charging, the battery has been discharged at 20 °C \pm 5 °C at a constant current of 0,2 It A down to a specified final voltage	See page 6.	P
7.1.2	Second procedure		P
	This charging procedure applies only to 7.3.1, 7.3.4, 7.3.5, and 7.3.9		P

IEC 62133-2			
Clause	Requirement + Test	Result - Remark	Verdict
	After stabilization for 1 h to 4 h, at an ambient temperature of the highest test temperature and the lowest test temperature, respectively, as specified in Table 2, cells are charged by using the upper limit charging voltage and maximum charging current, until the charging current is reduced to 0,05 It A, using a constant current to constant voltage charging method	Charge temperature specified by manufacturer: 0-45°C. 45°C used for upper limit test temperature. 0°C used for lower limit test temperature.	P
7.2	Intended use		P
7.2.1	Continuous charging at constant voltage (cells)	Tested complied.	P
	Fully charged cells are subjected for 7 days to a charge using the charging method for current and standard voltage specified by the cell manufacturer	18650-2500mAh: Charging for 7days with 1250mA. 18650-2000mAh: Charging for 7days with 1000mA. 18650-1800mAh: Charging for 7days with 900mA.	P
	Results: no fire, no explosion, no leakage.....:	(See appended table 7.2.1)	P
7.2.2	Case stress at high ambient temperature (battery)	Cell only.	N/A
	Oven temperature (°C).....:		—
	Results: no physical distortion of the battery case resulting in exposure of internal protective components and cells		N/A
7.3	Reasonably foreseeable misuse		P
7.3.1	External short-circuit (cell)	Tested complied.	P
	The cells were tested until one of the following occurred:		P
	- 24 hours elapsed; or		N/A
	- The case temperature declined by 20 % of the maximum temperature rise		P
	Results: no fire, no explosion.....:	(See appended table 7.3.1)	P
7.3.2	External short-circuit (battery)	Cell only.	N/A
	The batteries were tested until one of the following occurred:		N/A
	- 24 hours elapsed; or		N/A
	- The case temperature declined by 20 % of the maximum temperature rise		N/A
	In case of rapid decline in short circuit current, the battery pack remained on test for an additional one hour after the current reached a low end steady state condition		N/A
	A single fault in the discharge protection circuit is conducted on one to four (depending upon the protection circuit) of the five samples before conducting the short-circuit test		N/A

IEC 62133-2			
Clause	Requirement + Test	Result - Remark	Verdict
	A single fault applies to protective component parts such as MOSFET (metal oxide semiconductor field-effect transistor), fuse, thermostat or positive temperature coefficient (PTC) thermistor		N/A
	Results: no fire, no explosion..... :	(See appended table 7.3.2)	N/A
7.3.3	Free fall	Tested complied.	P
	Results: no fire, no explosion	No fire. No explosion	P
7.3.4	Thermal abuse (cells)	Tested complied.	P
	Oven temperature (°C)..... :	130°C	—
	Results: no fire, no explosion	No fire. No explosion	P
7.3.5	Crush (cells)	Tested complied.	P
	The crushing force was released upon:		P
	- The maximum force of 13 kN ± 0,78 kN has been applied; or		P
	- An abrupt voltage drop of one-third of the original voltage has been obtained		N/A
	Results: no fire, no explosion..... :	(See appended table 7.3.5)	P
7.3.6	Over-charging of battery	Cell only.	N/A
	The supply voltage which is:		N/A
	- 1,4 times the upper limit charging voltage presented in Table A.1 (but not to exceed 6,0 V) for single cell/cell block batteries or		N/A
	- 1,2 times the upper limit charging voltage resented in Table A.1 per cell for series connected multi-cell batteries, and		N/A
	- Sufficient to maintain a current of 2,0 It A throughout the duration of the test or until the supply voltage is reached		N/A
	Test was continued until the temperature of the outer casing:		N/A
	- Reached steady state conditions (less than 10 °C change in 30-minute period); or		N/A
	- Returned to ambient		N/A
	Results: no fire, no explosion..... :	(See appended table 7.3.6)	N/A
7.3.7	Forced discharge (cells)	Tested complied.	P
	Discharge a single cell to the lower limit discharge voltage specified by the cell manufacturer	Lower limit discharge voltage 2.75V.	P
	The discharged cell is then subjected to a forced discharge at 1 It A to the negative value of the upper limit charging voltage		P

IEC 62133-2			
Clause	Requirement + Test	Result - Remark	Verdict
	- The discharge voltage reaches the negative value of upper limit charging voltage within the testing duration. The voltage is maintained at the negative value of the upper limit charging voltage by reducing the current for the remainder of the testing duration		N/A
	- The discharge voltage does not reach the negative value of upper limit charging voltage within the testing duration. The test is terminated at the end of the testing duration		P
	Results: no fire, no explosion..... :	(See appended table 7.3.7)	P
7.3.8	Mechanical tests (batteries)	Cell only.	N/A
7.3.8.1	Vibration		N/A
	Results: no fire, no explosion, no rupture, no leakage or venting. :	(See appended table 7.3.8.1)	N/A
7.3.8.2	Mechanical shock		N/A
	Results: no leakage, no venting, no rupture, no explosion and no fire :	(See appended table 7.3.8.2)	N/A
7.3.9	Design evaluation – Forced internal short-circuit (cells)	Tested complied.	P
	The cells complied with national requirement for :	France, Japan, Korea, Switzerland	—
	The pressing was stopped upon:		P
	- A voltage drop of 50 mV has been detected; or		N/A
	- The pressing force of 800 N (cylindrical cells) or 400 N (prismatic cells) has been reached	800N for cylindrical cells.	P
	Results: no fire..... :	(See appended table 7.3.9)	P

8	INFORMATION FOR SAFETY		P
8.1	General		P
	Manufacturers of secondary cells provides information about current, voltage and temperature limits of their products	Cell specifications provided.	P
	Manufacturers of batteries provides information regarding how to minimize and mitigate hazards to equipment manufacturers or end-users	Cell only.	N/A
	Systems analyses are performed by device manufacturers to ensure that a particular battery design prevents hazards from occurring during use of a product		N/A
	As appropriate, any information relating to hazard avoidance resulting from a system analysis is provided to the end user		N/A
8.2	Small cell and battery safety information	Not small cells.	N/A

IEC 62133-2			
Clause	Requirement + Test	Result - Remark	Verdict

	The following warning language is to be provided with the information packaged with the small cells and batteries or equipment using them:		N/A
	- Keep small cells and batteries which are considered swallowable out of the reach of children		N/A
	- Swallowing may lead to burns, perforation of soft tissue, and death. Severe burns can occur within 2 h of ingestion		N/A
	- In case of ingestion of a cell or battery, seek medical assistance promptly		N/A

9	MARKING		P
9.1	Cell marking		P
	Cells are marked as specified in IEC 61960, except coin cells	See marking plate on page 4.	P
	Coin cells whose external surface area is too small to accommodate the markings on the cells show the designation and polarity	Not coin cells.	N/A
	By agreement between the cell manufacturer and the battery and/or end product manufacturer, component cells used in the manufacture of a battery need not be marked		N/A
9.2	Battery marking	Cell only.	N/A
	Batteries are marked as specified in IEC 61960, except for coin batteries		N/A
	Coin batteries whose external surface area is too small to accommodate the markings on the batteries show the designation and polarity		N/A
	Batteries are marked with an appropriate caution statement		N/A
	- Terminals have clear polarity marking on the external surface of the battery, or		N/A
	- Not be marked with polarity markings if the design of the external connector prevents reverse polarity connections		N/A
9.3	Caution for ingestion of small cells and batteries	Not small cells.	N/A
	Coin cells and batteries identified as small batteries include a caution statement regarding the hazards of ingestion in accordance with 8.2		N/A
	Small cells and batteries are intended for direct sale in consumer-replaceable applications, caution for ingestion is given on the immediate package		N/A
9.4	Other information		N/A

IEC 62133-2			
Clause	Requirement + Test	Result - Remark	Verdict

	The following information are marked on or supplied with the battery:		N/A
	- Storage and disposal instructions		N/A
	- Recommended charging instructions		N/A

10	PACKAGING AND TRANSPORT		N/A
	Packaging for coin cells are not be small enough to fit within the limits of the ingestion gauge of Figure 3	Not coin cells.	N/A

ANNEX A	CHARGING AND DISCHARGING RANGE OF SECONDARY LITHIUM ION CELLS FOR SAFE USE		P
A.1	General		P
A.2	Safety of lithium ion secondary battery	Complied.	P
A.3	Consideration on charging voltage	Complied.	P
A.3.1	General		P
A.3.2	Upper limit charging voltage	4.2V applied.	P
A.3.2.1	General		P
A.3.2.2	Explanation of safety viewpoint		P
A.3.2.3	Safety requirements, when different upper limit charging voltage is applied	4.2V applied.	N/A
A.4	Consideration of temperature and charging current		P
A.4.1	General		P
A.4.2	Recommended temperature range	See A.4.2.2.	P
A.4.2.1	General		P
A.4.2.2	Safety consideration when a different recommended temperature range is applied	Charging temperature declared by client is: 0-45°C.	P
A.4.3	High temperature range	Not higher than the temperature range specific in this standard.	N/A
A.4.3.1	General		N/A
A.4.3.2	Explanation of safety viewpoint		N/A
A.4.3.3	Safety considerations when specifying charging conditions in the high temperature range	45°C applied.	N/A
A.4.3.4	Safety considerations when specifying a new upper limit in the high temperature range		N/A
A.4.4	Low temperature range	Not lower than the temperature range specific in this standard.	N/A
A.4.4.1	General		N/A

IEC 62133-2			
Clause	Requirement + Test	Result - Remark	Verdict
A.4.4.2	Explanation of safety viewpoint		N/A
A.4.4.3	Safety considerations, when specifying charging conditions in the low temperature range		N/A
A.4.4.4	Safety considerations when specifying a new lower limit in the low temperature range	0°C applied.	N/A
A.4.5	Scope of the application of charging current		P
A.4.6	Consideration of discharge		P
A.4.6.1	General		P
A.4.6.2	Final discharge voltage and explanation of safety viewpoint	Cell specified final voltage 2.75V.	P
A.4.6.3	Discharge current and temperature range		P
A.4.6.4	Scope of application of the discharging current		P
A.5	Sample preparation		P
A.5.1	General		P
A.5.2	Insertion procedure for nickel particle to generate internal short		P
A.5.3	Disassembly of charged cell		P
A.5.4	Shape of nickel particle		P
A.5.5	Insertion of nickel particle in cylindrical cell		P
A.5.5.1	Insertion of nickel particle in winding core		P
A.5.5.2	Marking the position of the nickel particle on both ends of the winding core of the separator		P
A.5.6	Insertion of nickel particle in prismatic cell		N/A
A.6	Experimental procedure of the forced internal short-circuit test		P
A.6.1	Material and tools for preparation of nickel particle		P
A.6.2	Example of a nickel particle preparation procedure		P
A.6.3	Positioning (or placement) of a nickel particle		P
A.6.4	Damaged separator precaution		P
A.6.5	Caution for rewinding separator and electrode		P
A.6.6	Insulation film for preventing short-circuit		P
A.6.7	Caution when disassembling a cell		P
A.6.8	Protective equipment for safety		P
A.6.9	Caution in the case of fire during disassembling		P
A.6.10	Caution for the disassembling process and pressing the electrode core		P
A.6.11	Recommended specifications for the pressing device		P

IEC 62133-2			
Clause	Requirement + Test	Result - Remark	Verdict
ANNEX B	RECOMMENDATIONS TO EQUIPMENT MANUFACTURERS AND BATTERY ASSEMBLERS		N/A
ANNEX C	RECOMMENDATIONS TO THE END-USERS		N/A
ANNEX D	MEASUREMENT OF THE INTERNAL AC RESISTANCE FOR COIN CELLS		N/A
D.1	General	Not coin cells.	N/A
D.2	Method		N/A
	A sample size of three coin cells is required for this measurement		N/A
	Coin cells with an internal resistance greater than 3 Ω require no further testing	(See appended table D.2)	N/A
	Coin cells with an internal resistance less than or equal to 3 Ω are subjected to the testing according to Clause 6 and Table 1		N/A
ANNEX E	PACKAGING AND TRANSPORT		P
ANNEX F	COMPONENT STANDARDS REFERENCES		N/A

IEC 62133-2			
Clause	Requirement + Test	Result - Remark	Verdict

TABLE: Critical components information						P
Object / part No.	Manufacturer / trademark	Type / model	Technical data	Standard	Mark(s) of conformity ¹⁾	
Cell	Shandong Xin'an Chuangneng New Energy Co., Ltd.	18650-2500mAh	3.7Vdc, 2500mAh	IEC 62133-2:2017, IEC 62133-2:2017/AMD1:2021	Test with compliance	
Cell	Shandong Xin'an Chuangneng New Energy Co., Ltd.	18650-2200mAh	3.7Vdc, 2200mAh	IEC 62133-2:2017, IEC 62133-2:2017/AMD1:2021	Test with compliance	
Cell	Shandong Xin'an Chuangneng New Energy Co., Ltd.	18650-2000mAh	3.7Vdc, 2000mAh	IEC 62133-2:2017, IEC 62133-2:2017/AMD1:2021	Test with compliance	
Cell	Shandong Xin'an Chuangneng New Energy Co., Ltd.	18650-1800mAh	3.7Vdc, 1800mAh	IEC 62133-2:2017, IEC 62133-2:2017/AMD1:2021	Test with compliance	
Positive electrode	Xinxiang Tianli Lithium Energy Co., Ltd.	TLM510	Li(Ni _{0.5} Co _{0.2} Mn _{0.3})O ₂	--	--	
Negative electrode	HU NAN MING DONG NEW MATERIAL CO., LTD	XACN-1	Carbon	--	--	
Separator	Huizhou Jiuding Energy Technology Co., Ltd.	12+2μm*61.0 mm	PE, Shutdown temperature: 135°C ~ 140°C	--	--	
Electrolyte	Ganzhou Shilei New Energy Technology Co., Ltd	SLNW-D001	EC+DEC+LiPF ₆	--	--	
Supplementary information:						
1) Provided evidence ensures the agreed level of compliance. See OD-CB2039.						

IEC 62133-2			
Clause	Requirement + Test	Result - Remark	Verdict

7.2.1	TABLE: Continuous charging at constant voltage (cells)				P
Sample no.	Recommended charging voltage Vc (Vdc)	Recommended charging current I _{rec} (A)	OCV before test (Vdc)	Results	
C1	4.2	1.25	4.189	P	
C2	4.2	1.25	4.190	P	
C3	4.2	1.25	4.189	P	
C4	4.2	1.25	4.189	P	
C5	4.2	1.25	4.189	P	
Supplementary information:					
<ul style="list-style-type: none"> - No fire or explosion - No leakage - For model: 18650-2500mAh 					

7.2.1	TABLE: Continuous charging at constant voltage (cells)				P
Sample no.	Recommended charging voltage Vc (Vdc)	Recommended charging current I _{rec} (A)	OCV before test (Vdc)	Results	
C1	4.2	1	4.189	P	
C2	4.2	1	4.189	P	
C3	4.2	1	4.190	P	
C4	4.2	1	4.189	P	
C5	4.2	1	4.188	P	
Supplementary information:					
<ul style="list-style-type: none"> - No fire or explosion - No leakage - For model: 18650-2000mAh 					

7.2.1	TABLE: Continuous charging at constant voltage (cells)				P
Sample no.	Recommended charging voltage Vc (Vdc)	Recommended charging current I _{rec} (A)	OCV before test (Vdc)	Results	
C1	4.2	0.9	4.185	P	
C2	4.2	0.9	4.185	P	
C3	4.2	0.9	4.185	P	
C4	4.2	0.9	4.184	P	
C5	4.2	0.9	4.185	P	
Supplementary information:					
<ul style="list-style-type: none"> - No fire or explosion - No leakage - For model: 18650-1800mAh 					

IEC 62133-2			
Clause	Requirement + Test	Result - Remark	Verdict

7.3.1	TABLE: External short-circuit (cell)					P
Sample no.	Ambient T (°C)	OCV before test (Vdc)	Resistance of circuit (mΩ)	Maximum case temperature (°C)	Results	
Samples charged at charging temperature upper limit(45°C)						
C6	55.9	4.187	82	103.3	P	
C7	55.9	4.188	81	100.6	P	
C8	55.9	4.186	86	115.6	P	
C9	55.9	4.182	84	97.1	P	
C10	55.9	4.189	89	102.9	P	
Samples charged at charging temperature lower limit(0°C)						
C11	56.2	4.153	81	104.0	P	
C12	56.2	4.144	83	110.8	P	
C13	56.2	4.158	85	99.4	P	
C14	56.2	4.141	86	100.1	P	
C15	56.2	4.145	82	103.2	P	
Supplementary information:						
- No fire or explosion						
- For model: 18650-2500mAh						

7.3.1	TABLE: External short-circuit (cell)					P
Sample no.	Ambient T (°C)	OCV before test (Vdc)	Resistance of circuit (mΩ)	Maximum case temperature (°C)	Results	
Samples charged at charging temperature upper limit(45°C)						
C6	56.0	4.178	81	106.0	P	
C7	56.0	4.184	85	106.9	P	
C8	56.0	4.188	87	114.1	P	
C9	56.0	4.181	83	103.2	P	
C10	56.0	4.178	86	100.8	P	
Samples charged at charging temperature lower limit(0°C)						
C11	55.7	4.152	84	117.5	P	
C12	55.7	4.153	88	115.3	P	
C13	55.7	4.158	82	118.9	P	
C14	55.7	4.153	89	104.0	P	
C15	55.7	4.154	80	103.8	P	

IEC 62133-2			
Clause	Requirement + Test	Result - Remark	Verdict

Supplementary information:

- No fire or explosion
- For model: 18650-2000mAh

7.3.1	TABLE: External short-circuit (cell)					P
Sample no.	Ambient T (°C)	OCV before test (Vdc)	Resistance of circuit (mΩ)	Maximum case temperature (°C)	Results	
Samples charged at charging temperature upper limit(45°C)						
C6	55.3	4.187	83	122.9	P	
C7	55.3	4.185	87	126.5	P	
C8	55.3	4.186	84	123.9	P	
C9	55.3	4.185	81	124.9	P	
C10	55.3	4.180	86	122.1	P	
Samples charged at charging temperature lower limit(0°C)						
C11	56.1	4.151	85	110.4	P	
C12	56.1	4.162	88	114.7	P	
C13	56.1	4.157	82	126.4	P	
C14	56.1	4.148	87	120.3	P	
C15	56.1	4.152	83	115.8	P	
Supplementary information:						
- No fire or explosion						
- For model: 18650-1800mAh						

7.3.2	TABLE: External short-circuit (battery)					N/A
Sample no.	Ambient T (°C)	OCV before test (Vdc)	Resistance of circuit (mΩ)	Maximum case temperature (°C)	Component single fault condition	Results
Supplementary information:						

IEC 62133-2			
Clause	Requirement + Test	Result - Remark	Verdict

7.3.5	TABLE: Crush (cells)			P
Sample no.	OCV before test (Vdc)	OCV at removal of crushing force (Vdc)	Maximum force applied to the cell during crush (kN)	Results
Samples charged at charging temperature upper limit(45°C)				
C29	4.185	4.185	13.05	P
C30	4.183	4.183	13.01	P
C31	4.181	4.181	13.02	P
C32	4.188	4.188	13.04	P
C33	4.180	4.180	13.02	P
Samples charged at charging temperature lower limit(0°C)				
C34	4.139	4.139	13.04	P
C35	4.144	4.144	13.05	P
C36	4.140	4.140	13.01	P
C37	4.143	4.143	13.02	P
C38	4.148	4.148	13.03	P
Supplementary information:				
- No fire or explosion				
- For model: 18650-2500mAh				

7.3.5	TABLE: Crush (cells)			P
Sample no.	OCV before test (Vdc)	OCV at removal of crushing force (Vdc)	Maximum force applied to the cell during crush (kN)	Results
Samples charged at charging temperature upper limit(45°C)				
C29	4.187	4.187	13.04	P
C30	4.179	4.179	13.03	P
C31	4.188	4.188	13.05	P
C32	4.184	4.184	13.04	P
C33	4.185	4.185	13.02	P
Samples charged at charging temperature lower limit(0°C)				
C34	4.151	4.151	13.06	P
C35	4.152	4.152	13.05	P
C36	4.155	4.155	13.03	P
C37	4.153	4.153	13.01	P
C38	4.154	4.154	13.04	P

IEC 62133-2			
Clause	Requirement + Test	Result - Remark	Verdict

Supplementary information:

- No fire or explosion
- For model: 18650-2000mAh

7.3.5	TABLE: Crush (cells)				P
Sample no.	OCV before test (Vdc)	OCV at removal of crushing force (Vdc)	Maximum force applied to the cell during crush (kN)	Results	
Samples charged at charging temperature upper limit(45°C)					
C29	4.177	4.177	13.06	P	
C30	4.181	4.181	13.02	P	
C31	4.188	4.188	13.01	P	
C32	4.182	4.182	13.04	P	
C33	4.175	4.175	13.03	P	
Samples charged at charging temperature lower limit(0°C)					
C34	4.152	4.152	13.05	P	
C35	4.156	4.156	13.07	P	
C36	4.149	4.149	13.09	P	
C37	4.150	4.150	13.02	P	
C38	4.151	4.151	13.04	P	
Supplementary information:					
- No fire or explosion					
- For model: 18650-1800mAh					

7.3.6	TABLE: Over-charging of battery				N/A
Constant charging current (A)				—	
Supply voltage (Vdc)				—	
Sample no.	OCV before charging (Vdc)	Total charging time (minute)	Maximum outer case temperature (°C)	Results	
Supplementary information:					

IEC 62133-2			
Clause	Requirement + Test	Result - Remark	Verdict

7.3.7	TABLE: Forced discharge (cells)				P
Sample no.	OCV before application of reverse charge (Vdc)	Measured reverse charge I_t (A)	Lower limit discharge voltage (Vdc)	Results	
C39	3.436	2.5	2.75	P	
C40	3.437	2.5	2.75	P	
C41	3.436	2.5	2.75	P	
C42	3.435	2.5	2.75	P	
C43	3.438	2.5	2.75	P	
Supplementary information:					
- No fire or explosion					
- For model: 18650-2500mAh					

7.3.7	TABLE: Forced discharge (cells)				P
Sample no.	OCV before application of reverse charge (Vdc)	Measured reverse charge I_t (A)	Lower limit discharge voltage (Vdc)	Results	
C39	3.165	2	2.75	P	
C40	3.191	2	2.75	P	
C41	3.193	2	2.75	P	
C42	3.184	2	2.75	P	
C43	3.173	2	2.75	P	
Supplementary information:					
- No fire or explosion					
- For model: 18650-2000mAh					

7.3.7	TABLE: Forced discharge (cells)				P
Sample no.	OCV before application of reverse charge (Vdc)	Measured reverse charge I_t (A)	Lower limit discharge voltage (Vdc)	Results	
C39	3.259	1.8	2.75	P	
C40	3.249	1.8	2.75	P	
C41	3.250	1.8	2.75	P	
C42	3.269	1.8	2.75	P	
C43	3.258	1.8	2.75	P	
Supplementary information:					
- No fire or explosion					
- For model: 18650-1800mAh					

IEC 62133-2			
Clause	Requirement + Test	Result - Remark	Verdict

7.3.8.1	TABLE: Vibration					N/A
Sample no.	OCV before test (Vdc)	OCV after test (Vdc)	Mass before test (g)	Mass after test (g)	Results	
Supplementary information:						

7.3.8.2	TABLE: Mechanical shock					N/A
Sample no.	OCV before test (Vdc)	OCV after test (Vdc)	Mass before test (g)	Mass after test (g)	Results	
Supplementary information:						

7.3.9	TABLE: Forced internal short circuit (cells)					P
Sample no.	Chamber ambient T (°C)	OCV before test (Vdc)	Particle location ¹⁾	Maximum applied pressure (N)	Results	
Samples charged at charging temperature upper limit(45°C)						
C44	45	4.185	1	800	P	
C45	45	4.188	1	800	P	
C46	45	4.182	1	800	P	
C47	45	4.189	1	800	P	
C48	45	4.186	1	800	P	
Samples charged at charging temperature lower limit(0°C)						
C49	0	4.167	1	800	P	
C50	0	4.164	1	800	P	
C51	0	4.159	1	800	P	
C52	0	4.154	1	800	P	
C53	0	4.163	1	800	P	

Supplementary information:

¹⁾ Identify one of the following:

1: Nickel particle inserted between positive and negative (active material) coated area.

2: Nickel particle inserted between positive aluminium foil and negative active material coated area.

- No fire or explosion

- Others (please explain)

- For model: 18650-2500mAh

IEC 62133-2			
Clause	Requirement + Test	Result - Remark	Verdict

7.3.9	TABLE: Forced internal short circuit (cells)					P
Sample no.	Chamber ambient T (°C)	OCV before test (Vdc)	Particle location ¹⁾	Maximum applied pressure (N)	Results	
Samples charged at charging temperature upper limit(45°C)						
C44	45	4.179	1	800	P	
C45	45	4.177	1	800	P	
C46	45	4.174	1	800	P	
C47	45	4.175	1	800	P	
C48	45	4.185	1	800	P	
Samples charged at charging temperature lower limit(0°C)						
C49	0	4.151	1	800	P	
C50	0	4.150	1	800	P	
C51	0	4.152	1	800	P	
C52	0	4.149	1	800	P	
C53	0	4.153	1	800	P	
Supplementary information:						
¹⁾ Identify one of the following: 1: Nickel particle inserted between positive and negative (active material) coated area. 2: Nickel particle inserted between positive aluminium foil and negative active material coated area. - No fire or explosion - Others (please explain) - For model: 18650-2000mAh						

IEC 62133-2			
Clause	Requirement + Test	Result - Remark	Verdict

7.3.9	TABLE: Forced internal short circuit (cells)					P
Sample no.	Chamber ambient T (°C)	OCV before test (Vdc)	Particle location ¹⁾	Maximum applied pressure (N)	Results	
Samples charged at charging temperature upper limit(45°C)						
C44	45	4.189	1	800	P	
C45	45	4.187	1	800	P	
C46	45	4.182	1	800	P	
C47	45	4.181	1	800	P	
C48	45	4.178	1	800	P	
Samples charged at charging temperature lower limit(0°C)						
C49	0	4.150	1	800	P	
C50	0	4.151	1	800	P	
C51	0	4.147	1	800	P	
C52	0	4.157	1	800	P	
C53	0	4.153	1	800	P	
Supplementary information:						
¹⁾ Identify one of the following: 1: Nickel particle inserted between positive and negative (active material) coated area. 2: Nickel particle inserted between positive aluminium foil and negative active material coated area. - No fire or explosion - Others (please explain) - For model: 18650-1800mAh						

D.2	TABLE: Internal AC resistance for coin cells				N/A
Sample no.	Ambient T (°C)	Store time (h)	Resistance Rac (Ω)	Results ¹⁾	
Supplementary information:					

ATTACHMENT to IEC62133_2C			
Clause	Requirement + Test	Result - Remark	Verdict
ATTACHMENT TO TEST REPORT IEC 62133-2 (REPUBLIC OF KOREA) NATIONAL DIFFERENCES (SECONDARY CELLS AND BATTERIES CONTAINING ALKALINE OR OTHER NON-ACID ELECTROLYTES - SAFETY REQUIREMENTS FOR PORTABLE SEALED SECONDARY LITHIUM CELLS, AND FOR BATTERIES MADE FROM THEM, FOR USE IN PORTABLE APPLICATIONS - PART 2: LITHIUM SYSTEMS)			
Differences according to.....: National standard KC62133-2(2020-07)			
TRF template used:.....: IECEE OD-2020-F3:2022, Ed. 1.2			
Attachment Form No.....: KR_ND_IEC62133_2C			
Attachment Originator.....: KTR			
Master Attachment.....: 2023-08-02			
Copyright © 2022 IEC System for Conformity Testing and Certification of Electrical Equipment (IECEE), Geneva, Switzerland. All rights reserved.			
	National Differences		N/A
7.3.6	Over-charging of battery		N/A
(Revision)	<i>[Add the bolded text]</i> b) Test The test shall be carried out in an ambient temperature of 20 °C ± 5 °C. Each test battery shall be discharged at a constant current of 0,2 It A, to a final discharge voltage specified by the manufacturer. Sample batteries shall then be charged at a constant current of 2,0 It A, using a supply voltage which is: <ul style="list-style-type: none"> • 1,4 times the upper limit charging voltage presented in Table A.1 (but not to exceed 6,0 V) for single cell/cell block batteries or • 1,2 times the upper limit charging voltage presented in Table A.1 per cell for series connected multi-cell batteries, and • sufficient to maintain a current of 2,0 It A throughout the duration of the test or until the supply voltage is reached. <u>• In case the charging voltage specified by the manufacturer is higher than the overcharge test voltage, the maximum charging voltage specified by manufacturer should be applied with 2.0 ItA,</u> <u>(e.g., quick charging power bank, etc.)</u>		N/A

ATTACHMENT to IEC62133_2C			
Clause	Requirement + Test	Result - Remark	Verdict
	<p>[Replace to the following statement]</p> <p>c) Acceptance criteria</p> <p>Filling beyond the manufacturer's specified limits should not result in ignition or explosion</p>		N/A
Annex G	Definition for shape and materials of outer case for cell		—
(Addition)	<p>G.1 General</p> <p>Annex G provides definitions for shape and materials of outer case for cell</p> <p>G.2 Shape of outer case for cell</p> <p>G 2.1 Cylindrical cell</p> <p>Cell with a cylindrical shape in which the overall height is equal to or greater than diameter.</p> <p>G 2.2 Prismatic cell</p> <p>Cell having the shape of a parallelepiped whose faces are rectangular</p> <p>G.3 Materials of outer case for cell</p> <p>G.3.1 Soft case</p> <p>Non-metallic outer case or container for cell</p> <p>G.3.2 Hard case</p> <p>Metallic outer case or container for cell.</p>	<p>(Shape of outer cases)</p> <p><input checked="" type="checkbox"/> Cylindrical</p> <p><input type="checkbox"/> Prismatic</p> <p>(Materials of outer cases)</p> <p><input checked="" type="checkbox"/> Hard</p> <p><input type="checkbox"/> Soft</p>	—
Annex H	Calculation method of the volumetric energy density for cell		—
(Addition)	<p>Annex H provide a calculation method of the volumetric energy density for cell in use of smart phone, tablet, notebook.</p> <p>H.1 General</p> <p>Unless otherwise stated in the Annex E, the dimensions for calculation are based on these for cell before shipment and the volumetric energy density shall be calculated with a maximum values specified by manufacturer. If the specification for cell can't be provided a dimension for calculation, the manufacturer's other documentation shall be provided to demonstrate compliance for its calculation.</p>	<p>18650-2500mAh: 533.5Wh / L</p> <p>18650-2200mAh: 469.5Wh / L</p> <p>18650-2000mAh: 426.8Wh / L</p> <p>18650-1800mAh: 384.2Wh / L</p>	—

ATTACHMENT to IEC62133_2C			
Clause	Requirement + Test	Result - Remark	Verdict
	<p>H.2 Calculation Method</p> <p>L : Length (max.) of cell (including terrace) W : Width (max.) of cell T : Thickness (max.) when shipping charge (For reference, Please Exclude the dimension of any tape that Is attached to cell)</p> $\text{Volumetric energy density (Wh/L)} = \frac{\text{Nominal voltage (V)} \times \text{Rated capacity (Ah)}}{\text{Length (L)} \times \text{Width (W)} \times \text{Thickness (T)}}$ <p>[H.1 – Prismatic cell using soft case]</p> <p>L : Length (max.) of cell W : Width (max.) of cell T : Thickness when shipping charge (For reference, Please Exclude the dimension of any tape that Is attached to cell)</p> $\text{Volumetric energy density (Wh/L)} = \frac{\text{Nominal voltage (V)} \times \text{Rated capacity (Ah)}}{\text{Length (L)} \times \text{Width (W)} \times \text{Thickness (T)}}$ <p>[H.2 – Prismatic cell using hard case]</p> <p>D : Diameter (max.) of cell L : Length (max.) of cell (According to shape of cell at shipping, The dimension of tube for cell may be included In overall dimension of cell)</p> $\text{Volumetric energy density (Wh/L)} = \frac{\text{Nominal voltage (V)} \times \text{Rated capacity (Ah)}}{3.14159 \times \frac{\text{Diameter (D)}^2}{4} \times \text{Length(L)}}$ <p>[H.3 – Cylindrical cell using hard case]</p>		

Photo document

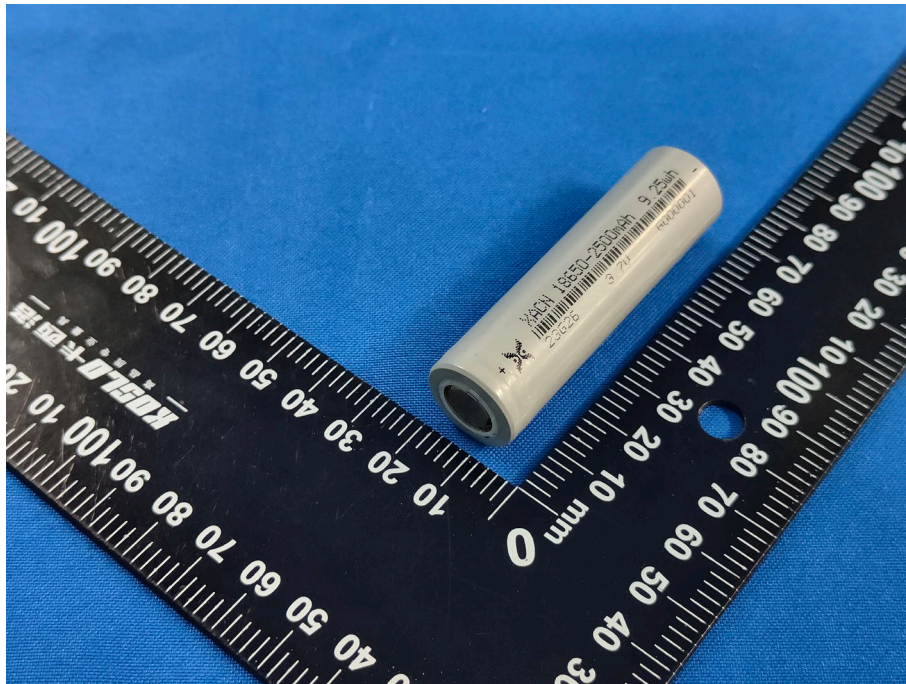


Fig.1 - Cell view (model: 18650-2500mAh)

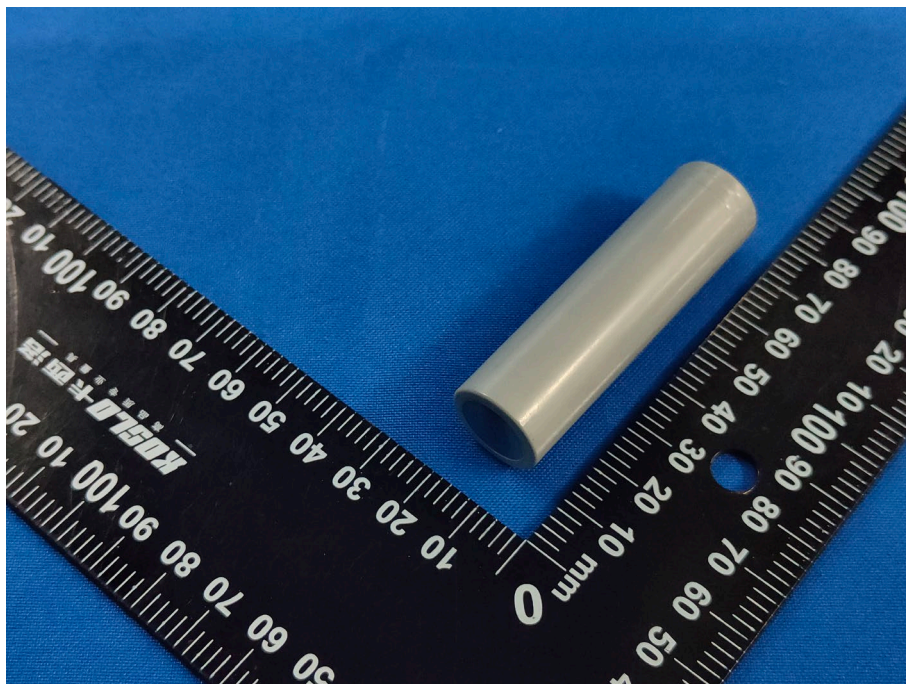


Fig.2 - Cell view(another side) (model: 18650-2500mAh)

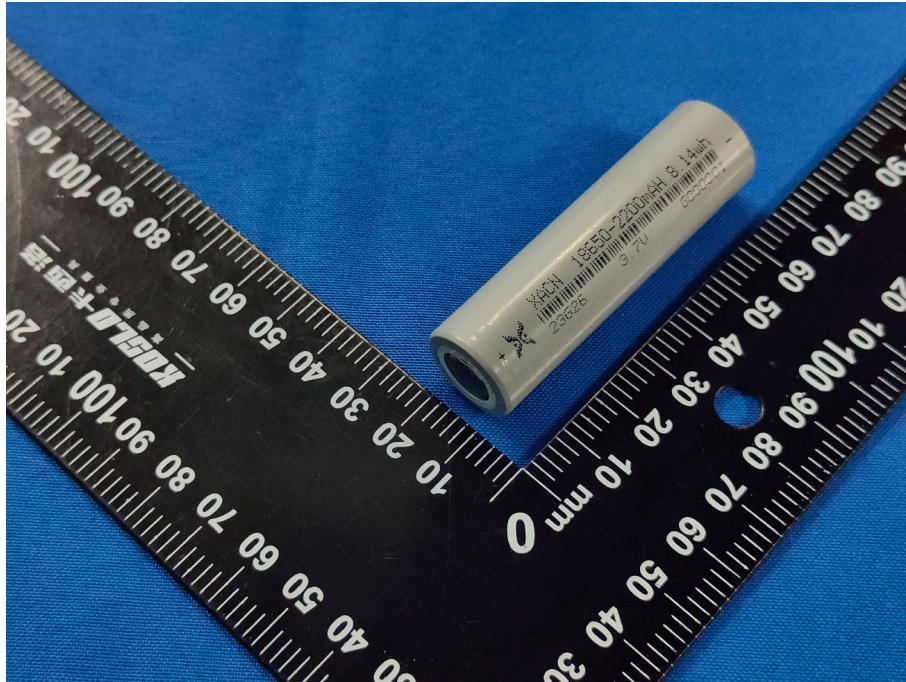


Fig.3 - Cell view (model: 18650-2200mAh)

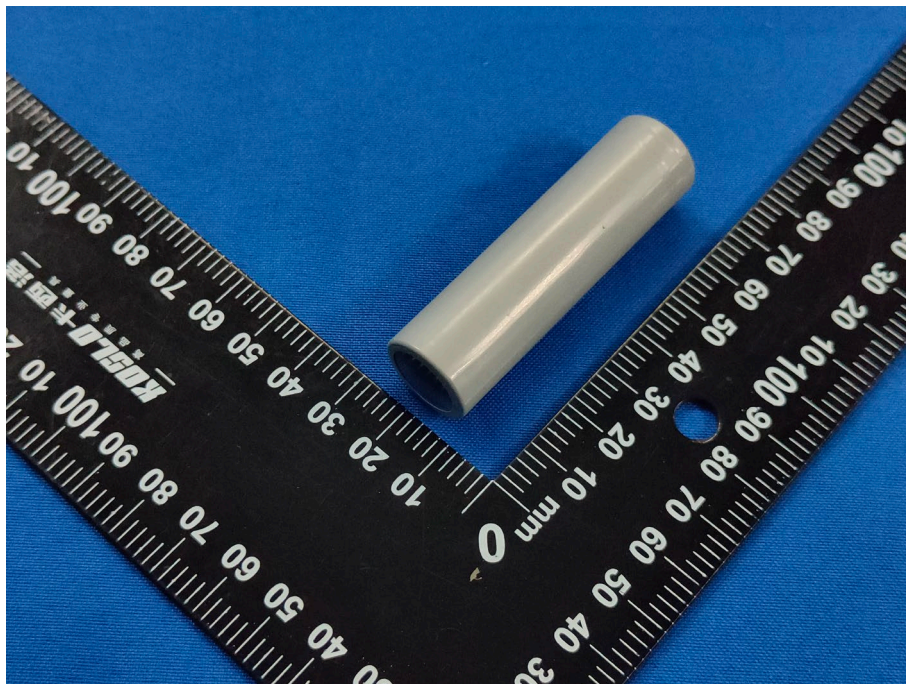


Fig.4 - Cell view(another side) (model: 18650-2200mAh)



Fig.5 - Cell view (model: 18650-2000mAh)

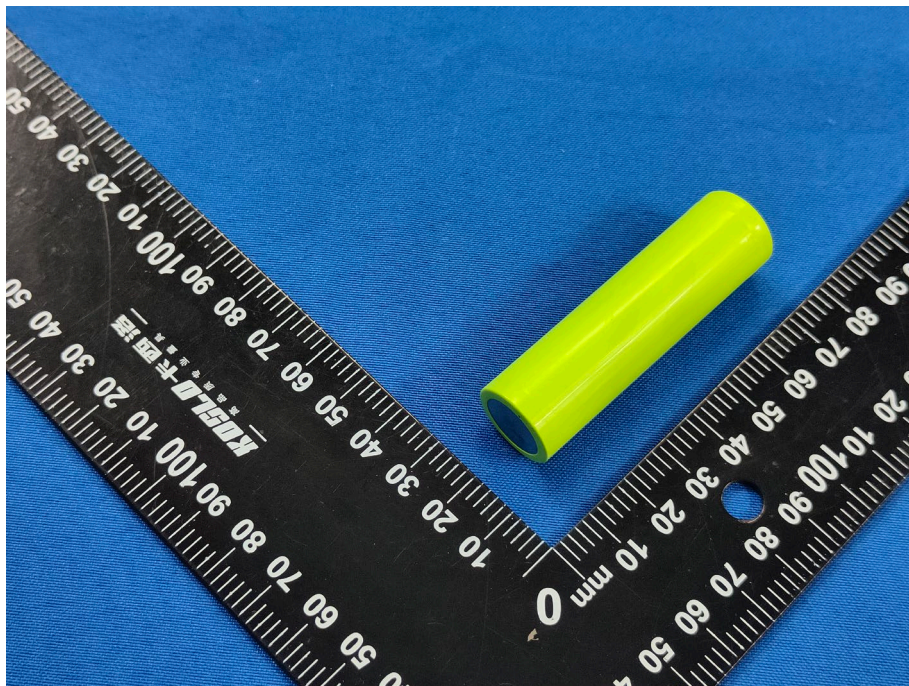


Fig.6 - Cell view(another side) (model: 18650-2000mAh)

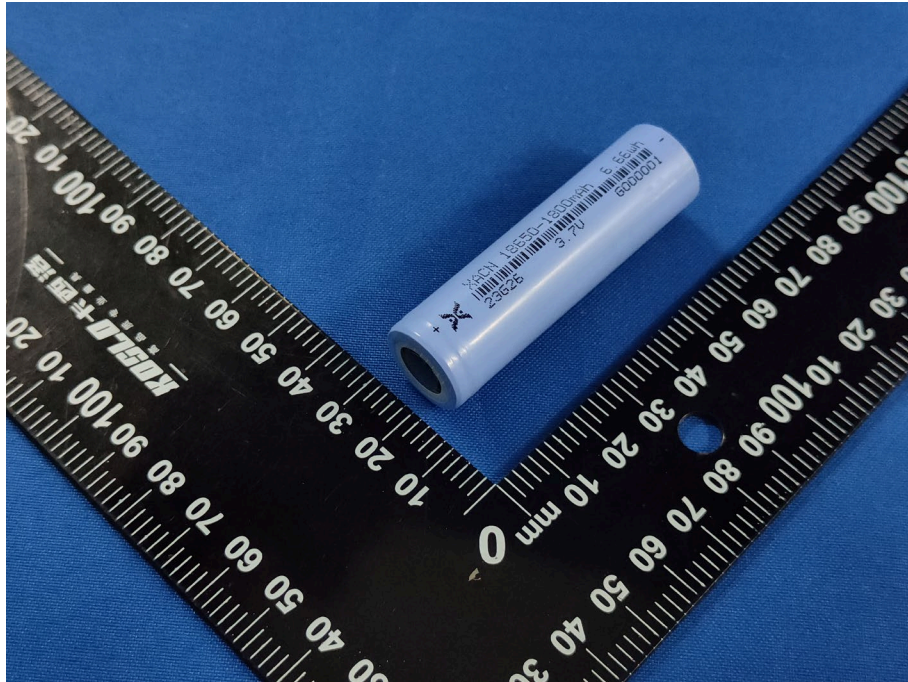


Fig.5 - Cell view (model: 18650-1800mAh)

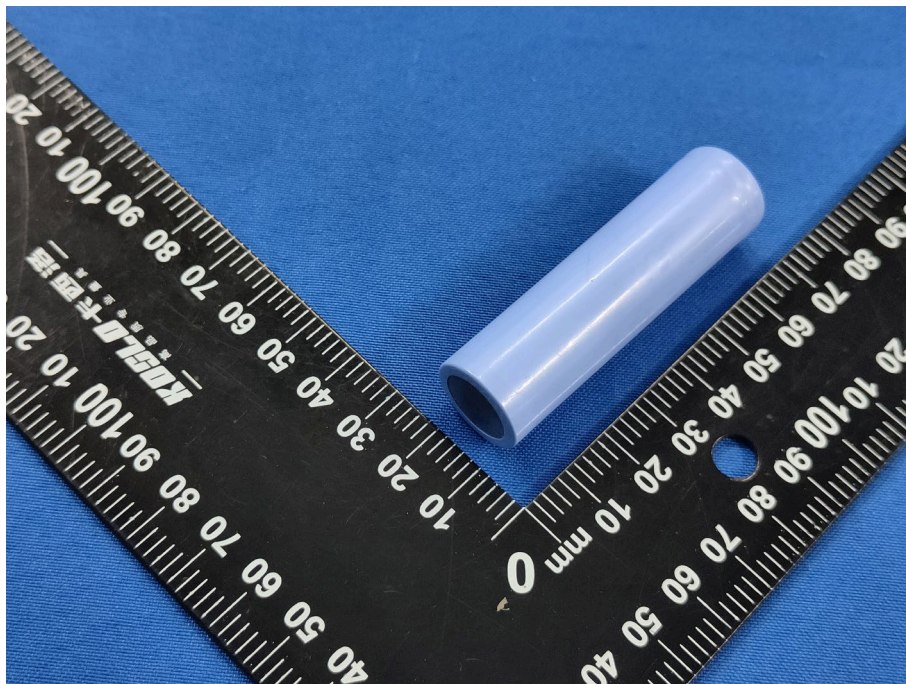


Fig.6 - Cell view(another side) (model: 18650-1800mAh)