

285X108mm

使用说明书

感谢您订购便携充气泵，让充气变得更简单方便。本产品用于汽车、摩托车、自行车、电动车及球类、小型充气玩具等充气也可当做胎压计和手电筒使用。

1. 预设胎压，充满即停，自动操作
2. 全新升级款充气核心
3. 夜间工作灯，保障夜间充气安全

使用说明

- 将气管一端与气泵连接在一起，另一端则安装至汽车轮胎的气嘴上。
- 液晶显示的智能控制型气泵，需先长按开关激活电源和液晶屏设定气压，60秒自动关机。
- 点按“C”键，可进行汽车、电瓶车、自行车、球类四个充气类型选择。长按可进行PSI、BAR、KPA、kg/cm²四个气压单位选择。
- “+”与“-”为压力预设键，设定到合适的压力值。闪烁3秒自动设定完成，再按气泵电源开关开始充气。
- 充气达到设定值，智能控制型气泵会自动停止充气。
- 普通轿车轮胎胎压为2.3-2.5BAR、28-35PSI、2-2.5KG/cm²、230-250KPA
- 充气完毕，注意气管的温度冷却后将气管一端从气门芯上迅速旋出，另一从主机上旋出。气泵的充电时间为3-5小时。
- 有线款先将电源线插入汽车点烟器中，设置步骤同上。

提示：说明书中产品、配件、用户界面等插图均为示意图，仅供参考由于产品的更新与升级，产品实物与示意图可能有差异，请以实物为准。

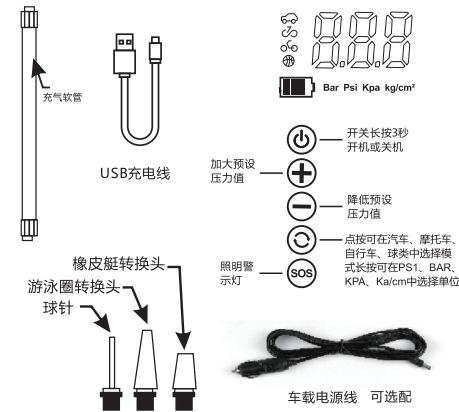
警告

1. 雷雨天气请断开外接充电器，以免遭雷击破坏。
2. 远离热源，保持通风。
3. 禁止将设备放在高温下或丢入火中以免引起爆炸。
4. 在储存、运输和运行环境中，请注意防水。

使用前请认真阅读使用说明，并严格遵守所有说明。另外，请妥善保管本手册以备将来参考。

锂电池充电

- 将USB充电器插入USB嘴然后连接到气泵上的USB充电器端口。
- 当气泵上“C”闪烁时，电池正在充电。电池充满的时候显示常亮。
- 需要3-5小时到完全充电状态。



基本参数

产品名称	便携式电动充气泵
执行标准	Q/BN002-2023
充气压力范围	0.2~10.3bar/3~150psi
工作温度	0°C~45°C
存储温度	-10°C~45°C
气管尺寸	气管拔出长度150mm,包含气嘴(不含螺纹)
气嘴尺寸	美式气嘴11x20mm; 法式气嘴11x15mm
工作噪音	距离1米噪音低于100dB
输入参数	7.4V, 12Vm, 2A
充电接口	Typ-C-车点烟器电源接口
传感器精度	±2psi

注意事项

1. 禁止儿童使用本气泵!放置在儿童接触不到的安全地方!千万不要把气管插入人或动物的嘴巴、耳朵或眼睛里充气，不要把气泵当做玩具!
2. 禁止在靠近易燃易爆液体和气体的场合(如加油站)使用本气泵!
3. 充气进行时高压气体会产生热量,为确保气泵良好工作,每次使用10分钟后,必须让本机停止运行15分钟,使机器冷却后再使用,以延长寿命。
4. 如在充气时由异响或温度过高时,请立即关机,并使其冷却至少15分钟,拆卸气管时小心烫手。
5. 产品防雨淋水侵,防撞打撞击。
6. 如果长期不使用本气泵,则必须保存在干燥的地方。若长时间储存,建议每半年充一次电。

正面

Product Manual

Thank you for ordering wireless intelligent portable air pump, making inflating easier and more convenient. This product can be used for inflating cars, motorcycles, bicycles, electric cars and balls small inflatable toys, etc.. and can also be used as tire pressure meter and flashlight.

1. Preset tire pressure, full stop, automatic operation
2. Inflatable core upgrade
3. Working light at night, ensuring the safety of charging at night

Instructions

1. One end of the trachea is connected with the air pump, and the other end is screwed into the valve core of the tire. For French valve cores, they should be connected charging nozzle.
2. The liquid crystal display intelligent control air pump needs to press the "C" key to activate the power supply and the LCD screen to set the air pressure. Inflate by charging switch.
3. Cycle "C" key, can be in PSI, BAR, between the pressure unit conversion, the screen displays the actual air pressure.
4. "+" and "-" are the preset keys of pressure. the point is slow, the long press is fast and the appropriate pressure value is set, lashing for 5 seconds, automatically set and the press "C" air pump start switch to start inflating.
5. When the inflation reaches the set value, the intelligent control air pump will automatically stop the inflation.
6. SOS emergency rescue and LDE press the "SOS" switch.
7. After inflation, one end of the trachea is rapidly rotating out of the valve core and the other end is turned out from the main engine.
8. The charging time of the air pump is about 3-5 hours.

Battery charging:

- insert the USB charger into the USB port and connect it to the USB charger port on the air pump.
- When "C" flashes on the air pump, the battery is being charged.
- It takes 3-5 hours to fully charge.

Reminder: The illustrations of products, accessories, user interface etc. in the manual are schematic diagrams and are for reference only. Due to the update and upgrade of the product, the actual product may be slightly different from the schematic diagram, please refer to the actual product.

Warning

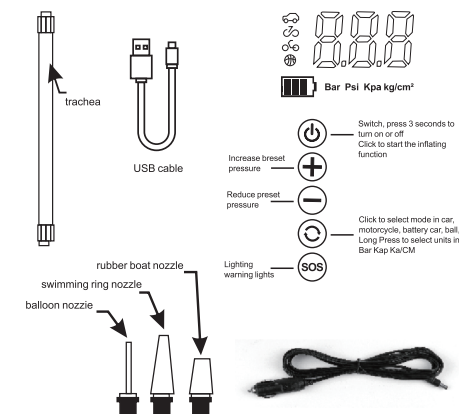
1. Please disconnect the charger to avoid lightning damage in thunderstorm.
2. Keep away from heat. Keep ventilation.
3. Forbidden equipment at high temperatures or into fire, lest cause explosion.
4. Please pay attention to waterproof in.

WIRELESS PORTABLE AIR PUMP

Please read the instructions carefully before use and follow them strictly. In addition, please keep this manual for future reference.

Battery charging:

- Insert the USB charger into the USB port and connect it to the USB charger port on the air pump.
- When "C" flashes on the air pump, the battery is being charged.
- It takes 3-5 hours to fully charge.



Basic parameters

Product name	Portable Electric Air Pump
Executive standard	Q/BNX002-2019
Inflation pressure range	0.2~10.3bar/3~150psi
Working temperature	0°C~45°C
Storage temp	-10°C~45°C
Trachea size	Tracheal extraction Length 150mm, Including valve (without thread)
Valve size	American style valve 11x20mm; French valve 11x15mm
Working noise	Noise less than 100dB from 1 meter
Input parameters	7.4V, 12Vm, 2A
Charging interface	Typ-C-car cigarette lighter power interface
Sensor accuracy	±2psi

Attention

1. Forbid children to use this pump. Put the pump in the safe place where they can't touch it. Don't insert the hose to the mouth, ears and eyes, don't regard it as a toy.
2. Forbid using the pump where close to flammable and combustible, such as gas station.
3. Operation generate heat, when pump use uninterruptedly 10 minutes please let the pump stop at least 15 minutes.
4. If operation generate abnormal sound or temperature too high, please stop it at least 15 minutes, Caution Hot when you tidy the hose.
5. Don't put the pump where there is water or rainy, don't strike it.
6. If you don't use the pump for a long time, please store it in where is dry. Suggest charge it once half year.

反面