



FCC Part 15 Subpart B Test Report

FCC PART 15 Subpart B Class B

Report Reference No.....: WUX202107193587F

Compiled by
 (position+printed name+signature)..: File administrators Bailey Luo

Name of the organization performing the tests
 Test Engineer Alison Liu
 (position+printed name+signature)..:

Approved by
 (position+printed name+signature)..: Manager Tony Bi

Date of issue.....: July 23, 2021



Representative Laboratory Name.....: Shenzhen Wuxiang Testing (Group) Co., Ltd.
 Address.....: Building B, Xinbaosheng, No.233, Xixiang Street, Bao'an District, Shenzhen, China

Applicant's name.....: Yuyao Acceleration Auto Accessories Co., Ltd.
 Address.....: No. 8 Maosheng Road, Economic Development Zone, Yuyao City, Zhejiang Province

Importer : /

Address : /

Test specification:

Standard.....: FCC PART 15 Subpart B Class B
 TRF Originator.....: Shenzhen Wuxiang Testing (Group) Co., Ltd.
 Master TRF.....: Dated 2014-08

Shenzhen Wuxiang Testing (Group) Co., Ltd. This publication may be reproduced in whole or in part for non-commercial purposes as long as the Shenzhen Wuxiang Testing (Group) Co., Ltd. is acknowledged as copyright owner and source of the material. Shenzhen Wuxiang Testing (Group) Co., Ltd. takes no responsibility for and will not assume liability for damages resulting from the reader's interpretation of the reproduced material due to its placement and context.

Test item description.....: Car air pump
 Trade Mark.....: /
 Model/Type reference.....: 8003
 Listed Models: 8001,8001,8002,8004,8005,8006,8007,8008,8009,8010,8011, 8012,8013,8014,8015,8016,8017,8018,8019,8020
 Power Supply.....: Input: DC 12V,120W
 Result.....: **Positive**

FCC Test Report

Test Report No. :	WUX202107193587F	July 23, 2021
		Date of issue

Equipment under Test : Car air pump

Model /Type : 8003

Listed Models : 8001,8002,8004,8005,8006,8007,8008,8009,8010,8011,
8012,8013,8014,8015,8016,8017,8018,8019,8020

Applicant : Yuyao Acceleration Auto Accessories Co., Ltd.

Address : No. 8 Maosheng Road, Economic Development Zone, Yuyao City, Zhejiang Province

Manufacturer : Yuyao Acceleration Auto Accessories Co., Ltd.

Address : No. 8 Maosheng Road, Economic Development Zone, Yuyao City, Zhejiang Province

Importer : /

Address : /

Test Result according to the standards on page 4:	Positive
--	-----------------

The test report merely corresponds to the test sample.

It is not permitted to copy extracts of these test result without the written permission of the test laboratory.

Content

- 1. TEST STANDARDS 4**
- 2. SUMMARY 5**
 - 2.1. General Remarks..... 5
 - 2.2. Equipment Under Test..... 5
 - 2.3. Short description of the Equipment under Test (EUT)..... 5
 - 2.4. EUT operation mode..... 5
 - 2.5. EUT configuration..... 5
 - 2.6. Related Submittal(s) / Grant (s)..... 6
 - 2.7. Modifications..... 6
 - 2.8. Test Result Summary..... 6
- 3. TEST ENVIRONMENT 7**
 - 3.1. Address of the test laboratory..... 7
 - 3.2. Test Facility..... 7
 - 3.3. Environmental conditions..... 7
 - 3.4. Statement of the measurement uncertainty..... 7
 - 3.5. Equipments Used during the Test..... 8
- 4. TEST CONDITIONS AND RESULTS 9**
 - 4.1. Radiated Emission Test..... 9
 - 4.2. Conducted Emissions Test..... 13
- 5. PHOTOS OF THE EUT 14**

1. TEST STANDARDS

The tests were performed according to following standards:

[FCC Rules Part 15 Subpart B - Unintentional Radiators](#)

[ANSI C63.4-2003](#)

2. SUMMARY

2.1. General Remarks

Date of receipt of test sample : July 19, 2021

Testing commenced on : July 20, 2021

Testing concluded on : July 23, 2021

2.2. Equipment Under Test

Power supply system utilised

Power supply voltage : 100V / 60 Hz 240V / 60Hz
 12 V DC 24 V DC
 Other (specified in blank below)

/

2.3. Short description of the Equipment under Test (EUT)

Car air pump Insert: Usage of Machine, Place it will be used, Functions For more details, refer to the user's manual of the EUT.

Serial number: 8003

2.4. EUT operation mode

The EUT has been tested under typical operating condition.

2.5. EUT configuration

The following peripheral devices and interface cables were connected during the measurement:

- - supplied by the manufacturer
- - supplied by the lab

2.6. Related Submittal(s) / Grant (s)

This test report is intended for 8003 filing to comply with the FCC Part 15, Subpart B Rules.

2.7. Modifications

No modifications were implemented to meet testing criteria.

2.8. Test Result Summary

Test Item	Test Requirement	Standard Paragraph	Result
Radiated Emission	FCC PART 15 Subpart B Class B: 2014	Section 15.109	PASS
Conducted Emission	FCC PART 15 Subpart B Class B: 2014	Section 15.107	N/A

3. TEST ENVIRONMENT

3.1. Address of the test laboratory

CCIC Southern Electronic Product Testing (Shenzhen) Co., Ltd
Electronic detection of building, Shahe West Road, Xili Town, Nanshan, Shenzhen, China.

There is one 3m semi-anechoic chamber and two line conducted labs for final test.
The Test Sites meet the requirements in documents ANSI C63.4 and CISPR 22/EN 55022 requirements.

3.2. Test Facility

The test facility is recognized, certified, or accredited by the following organizations:

IC Registration No.: 7631A

The 3m alternate test site of CCIC Southern Electronic Product Testing (Shenzhen) Co., Ltd EMC Laboratory has been registered by Certification and Engineer Bureau of Industry Canada for the performance of with Registration NO.: 7631A on March, 2011.

FCC-Registration No.: 338263

CCIC Southern Electronic Product Testing (Shenzhen) Co., Ltd EMC Laboratory has been registered and fully described in a report filed with the (FCC) Federal Communications Commission. The acceptance letter from the FCC is maintained in our files. Registration 338263, March 24, 2008.

3.3. Environmental conditions

During the measurement the environmental conditions were within the listed ranges:

Temperature:	<u>15-35 ° C</u>
Humidity:	<u>30-60 %</u>
Atmospheric pressure:	<u>950-1050mbar</u>

3.4. Statement of the measurement uncertainty

The data and results referenced in this document are true and accurate. The reader is cautioned that there may be errors within the calibration limits of the equipment and facilities. The measurement uncertainty was calculated for all measurements listed in this test report acc. to CISPR 16 - 4 „Specification for radio disturbance and immunity measuring apparatus and methods – Part 4: Uncertainty in EMC Measurements“ and is documented in the CCIC Southern Electronic Product Testing (Shenzhen) Co., Ltd quality system acc. to DIN EN ISO/IEC 17025. Furthermore, component and process variability of devices similar to that tested may result in additional deviation. The manufacturer has the sole responsibility of continued compliance of the device.

Hereafter the best measurement capability for CCIC laboratory is reported:

Test	Range	Measurement Uncertainty	Notes
Radiated Emission	30~1000MHz	4.10dB	(1)
Radiated Emission	1~12.75GHz	4.32dB	(1)
Conducted Disturbance	0.15~30MHz	3.22dB	(1)

(1) This uncertainty represents an expanded uncertainty expressed at approximately the 95% confidence level using a coverage factor of k=2.

3.5. Equipments Used during the Test

Radiated Emission					
Item	Test Equipment	Manufacturer	Model No.	Serial No.	Last Cal.
1	ULTRA-BROADBAND ANTENNA	Sunol Sciences Corp.	JB1 Antenna	A061713	2021/05
2	EMI TEST RECEIVER	ROHDE & SCHWARZ	ESPI	1164.6407.07	2021/05
3	RF TEST PANEL	ROHDE & SCHWARZ	TS / RSP	335015/ 0017	2021/05
4	Controller	EM Electronics	Controller EM 1000	N/A	2021/05
5	EMI TEST SOFTWARE	ROHDE & SCHWARZ	ESK1	N/A	2021/05

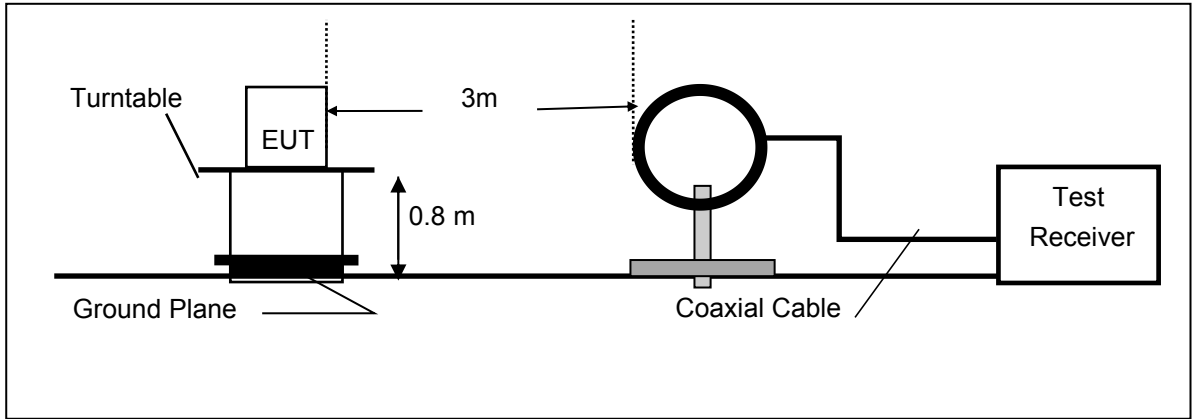
Conducted Emission					
Item	Test Equipment	Manufacturer	Model No.	Serial No.	Last Cal.
1	EMI Test Receiver	ROHDE & SCHWARZ	ESCI	1166.5950.03	2021/05
2	LISN	ROHDE & SCHWARZ	ENV216	101034	2021/05
4	EMI Test Software	ROHDE & SCHWARZ	ESK1	N/A	2021/05

4. TEST CONDITIONS AND RESULTS

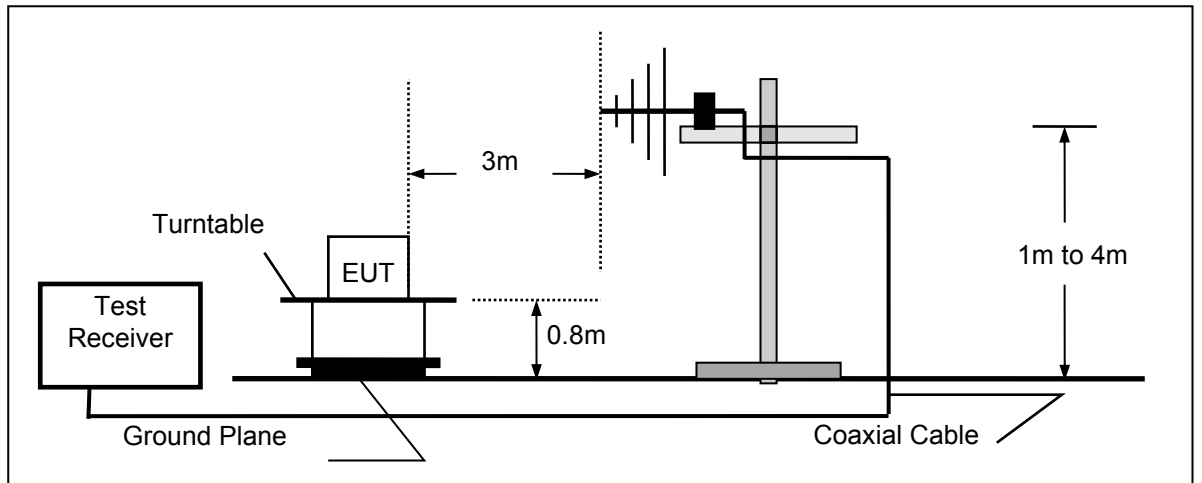
4.1. Radiated Emission Test

TEST CONFIGURATION

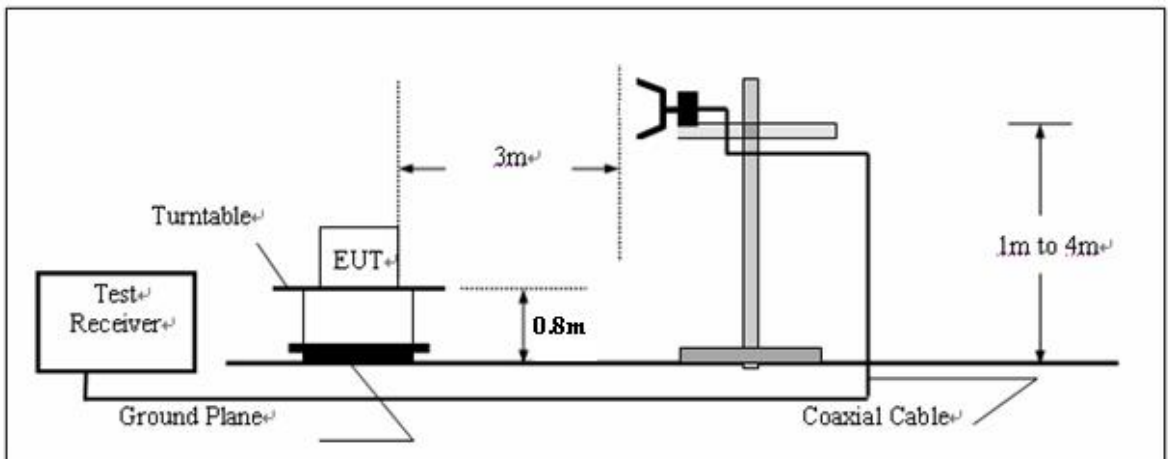
(A) Radiated Emission Test Set-Up, Frequency Below 30MHz



(B) Radiated Emission Test Set-Up, Frequency below 1000MHz



(C) Radiated Emission Test Set-Up, Frequency above 1000MHz



Field Strength Calculation

The field strength is calculated by adding the Antenna Factor and Cable Factor and subtracting the Amplifier Gain and Duty Cycle Correction Factor(if any) from the measured reading. The basic equation with a sample calculation is as follows:

$$FS = RA + AF + CL - AG$$

Where FS = Field Strength	CL = Cable Attenuation Factor (Cable Loss)
RA = Reading Amplitude	AG = Amplifier Gain
AF = Antenna Factor	

RADIATION LIMIT

For unintentional device, according to § 15.109(a), except for Class A digital devices, the field strength of radiated emissions from unintentional radiators at a distance of 3 meters shall not exceed the following values:

Frequency (MHz)	Distance (Meters)	Radiated (dBµV/m)	Radiated (µV/m)
30-88	3	40.0	100
88-216	3	43.5	150
216-960	3	46.0	200
Above 960	3	54.0	500

For intentional device, according to § 15.209(a), the general requirement of field strength of radiated emissions from intentional radiators at a distance of 3 meters shall not exceed the above table.

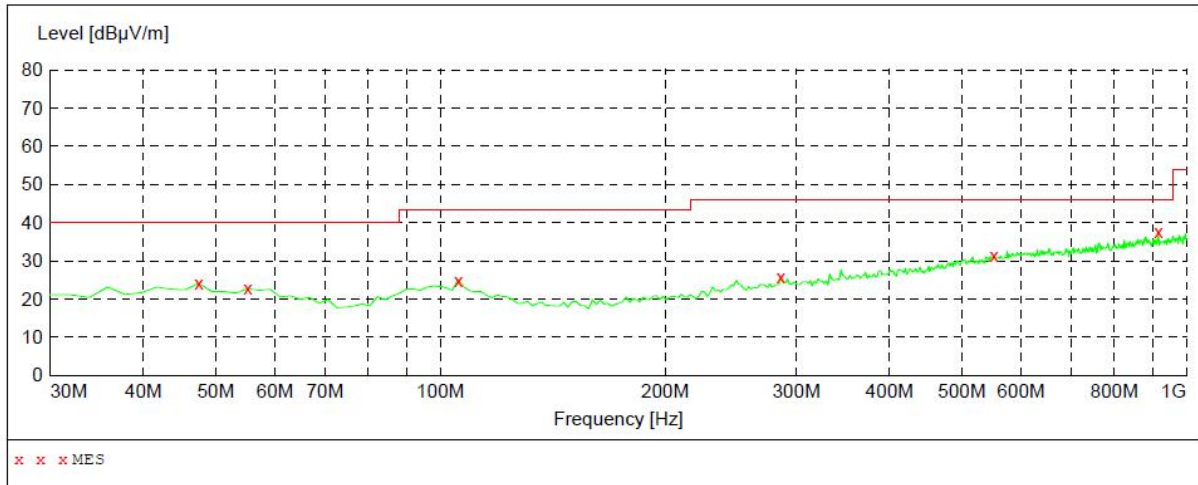
Test Procedure

1. The EUT is placed on a turntable, which is 0.8m above ground plane.
2. The turntable shall be rotated for 360 degrees to determine the position of maximum emission level.
3. EUT is set 3m away from the receiving antenna, which is varied from 1m to 4m to find out the highest emissions.
4. Maximum procedure was performed on the six highest emissions to ensure EUT compliance.
5. And also, each emission was to be maximized by changing the polarization of receiving antenna both horizontal and vertical.
6. Repeat above procedures until the measurements for all frequencies are complete.

Radiation Test Results

SWEEP TABLE: "test (30M-1G)"

Short Description:		Field Strength			
Start	Stop	Detector	Meas. Time	IF Bandw.	Transducer
30.0 MHz	1.0 GHz	MaxPeak	Coupled	100 kHz	VULB9163 NEW

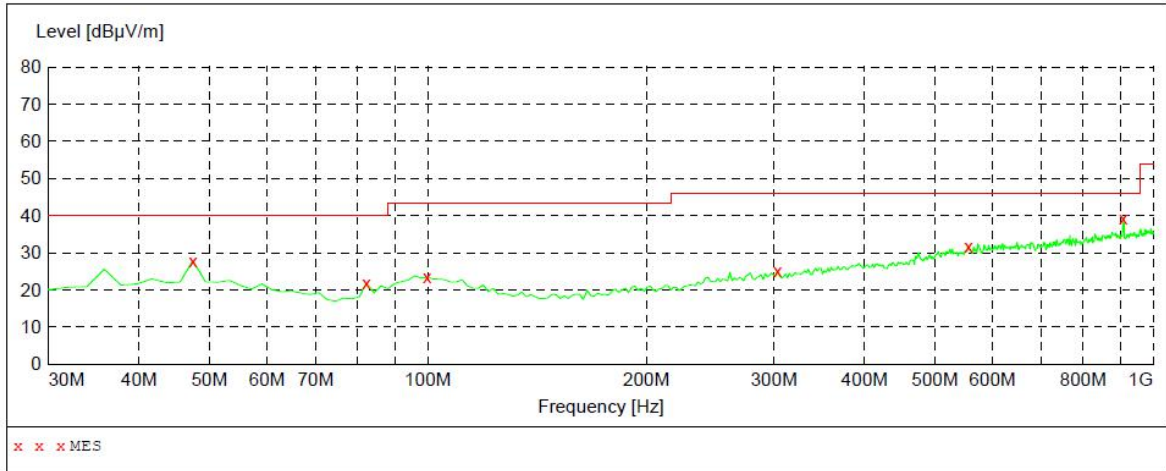


MEASUREMENT RESULT:

Frequency MHz	Level dBµV/m	Transd dB	Limit dBµV/m	Margin dB	Det.	Height cm	Azimuth deg	Polarization
47.460000	24.10	15.8	40.0	15.9	---	100.0	0.00	HORIZONTAL
55.220000	22.70	15.6	40.0	17.3	---	100.0	0.00	HORIZONTAL
105.660000	25.00	16.9	43.5	18.5	---	300.0	0.00	HORIZONTAL
286.080000	25.70	18.3	46.0	20.3	---	300.0	0.00	HORIZONTAL
551.860000	31.30	25.0	46.0	14.7	---	300.0	0.00	HORIZONTAL
916.580000	37.60	29.3	46.0	8.4	---	300.0	0.00	HORIZONTAL

SWEEP TABLE: "test (30M-1G)"

Short Description: Field Strength
 Start Stop Detector Meas. IF Transducer
 Frequency Frequency Time Bandw.
 30.0 MHz 1.0 GHz MaxPeak Coupled 100 kHz VULB9163 NEW

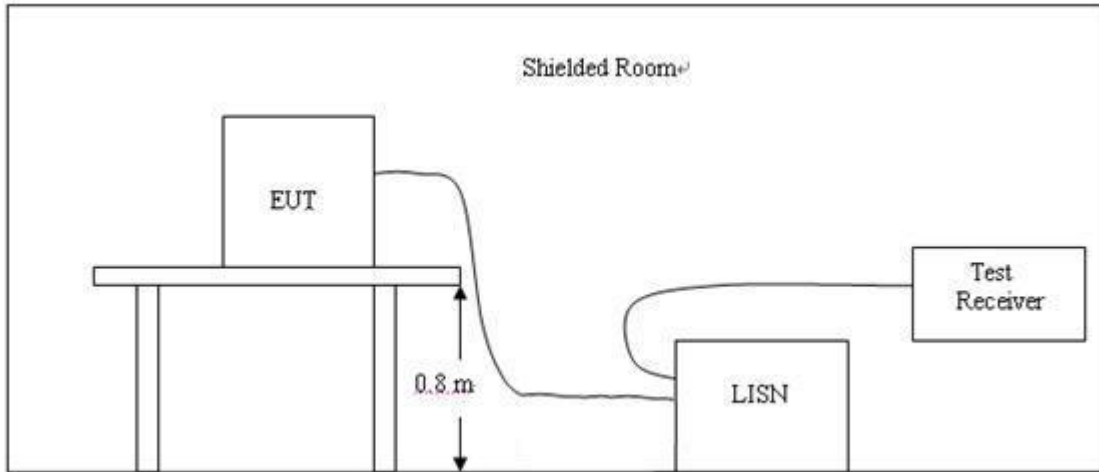


MEASUREMENT RESULT:

Frequenc MHz	Leve dBµV/m	Transd dB	Limit dBµV/m	Margin dB	Det.	Height cm	Azimuth deg	Polarization
47.460000	27.90	15.8	40.0	12.1	---	100.0	0.00	VERTICAL
82.380000	21.90	13.4	40.0	18.1	---	100.0	0.00	VERTICAL
99.840000	23.40	17.5	43.5	20.1	---	100.0	0.00	VERTICAL
303.540000	25.10	18.8	46.0	20.9	---	100.0	0.00	VERTICAL
555.740000	31.80	25.1	46.0	14.2	---	100.0	0.00	VERTICAL
908.820000	39.40	29.3	46.0	6.6	---	100.0	0.00	VERTICAL

4.2. Conducted Emissions Test

TEST CONFIGURATION



TEST PROCEDURE

- 1 The equipment was set up as per the test configuration to simulate typical actual usage per the user's manual. The EUT is a tabletop system, a wooden table with a height of 0.8 meters is used and is placed on the ground plane as per ANSI C63.4.
- 2 Support equipment, if needed, was placed as per ANSI C63.4.
- 3 All I/O cables were positioned to simulate typical actual usage as per ANSI C63.4.
- 4 The EUT received power through a Line Impedance Stabilization Network (LISN) which supplied power source and was grounded to the ground plane.
- 5 All support equipments received AC power from a second LISN, if any.
- 6 The EUT test program was started. Emissions were measured on each current carrying line of the EUT using a spectrum Analyzer / Receiver connected to the LISN powering the EUT. The LISN has two monitoring points: Line 1 (Hot Side) and Line 2 (Neutral Side). Two scans were taken: one with Line 1 connected to Analyzer / Receiver and Line 2 connected to a 50 ohm load; the second scan had Line 1 connected to a 50 ohm load and Line 2 connected to the Analyzer / Receiver.
- 7 Analyzer / Receiver scanned from 150 KHz to 30MHz for emissions in each of the test modes.
- 8 During the above scans, the emissions were maximized by cable manipulation.

Conducted Power Line Emission Limit

For unintentional device, according to § 15.107(a) Line Conducted Emission Limits is as following :

Frequency (MHz)	Maximum RF Line Voltage (dBµV)			
	CLASS A		CLASS B	
	Q.P.	Ave.	Q.P.	Ave.
0.15 - 0.50	79	66	66-56*	56-46*
0.50 - 5.00	73	60	56	46
5.00 - 30.0	73	60	60	50

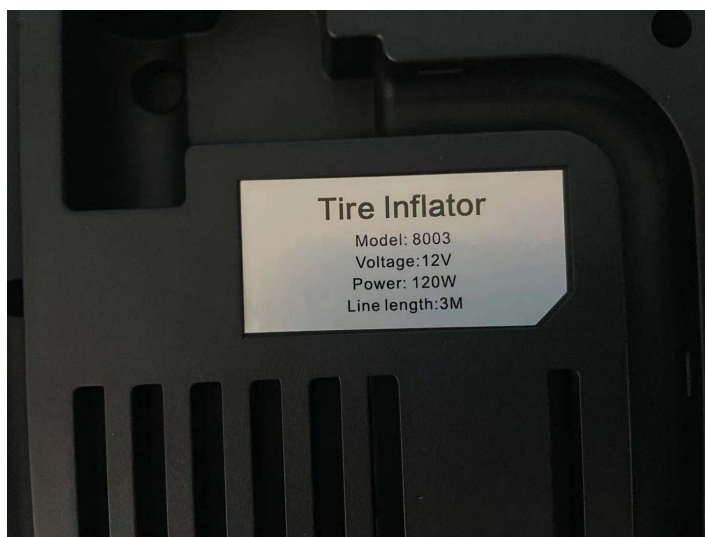
* Decreasing linearly with the logarithm of the frequency

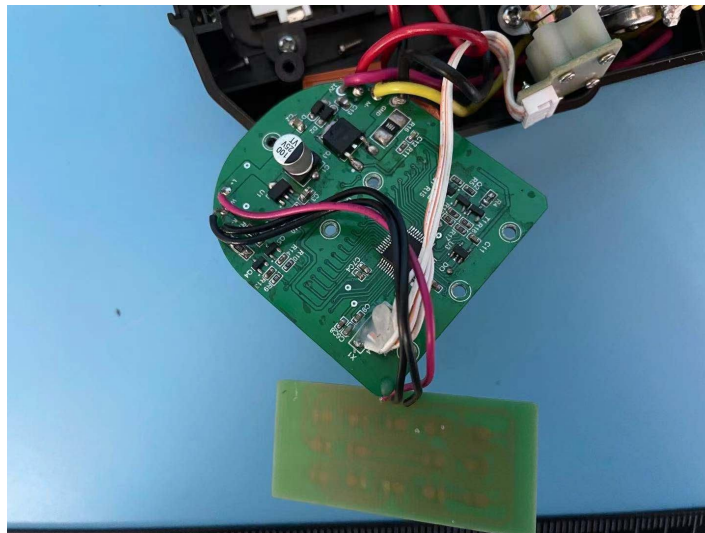
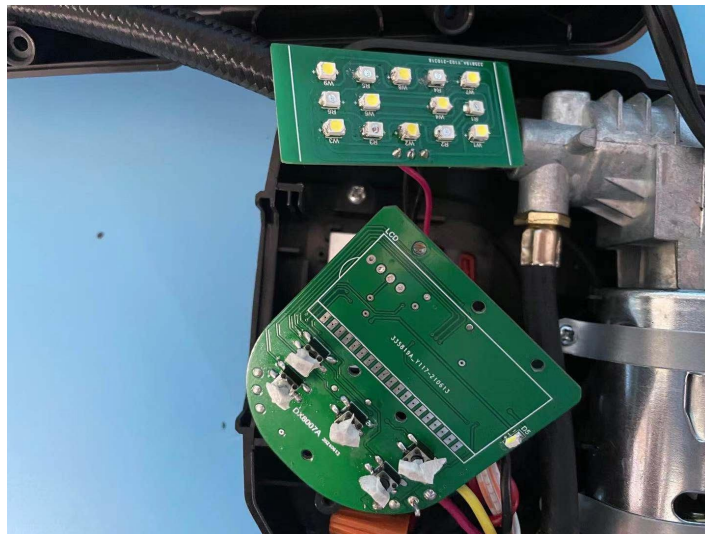
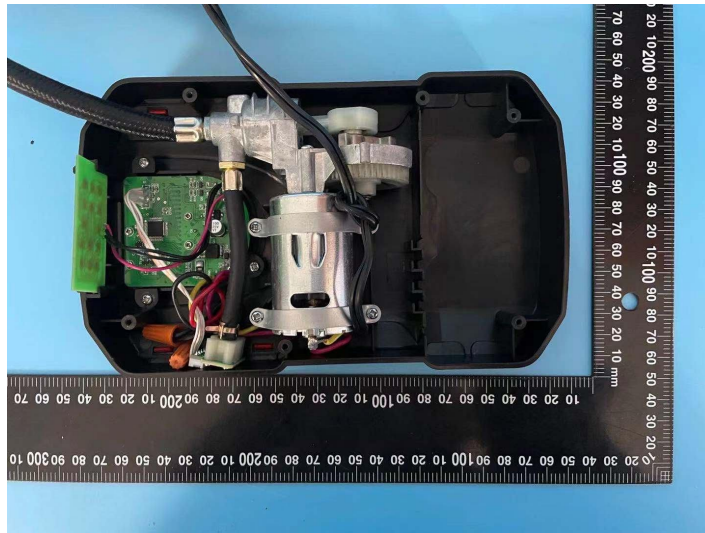
For intentional device, according to §15.207(a) Line Conducted Emission Limit is same as above table.

TEST RESULTS

The test is not applicable

5. Photos of the EUT





.....End of Report.....