



Report No. HTT202412906CH

RoHS Test Report

Application information:

Applicant name:	Yuyao carzkool Appliances Of Autocar Co., Ltd
Address:	6-1,Huangjianshan Ind. Zone, Yuyao City, Zhejiang Province, China 315400
Manufacturer:	Yuyao carzkool Appliances Of Autocar Co., Ltd
Address:	6-1,Huangjianshan Ind. Zone, Yuyao City, Zhejiang Province, China 315400

Sample information:

Sample Name:	Electric Air Pump
Sample Model:	CZK-5641
Trade mark:	N/A
Sample Received Date:	Dec. 16, 2024
Testing Period:	Dec. 16, 2024 ~ Dec. 20, 2024
Test Requested:	As specified by client, to determine the Lead, Cadmium, Mercury,Hexavalent Chromium, PBBs, PBDEs, The Phthalate(DEHP, BBP, DBP & DIBP) content in the submitted sample compliance with RoHS directive 2011/65/EU Annex II amending Annex (EU)2015/863 and amending Annex (EU)2017/2102.
Test Method:	Please refer to next page.
Test Results	Please refer to next page(s).
Conclusion:	Based on the performed tests on submitted sample(s), the results Comply with the RoHS Directive 2011/65/EU, (EU) 2015/863 and amending Annex (EU)2017/2102.

Completed by:

Haw Ma

Reviewed by:

Leo Zhang

Approved by:

Kevin Yang

Technical Manager



Shenzhen HTT Technology Co., Ltd.



RoHS Test Report

1. Test Method(s):

As requested by the client, Reference to IEC 62321-3-1:2013 (Ed1.0) Procedures for the screening analysis of Lead (Pb), Cadmium (Cd), Mercury (Hg), total Chromium (Cr), and Bromine (Br) by XRF. If the screening analysis results exceed the screening limits of IEC 62321-3-1:2013 (Ed1.0) Annex A, use the chemical methods for testing.

Table1 IEC 62321-3-1:2013 (Ed1.0) Annex A screening limits of XRF (mg/kg)

Element	Polymer	Metal	Composite Materials
Cd	$BL \leq (70-3\sigma) < X < (130+3\sigma) \leq OL$	$BL \leq (70-3\sigma) < X < (130+3\sigma) \leq OL$	$LOD < X < (150+3\sigma) \leq OL$
Pb	$BL \leq (700-3\sigma) < X < (1300+3\sigma) \leq OL$	$BL \leq (700-3\sigma) < X < (1300+3\sigma) \leq OL$	$BL \leq (500-3\sigma) < X < (1500+3\sigma) \leq OL$
Hg	$BL \leq (700-3\sigma) < X < (1300+3\sigma) \leq OL$	$BL \leq (700-3\sigma) < X < (1300+3\sigma) \leq OL$	$BL \leq (500-3\sigma) < X < (1500+3\sigma) \leq OL$
Br	$BL \leq (300-3\sigma) < X$	Not applicable	$BL \leq (250-3\sigma) < X$
Cr	$BL \leq (700-3\sigma) < X$	$BL \leq (700-3\sigma) < X$	$BL \leq (500-3\sigma) < X$

BL = Less than screening limits of XRF

OL = More than screening limits of XRF

X = The results of screening analysis by XRF are within this range, requiring further chemical testing.

LOD = Limit of Detection

Table2 testing methods & Equipments

Testing Item	Testing Method	Equipment
Screening analysis by XRF		
Lead (Pb), Cadmium (Cd), Mercury (Hg) Chromium (Cr), Bromine (Br)	IEC 62321-3-1:2013 (Ed1.0)	ED-XRF
Chemical testing		
Lead (Pb)	IEC 62321-5:2013 (Ed1.0)	ICP-OES
Cadmium (Cd)	IEC 62321-5:2013 (Ed1.0)	ICP-OES
Mercury(Hg)	IEC 62321-4:2017 (Ed1.0)	ICP-OES
Hexavalent chromium (Cr(VI)) for plastic	IEC 62321-7-2:2017 (Ed1.0)	UV-VIS
Hexavalent chromium (Cr(VI)) for coating on metals	IEC 62321-7-1:2015 (Ed1.0)	UV-VIS
PBBs	IEC 62321-6:2015 (Ed1.0)	GC-MS
PBDEs	IEC 62321-6:2015 (Ed1.0)	GC-MS
DBP	IEC 62321-8:2017 (Ed1.0)	GC-MS
BBP	IEC 62321-8:2017 (Ed1.0)	GC-MS
DEHP	IEC 62321-8:2017 (Ed1.0)	GC-MS
DIBP	IEC 62321-8:2017 (Ed1.0)	GC-MS



RoHS Test Report

2. Method Detection Limit (MDL):

For XRF screening analysis (mg/kg)

Item	Pb	Cd	Hg	Br	Cr
Polymer	20	20	20	20	20
Other materials	50	50	50	50	50

For chemical testing (mg/kg)

Item	Pb	Cd	Hg	PBBs	PBDEs	DEHP	BBP	DBP	DIBP	Cr(VI)
General materials	2	2	2	10	10	50	50	50	50	See remark (2)

Remark:

(1) PBBs and PBDEs method detection limit only for one substance;

(2) MDL for polymer and Composites is 8 mg/kg, MDL for coating on metals is 0.10 $\mu\text{g}/\text{cm}^2$.

3. RoHS Requirement (mg/kg):

Restricted substances	Cd	Pb	Hg	Cr(VI)	PBBs	PBDEs	DEHP	BBP	DBP	DIBP
RoHS limit	100	1000	1000	1000	1000	1000	1000	1000	1000	1000



RoHS Test Report

4. Test Result(s):

Part No.	Part Description	Restricted Substances	Results (mg/kg)		Conclusion (P/F)
			EDXRF	Chemical testing	
1	Golden metal	Cd	BL	/	P
		Pb	BL	/	P
		Hg	BL	/	P
		Cr(VI)	BL	/	P
		PBBs	/	/	P
		PBDEs	/	/	P
		DEHP	/	/	P
		DBP	/	/	P
		BBP	/	/	P
		DIBP	/	/	P
2	Black plastic	Cd	BL	/	P
		Pb	BL	/	P
		Hg	BL	/	P
		Cr(VI)	BL	/	P
		PBBs	BL	/	P
		PBDEs	BL	/	P
		DEHP	/	N.D.	P
		DBP	/	N.D.	P
		BBP	/	N.D.	P
		DIBP	/	N.D.	P
3	Silvery metal	Cd	BL	/	P
		Pb	BL	/	P
		Hg	BL	/	P
		Cr(VI)	BL	/	P
		PBBs	/	/	P
		PBDEs	/	/	P
		DEHP	/	/	P
		DBP	/	/	P
		BBP	/	/	P
		DIBP	/	/	P
4	Silvery metal	Cd	BL	/	P
		Pb	BL	/	P
		Hg	BL	/	P
		Cr(VI)	BL	/	P
		PBBs	/	/	P
		PBDEs	/	/	P
		DEHP	/	/	P
		DBP	/	/	P
		BBP	/	/	P
		DIBP	/	/	P



RoHS Test Report

Part No.	Part Description	Restricted Substances	Results (mg/kg)		Conclusion (P/F)
			EDXRF	Chemical testing	
5	Silvery metal screw	Cd	BL	/	P
		Pb	BL	/	P
		Hg	BL	/	P
		Cr(VI)	BL	/	P
		PBBs	/	/	P
		PBDEs	/	/	P
		DEHP	/	/	P
		DBP	/	/	P
		BBP	/	/	P
		DIBP	/	/	P
6	Black plastic	Cd	BL	/	P
		Pb	BL	/	P
		Hg	BL	/	P
		Cr(VI)	BL	/	P
		PBBs	BL	/	P
		PBDEs	BL	/	P
		DEHP	/	N.D.	P
		DBP	/	N.D.	P
		BBP	/	N.D.	P
		DIBP	/	N.D.	P
7	Black plastic	Cd	BL	/	P
		Pb	BL	/	P
		Hg	BL	/	P
		Cr(VI)	BL	/	P
		PBBs	BL	/	P
		PBDEs	BL	/	P
		DEHP	/	N.D.	P
		DBP	/	N.D.	P
		BBP	/	N.D.	P
		DIBP	/	N.D.	P
8	Orange plastic	Cd	BL	/	P
		Pb	BL	/	P
		Hg	BL	/	P
		Cr(VI)	BL	/	P
		PBBs	BL	/	P
		PBDEs	BL	/	P
		DEHP	/	N.D.	P
		DBP	/	N.D.	P
		BBP	/	N.D.	P
		DIBP	/	N.D.	P



RoHS Test Report

Part No.	Part Description	Restricted Substances	Results (mg/kg)		Conclusion (P/F)
			EDXRF	Chemical testing	
9	Black soft plastic	Cd	BL	/	P
		Pb	BL	/	P
		Hg	BL	/	P
		Cr(VI)	BL	/	P
		PBBs	BL	/	P
		PBDEs	BL	/	P
		DEHP	/	N.D.	P
		DBP	/	N.D.	P
		BBP	/	N.D.	P
		DIBP	/	N.D.	P
10	Silvery metal screw	Cd	BL	/	P
		Pb	BL	/	P
		Hg	BL	/	P
		Cr(VI)	BL	/	P
		PBBs	/	/	P
		PBDEs	/	/	P
		DEHP	/	/	P
		DBP	/	/	P
		BBP	/	/	P
		DIBP	/	/	P
11	Black sticker	Cd	BL	/	P
		Pb	BL	/	P
		Hg	BL	/	P
		Cr(VI)	BL	/	P
		PBBs	BL	/	P
		PBDEs	BL	/	P
		DEHP	/	N.D.	P
		DBP	/	N.D.	P
		BBP	/	N.D.	P
		DIBP	/	N.D.	P
12	Silvery metal screw	Cd	BL	/	P
		Pb	BL	/	P
		Hg	BL	/	P
		Cr(VI)	BL	/	P
		PBBs	/	/	P
		PBDEs	/	/	P
		DEHP	/	/	P
		DBP	/	/	P
		BBP	/	/	P
		DIBP	/	/	P



RoHS Test Report

Part No.	Part Description	Restricted Substances	Results (mg/kg)		Conclusion (P/F)
			EDXRF	Chemical testing	
13	Black plastic	Cd	BL	/	P
		Pb	BL	/	P
		Hg	BL	/	P
		Cr(VI)	BL	/	P
		PBBs	BL	/	P
		PBDEs	BL	/	P
		DEHP	/	N.D.	P
		DBP	/	N.D.	P
		BBP	/	N.D.	P
		DIBP	/	N.D.	P
14	Orange soft plastic	Cd	BL	/	P
		Pb	BL	/	P
		Hg	BL	/	P
		Cr(VI)	BL	/	P
		PBBs	BL	/	P
		PBDEs	BL	/	P
		DEHP	/	N.D.	P
		DBP	/	N.D.	P
		BBP	/	N.D.	P
		DIBP	/	N.D.	P
15	Black soft plastic	Cd	BL	/	P
		Pb	BL	/	P
		Hg	BL	/	P
		Cr(VI)	BL	/	P
		PBBs	BL	/	P
		PBDEs	BL	/	P
		DEHP	/	N.D.	P
		DBP	/	N.D.	P
		BBP	/	N.D.	P
		DIBP	/	N.D.	P
16	White plastic	Cd	BL	/	P
		Pb	BL	/	P
		Hg	BL	/	P
		Cr(VI)	BL	/	P
		PBBs	BL	/	P
		PBDEs	BL	/	P
		DEHP	/	N.D.	P
		DBP	/	N.D.	P
		BBP	/	N.D.	P
		DIBP	/	N.D.	P



RoHS Test Report

Part No.	Part Description	Restricted Substances	Results (mg/kg)		Conclusion (P/F)
			EDXRF	Chemical testing	
17	Black plastic	Cd	BL	/	P
		Pb	BL	/	P
		Hg	BL	/	P
		Cr(VI)	BL	/	P
		PBBs	BL	/	P
		PBDEs	BL	/	P
		DEHP	/	N.D.	P
		DBP	/	N.D.	P
		BBP	/	N.D.	P
		DIBP	/	N.D.	P
18	Black plastic (wire insulation)	Cd	BL	/	P
		Pb	BL	/	P
		Hg	BL	/	P
		Cr(VI)	BL	/	P
		PBBs	BL	/	P
		PBDEs	BL	/	P
		DEHP	/	N.D.	P
		DBP	/	N.D.	P
		BBP	/	N.D.	P
		DIBP	/	N.D.	P
19	White plastic	Cd	BL	/	P
		Pb	BL	/	P
		Hg	BL	/	P
		Cr(VI)	BL	/	P
		PBBs	BL	/	P
		PBDEs	BL	/	P
		DEHP	/	N.D.	P
		DBP	/	N.D.	P
		BBP	/	N.D.	P
		DIBP	/	N.D.	P
20	Black plastic (wire insulation)	Cd	BL	/	P
		Pb	BL	/	P
		Hg	BL	/	P
		Cr(VI)	BL	/	P
		PBBs	BL	/	P
		PBDEs	BL	/	P
		DEHP	/	N.D.	P
		DBP	/	N.D.	P
		BBP	/	N.D.	P
		DIBP	/	N.D.	P



RoHS Test Report

Part No.	Part Description	Restricted Substances	Results (mg/kg)		Conclusion (P/F)
			EDXRF	Chemical testing	
21	Silvery metal	Cd	BL	/	P
		Pb	BL	/	P
		Hg	BL	/	P
		Cr(VI)	BL	/	P
		PBBs	/	/	P
		PBDEs	/	/	P
		DEHP	/	/	P
		DBP	/	/	P
		BBP	/	/	P
		DIBP	/	/	P
22	White plastic	Cd	BL	/	P
		Pb	BL	/	P
		Hg	BL	/	P
		Cr(VI)	BL	/	P
		PBBs	BL	/	P
		PBDEs	BL	/	P
		DEHP	/	N.D.	P
		DBP	/	N.D.	P
		BBP	/	N.D.	P
		DIBP	/	N.D.	P
23	Beige plastic	Cd	BL	/	P
		Pb	BL	/	P
		Hg	BL	/	P
		Cr(VI)	BL	/	P
		PBBs	BL	/	P
		PBDEs	BL	/	P
		DEHP	/	N.D.	P
		DBP	/	N.D.	P
		BBP	/	N.D.	P
		DIBP	/	N.D.	P
24	Silvery metal	Cd	BL	/	P
		Pb	BL	/	P
		Hg	BL	/	P
		Cr(VI)	BL	/	P
		PBBs	/	/	P
		PBDEs	/	/	P
		DEHP	/	/	P
		DBP	/	/	P
		BBP	/	/	P
		DIBP	/	/	P



RoHS Test Report

Part No.	Part Description	Restricted Substances	Results (mg/kg)		Conclusion (P/F)
			EDXRF	Chemical testing	
25	Silvery metal	Cd	BL	/	P
		Pb	BL	/	P
		Hg	BL	/	P
		Cr(VI)	BL	/	P
		PBBs	/	/	P
		PBDEs	/	/	P
		DEHP	/	/	P
		DBP	/	/	P
		BBP	/	/	P
		DIBP	/	/	P
26	Yellow LED	Cd	BL	/	P
		Pb	BL	/	P
		Hg	BL	/	P
		Cr(VI)	BL	/	P
		PBBs	BL	/	P
		PBDEs	BL	/	P
		DEHP	/	N.D.	P
		DBP	/	N.D.	P
		BBP	/	N.D.	P
		DIBP	/	N.D.	P
27	White LED	Cd	BL	/	P
		Pb	BL	/	P
		Hg	BL	/	P
		Cr(VI)	BL	/	P
		PBBs	BL	/	P
		PBDEs	BL	/	P
		DEHP	/	N.D.	P
		DBP	/	N.D.	P
		BBP	/	N.D.	P
		DIBP	/	N.D.	P
28	Black PCB	Cd	BL	/	P
		Pb	BL	/	P
		Hg	BL	/	P
		Cr(VI)	BL	/	P
		PBBs	BL	/	P
		PBDEs	BL	/	P
		DEHP	/	N.D.	P
		DBP	/	N.D.	P
		BBP	/	N.D.	P
		DIBP	/	N.D.	P



RoHS Test Report

Part No.	Part Description	Restricted Substances	Results (mg/kg)		Conclusion (P/F)
			EDXRF	Chemical testing	
29	Silvery metal screw	Cd	BL	/	P
		Pb	BL	/	P
		Hg	BL	/	P
		Cr(VI)	BL	/	P
		PBBs	/	/	P
		PBDEs	/	/	P
		DEHP	/	/	P
		DBP	/	/	P
		BBP	/	/	P
		DIBP	/	/	P
30	Black sticker	Cd	BL	/	P
		Pb	BL	/	P
		Hg	BL	/	P
		Cr(VI)	BL	/	P
		PBBs	BL	/	P
		PBDEs	BL	/	P
		DEHP	/	N.D.	P
		DBP	/	N.D.	P
		BBP	/	N.D.	P
		DIBP	/	N.D.	P
31	White plastic	Cd	BL	/	P
		Pb	BL	/	P
		Hg	BL	/	P
		Cr(VI)	BL	/	P
		PBBs	BL	/	P
		PBDEs	BL	/	P
		DEHP	/	N.D.	P
		DBP	/	N.D.	P
		BBP	/	N.D.	P
		DIBP	/	N.D.	P
32	Silvery metal	Cd	BL	/	P
		Pb	BL	/	P
		Hg	BL	/	P
		Cr(VI)	BL	/	P
		PBBs	/	/	P
		PBDEs	/	/	P
		DEHP	/	/	P
		DBP	/	/	P
		BBP	/	/	P
		DIBP	/	/	P



RoHS Test Report

Part No.	Part Description	Restricted Substances	Results (mg/kg)		Conclusion (P/F)
			EDXRF	Chemical testing	
33	Silvery metal	Cd	BL	/	P
		Pb	BL	/	P
		Hg	BL	/	P
		Cr(VI)	BL	/	P
		PBBs	/	/	P
		PBDEs	/	/	P
		DEHP	/	/	P
		DBP	/	/	P
		BBP	/	/	P
		DIBP	/	/	P
34	Gray plastic	Cd	BL	/	P
		Pb	BL	/	P
		Hg	BL	/	P
		Cr(VI)	BL	/	P
		PBBs	BL	/	P
		PBDEs	BL	/	P
		DEHP	/	N.D.	P
		DBP	/	N.D.	P
		BBP	/	N.D.	P
		DIBP	/	N.D.	P
35	Silvery metal	Cd	BL	/	P
		Pb	BL	/	P
		Hg	BL	/	P
		Cr(VI)	BL	/	P
		PBBs	/	/	P
		PBDEs	/	/	P
		DEHP	/	/	P
		DBP	/	/	P
		BBP	/	/	P
		DIBP	/	/	P
36	Silvery metal	Cd	BL	/	P
		Pb	BL	/	P
		Hg	BL	/	P
		Cr(VI)	BL	/	P
		PBBs	/	/	P
		PBDEs	/	/	P
		DEHP	/	/	P
		DBP	/	/	P
		BBP	/	/	P
		DIBP	/	/	P



RoHS Test Report

Part No.	Part Description	Restricted Substances	Results (mg/kg)		Conclusion (P/F)
			EDXRF	Chemical testing	
37	Gray plastic	Cd	BL	/	P
		Pb	BL	/	P
		Hg	BL	/	P
		Cr(VI)	BL	/	P
		PBBs	BL	/	P
		PBDEs	BL	/	P
		DEHP	/	N.D.	P
		DBP	/	N.D.	P
		BBP	/	N.D.	P
		DIBP	/	N.D.	P
38	Silvery metal	Cd	BL	/	P
		Pb	BL	/	P
		Hg	BL	/	P
		Cr(VI)	BL	/	P
		PBBs	/	/	P
		PBDEs	/	/	P
		DEHP	/	/	P
		DBP	/	/	P
		BBP	/	/	P
		DIBP	/	/	P
39	Black diode	Cd	BL	/	P
		Pb	BL	/	P
		Hg	BL	/	P
		Cr(VI)	BL	/	P
		PBBs	BL	/	P
		PBDEs	BL	/	P
		DEHP	/	N.D.	P
		DBP	/	N.D.	P
		BBP	/	N.D.	P
		DIBP	/	N.D.	P
40	Black IC	Cd	BL	/	P
		Pb	BL	/	P
		Hg	BL	/	P
		Cr(VI)	BL	/	P
		PBBs	BL	/	P
		PBDEs	BL	/	P
		DEHP	/	N.D.	P
		DBP	/	N.D.	P
		BBP	/	N.D.	P
		DIBP	/	N.D.	P



RoHS Test Report

Part No.	Part Description	Restricted Substances	Results (mg/kg)		Conclusion (P/F)
			EDXRF	Chemical testing	
41	Black IC	Cd	BL	/	P
		Pb	BL	/	P
		Hg	BL	/	P
		Cr(VI)	BL	/	P
		PBBs	BL	/	P
		PBDEs	BL	/	P
		DEHP	/	N.D.	P
		DBP	/	N.D.	P
		BBP	/	N.D.	P
		DIBP	/	N.D.	P
42	Black IC	Cd	BL	/	P
		Pb	BL	/	P
		Hg	BL	/	P
		Cr(VI)	BL	/	P
		PBBs	BL	/	P
		PBDEs	BL	/	P
		DEHP	/	N.D.	P
		DBP	/	N.D.	P
		BBP	/	N.D.	P
		DIBP	/	N.D.	P
43	Gray inductance	Cd	BL	/	P
		Pb	BL	/	P
		Hg	BL	/	P
		Cr(VI)	BL	/	P
		PBBs	BL	/	P
		PBDEs	BL	/	P
		DEHP	/	N.D.	P
		DBP	/	N.D.	P
		BBP	/	N.D.	P
		DIBP	/	N.D.	P
44	Black diode	Cd	BL	/	P
		Pb	BL	/	P
		Hg	BL	/	P
		Cr(VI)	BL	/	P
		PBBs	BL	/	P
		PBDEs	BL	/	P
		DEHP	/	N.D.	P
		DBP	/	N.D.	P
		BBP	/	N.D.	P
		DIBP	/	N.D.	P



RoHS Test Report

Part No.	Part Description	Restricted Substances	Results (mg/kg)		Conclusion (P/F)
			EDXRF	Chemical testing	
45	Black IC	Cd	BL	/	P
		Pb	BL	/	P
		Hg	BL	/	P
		Cr(VI)	BL	/	P
		PBBs	BL	/	P
		PBDEs	BL	/	P
		DEHP	/	N.D.	P
		DBP	/	N.D.	P
		BBP	/	N.D.	P
		DIBP	/	N.D.	P
46	Black SMD resistance	Cd	BL	/	P
		Pb	BL	/	P
		Hg	BL	/	P
		Cr(VI)	BL	/	P
		PBBs	BL	/	P
		PBDEs	BL	/	P
		DEHP	/	N.D.	P
		DBP	/	N.D.	P
		BBP	/	N.D.	P
		DIBP	/	N.D.	P
47	Black triode	Cd	BL	/	P
		Pb	BL	/	P
		Hg	BL	/	P
		Cr(VI)	BL	/	P
		PBBs	BL	/	P
		PBDEs	BL	/	P
		DEHP	/	N.D.	P
		DBP	/	N.D.	P
		BBP	/	N.D.	P
		DIBP	/	N.D.	P
48	Black SMD resistance	Cd	BL	/	P
		Pb	BL	/	P
		Hg	BL	/	P
		Cr(VI)	BL	/	P
		PBBs	BL	/	P
		PBDEs	BL	/	P
		DEHP	/	N.D.	P
		DBP	/	N.D.	P
		BBP	/	N.D.	P
		DIBP	/	N.D.	P



RoHS Test Report

Part No.	Part Description	Restricted Substances	Results (mg/kg)		Conclusion (P/F)
			EDXRF	Chemical testing	
49	Black IC	Cd	BL	/	P
		Pb	BL	/	P
		Hg	BL	/	P
		Cr(VI)	BL	/	P
		PBBs	BL	/	P
		PBDEs	BL	/	P
		DEHP	/	N.D.	P
		DBP	/	N.D.	P
		BBP	/	N.D.	P
		DIBP	/	N.D.	P
50	Golden metal	Cd	BL	/	P
		Pb	BL	/	P
		Hg	BL	/	P
		Cr(VI)	BL	/	P
		PBBs	/	/	P
		PBDEs	/	/	P
		DEHP	/	/	P
		DBP	/	/	P
		BBP	/	/	P
		DIBP	/	/	P
51	Silvery metal	Cd	BL	/	P
		Pb	BL	/	P
		Hg	BL	/	P
		Cr(VI)	BL	/	P
		PBBs	/	/	P
		PBDEs	/	/	P
		DEHP	/	/	P
		DBP	/	/	P
		BBP	/	/	P
		DIBP	/	/	P
52	Yellow LED	Cd	BL	/	P
		Pb	BL	/	P
		Hg	BL	/	P
		Cr(VI)	BL	/	P
		PBBs	BL	/	P
		PBDEs	BL	/	P
		DEHP	/	N.D.	P
		DBP	/	N.D.	P
		BBP	/	N.D.	P
		DIBP	/	N.D.	P



RoHS Test Report

Part No.	Part Description	Restricted Substances	Results (mg/kg)		Conclusion (P/F)
			EDXRF	Chemical testing	
53	Red plastic (wire insulation)	Cd	BL	/	P
		Pb	BL	/	P
		Hg	BL	/	P
		Cr(VI)	BL	/	P
		PBBs	BL	/	P
		PBDEs	BL	/	P
		DEHP	/	N.D.	P
		DBP	/	N.D.	P
		BBP	/	N.D.	P
		DIBP	/	N.D.	P
54	Blue plastic (wire insulation)	Cd	BL	/	P
		Pb	BL	/	P
		Hg	BL	/	P
		Cr(VI)	BL	/	P
		PBBs	BL	/	P
		PBDEs	BL	/	P
		DEHP	/	N.D.	P
		DBP	/	N.D.	P
		BBP	/	N.D.	P
		DIBP	/	N.D.	P
55	Black soft plastic	Cd	BL	/	P
		Pb	BL	/	P
		Hg	BL	/	P
		Cr(VI)	BL	/	P
		PBBs	BL	/	P
		PBDEs	BL	/	P
		DEHP	/	N.D.	P
		DBP	/	N.D.	P
		BBP	/	N.D.	P
		DIBP	/	N.D.	P
56	Silvery metal spring	Cd	BL	/	P
		Pb	BL	/	P
		Hg	BL	/	P
		Cr(VI)	BL	/	P
		PBBs	/	/	P
		PBDEs	/	/	P
		DEHP	/	/	P
		DBP	/	/	P
		BBP	/	/	P
		DIBP	/	/	P



RoHS Test Report

Part No.	Part Description	Restricted Substances	Results (mg/kg)		Conclusion (P/F)
			EDXRF	Chemical testing	
57	Black metal screw	Cd	BL	/	P
		Pb	BL	/	P
		Hg	BL	/	P
		Cr(VI)	BL	/	P
		PBBs	/	/	P
		PBDEs	/	/	P
		DEHP	/	/	P
		DBP	/	/	P
		BBP	/	/	P
		DIBP	/	/	P
58	Silvery metal screw	Cd	BL	/	P
		Pb	BL	/	P
		Hg	BL	/	P
		Cr(VI)	BL	/	P
		PBBs	/	/	P
		PBDEs	/	/	P
		DEHP	/	/	P
		DBP	/	/	P
		BBP	/	/	P
		DIBP	/	/	P
59	Crystal oscillator	Cd	BL	/	P
		Pb	BL	/	P
		Hg	BL	/	P
		Cr(VI)	BL	/	P
		PBBs	/	/	P
		PBDEs	/	/	P
		DEHP	/	/	P
		DBP	/	/	P
		BBP	/	/	P
		DIBP	/	/	P
60	Translucent soft plastic	Cd	BL	/	P
		Pb	BL	/	P
		Hg	BL	/	P
		Cr(VI)	BL	/	P
		PBBs	BL	/	P
		PBDEs	BL	/	P
		DEHP	/	N.D.	P
		DBP	/	N.D.	P
		BBP	/	N.D.	P
		DIBP	/	N.D.	P



RoHS Test Report

Part No.	Part Description	Restricted Substances	Results (mg/kg)		Conclusion (P/F)
			EDXRF	Chemical testing	
61	White plastic	Cd	BL	/	P
		Pb	BL	/	P
		Hg	BL	/	P
		Cr(VI)	BL	/	P
		PBBs	BL	/	P
		PBDEs	BL	/	P
		DEHP	/	N.D.	P
		DBP	/	N.D.	P
		BBP	/	N.D.	P
		DIBP	/	N.D.	P
62	Green PCB	Cd	BL	/	P
		Pb	BL	/	P
		Hg	BL	/	P
		Cr(VI)	BL	/	P
		PBBs	BL	/	P
		PBDEs	BL	/	P
		DEHP	/	N.D.	P
		DBP	/	N.D.	P
		BBP	/	N.D.	P
		DIBP	/	N.D.	P
63	Beige plastic	Cd	BL	/	P
		Pb	BL	/	P
		Hg	BL	/	P
		Cr(VI)	BL	/	P
		PBBs	BL	/	P
		PBDEs	BL	/	P
		DEHP	/	N.D.	P
		DBP	/	N.D.	P
		BBP	/	N.D.	P
		DIBP	/	N.D.	P
64	Black plastic	Cd	BL	/	P
		Pb	BL	/	P
		Hg	BL	/	P
		Cr(VI)	BL	/	P
		PBBs	BL	/	P
		PBDEs	BL	/	P
		DEHP	/	N.D.	P
		DBP	/	N.D.	P
		BBP	/	N.D.	P
		DIBP	/	N.D.	P



RoHS Test Report

Part No.	Part Description	Restricted Substances	Results (mg/kg)		Conclusion (P/F)
			EDXRF	Chemical testing	
65	Copper metal	Cd	BL	/	P
		Pb	BL	/	P
		Hg	BL	/	P
		Cr(VI)	BL	/	P
		PBBs	BL	/	P
		PBDEs	BL	/	P
		DEHP	/	N.D.	P
		DBP	/	N.D.	P
		BBP	/	N.D.	P
		DIBP	/	N.D.	P
66	Silvery metal	Cd	BL	/	P
		Pb	BL	/	P
		Hg	BL	/	P
		Cr(VI)	BL	/	P
		PBBs	/	/	P
		PBDEs	/	/	P
		DEHP	/	/	P
		DBP	/	/	P
		BBP	/	/	P
		DIBP	/	/	P
67	Silvery metal with black coating	Cd	BL	/	P
		Pb	BL	/	P
		Hg	BL	/	P
		Cr(VI)	BL	/	P
		PBBs	/	/	P
		PBDEs	/	/	P
		DEHP	/	/	P
		DBP	/	/	P
		BBP	/	/	P
		DIBP	/	/	P
68	Silvery metal	Cd	BL	/	P
		Pb	BL	/	P
		Hg	BL	/	P
		Cr(VI)	BL	/	P
		PBBs	/	/	P
		PBDEs	/	/	P
		DEHP	/	/	P
		DBP	/	/	P
		BBP	/	/	P
		DIBP	/	/	P



RoHS Test Report

Part No.	Part Description	Restricted Substances	Results (mg/kg)		Conclusion (P/F)
			EDXRF	Chemical testing	
69	Black soft plastic	Cd	BL	/	P
		Pb	BL	/	P
		Hg	BL	/	P
		Cr(VI)	BL	/	P
		PBBs	BL	/	P
		PBDEs	BL	/	P
		DEHP	/	N.D.	P
		DBP	/	N.D.	P
		BBP	/	N.D.	P
		DIBP	/	N.D.	P
70	Beige plastic	Cd	BL	/	P
		Pb	BL	/	P
		Hg	BL	/	P
		Cr(VI)	BL	/	P
		PBBs	BL	/	P
		PBDEs	BL	/	P
		DEHP	/	N.D.	P
		DBP	/	N.D.	P
		BBP	/	N.D.	P
		DIBP	/	N.D.	P
71	Black plastic	Cd	BL	/	P
		Pb	BL	/	P
		Hg	BL	/	P
		Cr(VI)	BL	/	P
		PBBs	BL	/	P
		PBDEs	BL	/	P
		DEHP	/	N.D.	P
		DBP	/	N.D.	P
		BBP	/	N.D.	P
		DIBP	/	N.D.	P
72	Black soft plastic	Cd	BL	/	P
		Pb	BL	/	P
		Hg	BL	/	P
		Cr(VI)	BL	/	P
		PBBs	BL	/	P
		PBDEs	BL	/	P
		DEHP	/	N.D.	P
		DBP	/	N.D.	P
		BBP	/	N.D.	P
		DIBP	/	N.D.	P



RoHS Test Report

Part No.	Part Description	Restricted Substances	Results (mg/kg)		Conclusion (P/F)
			EDXRF	Chemical testing	
73	Silvery metal	Cd	BL	/	P
		Pb	BL	/	P
		Hg	BL	/	P
		Cr(VI)	BL	/	P
		PBBs	/	/	P
		PBDEs	/	/	P
		DEHP	/	/	P
		DBP	/	/	P
		BBP	/	/	P
		DIBP	/	/	P
74	Silvery metal	Cd	BL	/	P
		Pb	BL	/	P
		Hg	BL	/	P
		Cr(VI)	BL	/	P
		PBBs	/	/	P
		PBDEs	/	/	P
		DEHP	/	/	P
		DBP	/	/	P
		BBP	/	/	P
		DIBP	/	/	P
75	Copper metal	Cd	BL	/	P
		Pb	BL	/	P
		Hg	BL	/	P
		Cr(VI)	BL	/	P
		PBBs	/	/	P
		PBDEs	/	/	P
		DEHP	/	/	P
		DBP	/	/	P
		BBP	/	/	P
		DIBP	/	/	P
76	Solder	Cd	BL	/	P
		Pb	BL	/	P
		Hg	BL	/	P
		Cr(VI)	BL	/	P
		PBBs	/	/	P
		PBDEs	/	/	P
		DEHP	/	/	P
		DBP	/	/	P
		BBP	/	/	P
		DIBP	/	/	P



RoHS Test Report

Part No.	Part Description	Restricted Substances	Results (mg/kg)		Conclusion (P/F)
			EDXRF	Chemical testing	
77	Golden metal	Cd	BL	/	P
		Pb	BL	/	P
		Hg	BL	/	P
		Cr(VI)	BL	/	P
		PBBs	/	/	P
		PBDEs	/	/	P
		DEHP	/	/	P
		DBP	/	/	P
		BBP	/	/	P
		DIBP	/	/	P
78	Brown ceramics	Cd	BL	/	P
		Pb	BL	/	P
		Hg	BL	/	P
		Cr(VI)	BL	/	P
		PBBs	BL	/	P
		PBDEs	BL	/	P
		DEHP	/	N.D.	P
		DBP	/	N.D.	P
		BBP	/	N.D.	P
		DIBP	/	N.D.	P
79	Copper metal	Cd	BL	/	P
		Pb	BL	/	P
		Hg	BL	/	P
		Cr(VI)	BL	/	P
		PBBs	/	/	P
		PBDEs	/	/	P
		DEHP	/	/	P
		DBP	/	/	P
		BBP	/	/	P
		DIBP	/	/	P
80	Silvery metal	Cd	BL	/	P
		Pb	BL	/	P
		Hg	BL	/	P
		Cr(VI)	BL	/	P
		PBBs	/	/	P
		PBDEs	/	/	P
		DEHP	/	/	P
		DBP	/	/	P
		BBP	/	/	P
		DIBP	/	/	P



RoHS Test Report

Part No.	Part Description	Restricted Substances	Results (mg/kg)		Conclusion (P/F)
			EDXRF	Chemical testing	
81	Beige plastic	Cd	BL	/	P
		Pb	BL	/	P
		Hg	BL	/	P
		Cr(VI)	BL	/	P
		PBBs	BL	/	P
		PBDEs	BL	/	P
		DEHP	/	N.D.	P
		DBP	/	N.D.	P
		BBP	/	N.D.	P
		DIBP	/	N.D.	P
82	Copper metal	Cd	BL	/	P
		Pb	BL	/	P
		Hg	BL	/	P
		Cr(VI)	BL	/	P
		PBBs	/	/	P
		PBDEs	/	/	P
		DEHP	/	/	P
		DBP	/	/	P
		BBP	/	/	P
		DIBP	/	/	P
83	Gray magnet	Cd	BL	/	P
		Pb	BL	/	P
		Hg	BL	/	P
		Cr(VI)	BL	/	P
		PBBs	/	/	P
		PBDEs	/	/	P
		DEHP	/	/	P
		DBP	/	/	P
		BBP	/	/	P
		DIBP	/	/	P
84	Copper metal	Cd	BL	/	P
		Pb	BL	/	P
		Hg	BL	/	P
		Cr(VI)	BL	/	P
		PBBs	/	/	P
		PBDEs	/	/	P
		DEHP	/	/	P
		DBP	/	/	P
		BBP	/	/	P
		DIBP	/	/	P



RoHS Test Report

Part No.	Part Description	Restricted Substances	Results (mg/kg)		Conclusion (P/F)
			EDXRF	Chemical testing	
85	Silvery metal	Cd	BL	/	P
		Pb	BL	/	P
		Hg	BL	/	P
		Cr(VI)	BL	/	P
		PBBs	/	/	P
		PBDEs	/	/	P
		DEHP	/	/	P
		DBP	/	/	P
		BBP	/	/	P
		DIBP	/	/	P
86	Silvery metal	Cd	BL	/	P
		Pb	BL	/	P
		Hg	BL	/	P
		Cr(VI)	BL	/	P
		PBBs	/	/	P
		PBDEs	/	/	P
		DEHP	/	/	P
		DBP	/	/	P
		BBP	/	/	P
		DIBP	/	/	P
87	Silvery metal	Cd	BL	/	P
		Pb	BL	/	P
		Hg	BL	/	P
		Cr(VI)	BL	/	P
		PBBs	/	/	P
		PBDEs	/	/	P
		DEHP	/	/	P
		DBP	/	/	P
		BBP	/	/	P
		DIBP	/	/	P
88	Translucent plastic	Cd	BL	/	P
		Pb	BL	/	P
		Hg	BL	/	P
		Cr(VI)	BL	/	P
		PBBs	BL	/	P
		PBDEs	BL	/	P
		DEHP	/	N.D.	P
		DBP	/	N.D.	P
		BBP	/	N.D.	P
		DIBP	/	N.D.	P



RoHS Test Report

Part No.	Part Description	Restricted Substances	Results (mg/kg)		Conclusion (P/F)
			EDXRF	Chemical testing	
89	Copper metal	Cd	BL	/	P
		Pb	BL	/	P
		Hg	BL	/	P
		Cr(VI)	BL	/	P
		PBBs	/	/	P
		PBDEs	/	/	P
		DEHP	/	/	P
		DBP	/	/	P
		BBP	/	/	P
		DIBP	/	/	P
90	Copper wire	Cd	BL	/	P
		Pb	BL	/	P
		Hg	BL	/	P
		Cr(VI)	BL	/	P
		PBBs	/	/	P
		PBDEs	/	/	P
		DEHP	/	/	P
		DBP	/	/	P
		BBP	/	/	P
		DIBP	/	/	P
91	Green coating	Cd	BL	/	P
		Pb	BL	/	P
		Hg	BL	/	P
		Cr(VI)	BL	/	P
		PBBs	BL	/	P
		PBDEs	BL	/	P
		DEHP	/	N.D.	P
		DBP	/	N.D.	P
		BBP	/	N.D.	P
		DIBP	/	N.D.	P
92	Black plastic	Cd	BL	/	P
		Pb	BL	/	P
		Hg	BL	/	P
		Cr(VI)	BL	/	P
		PBBs	BL	/	P
		PBDEs	BL	/	P
		DEHP	/	N.D.	P
		DBP	/	N.D.	P
		BBP	/	N.D.	P
		DIBP	/	N.D.	P



RoHS Test Report

Part No.	Part Description	Restricted Substances	Results (mg/kg)		Conclusion (P/F)
			EDXRF	Chemical testing	
93	Silvery metal	Cd	BL	/	P
		Pb	BL	/	P
		Hg	BL	/	P
		Cr(VI)	BL	/	P
		PBBs	/	/	P
		PBDEs	/	/	P
		DEHP	/	/	P
		DBP	/	/	P
		BBP	/	/	P
		DIBP	/	/	P
94	White plastic	Cd	BL	/	P
		Pb	BL	/	P
		Hg	BL	/	P
		Cr(VI)	BL	/	P
		PBBs	BL	/	P
		PBDEs	BL	/	P
		DEHP	/	N.D.	P
		DBP	/	N.D.	P
		BBP	/	N.D.	P
		DIBP	/	N.D.	P
95	Silvery metal	Cd	BL	/	P
		Pb	BL	/	P
		Hg	BL	/	P
		Cr(VI)	BL	/	P
		PBBs	/	/	P
		PBDEs	/	/	P
		DEHP	/	/	P
		DBP	/	/	P
		BBP	/	/	P
		DIBP	/	/	P
96	Black plastic	Cd	BL	/	P
		Pb	BL	/	P
		Hg	BL	/	P
		Cr(VI)	BL	/	P
		PBBs	BL	/	P
		PBDEs	BL	/	P
		DEHP	/	N.D.	P
		DBP	/	N.D.	P
		BBP	/	N.D.	P
		DIBP	/	N.D.	P



RoHS Test Report

Part No.	Part Description	Restricted Substances	Results (mg/kg)		Conclusion (P/F)
			EDXRF	Chemical testing	
97	Solder	Cd	BL	/	P
		Pb	BL	/	P
		Hg	BL	/	P
		Cr(VI)	BL	/	P
		PBBs	/	/	P
		PBDEs	/	/	P
		DEHP	/	/	P
		DBP	/	/	P
		BBP	/	/	P
		DIBP	/	/	P
98	Green PCB	Cd	BL	/	P
		Pb	BL	/	P
		Hg	BL	/	P
		Cr(VI)	BL	/	P
		PBBs	BL	/	P
		PBDEs	BL	/	P
		DEHP	/	N.D.	P
		DBP	/	N.D.	P
		BBP	/	N.D.	P
		DIBP	/	N.D.	P
99	Silvery metal	Cd	BL	/	P
		Pb	BL	/	P
		Hg	BL	/	P
		Cr(VI)	BL	/	P
		PBBs	/	/	P
		PBDEs	/	/	P
		DEHP	/	/	P
		DBP	/	/	P
		BBP	/	/	P
		DIBP	/	/	P
100	Gray plastic	Cd	BL	/	P
		Pb	BL	/	P
		Hg	BL	/	P
		Cr(VI)	BL	/	P
		PBBs	BL	/	P
		PBDEs	BL	/	P
		DEHP	/	N.D.	P
		DBP	/	N.D.	P
		BBP	/	N.D.	P
		DIBP	/	N.D.	P



RoHS Test Report

Part No.	Part Description	Restricted Substances	Results (mg/kg)		Conclusion (P/F)
			EDXRF	Chemical testing	
101	Black plastic (wire insulation)	Cd	BL	/	P
		Pb	BL	/	P
		Hg	BL	/	P
		Cr(VI)	BL	/	P
		PBBs	BL	/	P
		PBDEs	BL	/	P
		DEHP	/	N.D.	P
		DBP	/	N.D.	P
		BBP	/	N.D.	P
		DIBP	/	N.D.	P
102	Black plastic (wire insulation)	Cd	BL	/	P
		Pb	BL	/	P
		Hg	BL	/	P
		Cr(VI)	BL	/	P
		PBBs	BL	/	P
		PBDEs	BL	/	P
		DEHP	/	N.D.	P
		DBP	/	N.D.	P
		BBP	/	N.D.	P
		DIBP	/	N.D.	P
103	Red plastic (wire insulation)	Cd	BL	/	P
		Pb	BL	/	P
		Hg	BL	/	P
		Cr(VI)	BL	/	P
		PBBs	BL	/	P
		PBDEs	BL	/	P
		DEHP	/	N.D.	P
		DBP	/	N.D.	P
		BBP	/	N.D.	P
		DIBP	/	N.D.	P
104	Orange soft plastic	Cd	BL	/	P
		Pb	BL	/	P
		Hg	BL	/	P
		Cr(VI)	BL	/	P
		PBBs	BL	/	P
		PBDEs	BL	/	P
		DEHP	/	N.D.	P
		DBP	/	N.D.	P
		BBP	/	N.D.	P
		DIBP	/	N.D.	P



RoHS Test Report

Part No.	Part Description	Restricted Substances	Results (mg/kg)		Conclusion (P/F)
			EDXRF	Chemical testing	
105	Black plastic (wire insulation)	Cd	BL	/	P
		Pb	BL	/	P
		Hg	BL	/	P
		Cr(VI)	BL	/	P
		PBBs	BL	/	P
		PBDEs	BL	/	P
		DEHP	/	N.D.	P
		DBP	/	N.D.	P
		BBP	/	N.D.	P
		DIBP	/	N.D.	P
106	Silvery metal	Cd	BL	/	P
		Pb	BL	/	P
		Hg	BL	/	P
		Cr(VI)	BL	/	P
		PBBs	/	/	P
		PBDEs	/	/	P
		DEHP	/	/	P
		DBP	/	/	P
		BBP	/	/	P
		DIBP	/	/	P
107	Golden metal	Cd	BL	/	P
		Pb	BL	/	P
		Hg	BL	/	P
		Cr(VI)	BL	/	P
		PBBs	/	/	P
		PBDEs	/	/	P
		DEHP	/	/	P
		DBP	/	/	P
		BBP	/	/	P
		DIBP	/	/	P
108	Golden metal	Cd	BL	/	P
		Pb	BL	/	P
		Hg	BL	/	P
		Cr(VI)	BL	/	P
		PBBs	/	/	P
		PBDEs	/	/	P
		DEHP	/	/	P
		DBP	/	/	P
		BBP	/	/	P
		DIBP	/	/	P



RoHS Test Report

Part No.	Part Description	Restricted Substances	Results (mg/kg)		Conclusion (P/F)
			EDXRF	Chemical testing	
109	Golden metal	Cd	BL	/	P
		Pb	BL	/	P
		Hg	BL	/	P
		Cr(VI)	BL	/	P
		PBBs	/	/	P
		PBDEs	/	/	P
		DEHP	/	/	P
		DBP	/	/	P
		BBP	/	/	P
		DIBP	/	/	P
110	Black soft plastic	Cd	BL	/	P
		Pb	BL	/	P
		Hg	BL	/	P
		Cr(VI)	BL	/	P
		PBBs	BL	/	P
		PBDEs	BL	/	P
		DEHP	/	N.D.	P
		DBP	/	N.D.	P
		BBP	/	N.D.	P
		DIBP	/	N.D.	P
111	Black rope	Cd	BL	/	P
		Pb	BL	/	P
		Hg	BL	/	P
		Cr(VI)	BL	/	P
		PBBs	BL	/	P
		PBDEs	BL	/	P
		DEHP	/	N.D.	P
		DBP	/	N.D.	P
		BBP	/	N.D.	P
		DIBP	/	N.D.	P
112	Black plastic (wire insulation)	Cd	BL	/	P
		Pb	BL	/	P
		Hg	BL	/	P
		Cr(VI)	BL	/	P
		PBBs	BL	/	P
		PBDEs	BL	/	P
		DEHP	/	N.D.	P
		DBP	/	N.D.	P
		BBP	/	N.D.	P
		DIBP	/	N.D.	P



RoHS Test Report

Part No.	Part Description	Restricted Substances	Results (mg/kg)		Conclusion (P/F)
			EDXRF	Chemical testing	
113	Blue plastic	Cd	BL	/	P
		Pb	BL	/	P
		Hg	BL	/	P
		Cr(VI)	BL	/	P
		PBBs	BL	/	P
		PBDEs	BL	/	P
		DEHP	/	N.D.	P
		DBP	/	N.D.	P
		BBP	/	N.D.	P
		DIBP	/	N.D.	P
114	Red plastic (wire insulation)	Cd	BL	/	P
		Pb	BL	/	P
		Hg	BL	/	P
		Cr(VI)	BL	/	P
		PBBs	BL	/	P
		PBDEs	BL	/	P
		DEHP	/	N.D.	P
		DBP	/	N.D.	P
		BBP	/	N.D.	P
		DIBP	/	N.D.	P
115	Black plastic (wire insulation)	Cd	BL	/	P
		Pb	BL	/	P
		Hg	BL	/	P
		Cr(VI)	BL	/	P
		PBBs	BL	/	P
		PBDEs	BL	/	P
		DEHP	/	N.D.	P
		DBP	/	N.D.	P
		BBP	/	N.D.	P
		DIBP	/	N.D.	P
116	Silvery metal	Cd	BL	/	P
		Pb	BL	/	P
		Hg	BL	/	P
		Cr(VI)	BL	/	P
		PBBs	/	/	P
		PBDEs	/	/	P
		DEHP	/	/	P
		DBP	/	/	P
		BBP	/	/	P
		DIBP	/	/	P



RoHS Test Report

Part No.	Part Description	Restricted Substances	Results (mg/kg)		Conclusion (P/F)
			EDXRF	Chemical testing	
117	Red plastic	Cd	BL	/	P
		Pb	BL	/	P
		Hg	BL	/	P
		Cr(VI)	BL	/	P
		PBBs	BL	/	P
		PBDEs	BL	/	P
		DEHP	/	N.D.	P
		DBP	/	N.D.	P
		BBP	/	N.D.	P
		DIBP	/	N.D.	P
118	White plastic	Cd	BL	/	P
		Pb	BL	/	P
		Hg	BL	/	P
		Cr(VI)	BL	/	P
		PBBs	BL	/	P
		PBDEs	BL	/	P
		DEHP	/	N.D.	P
		DBP	/	N.D.	P
		BBP	/	N.D.	P
		DIBP	/	N.D.	P
119	Solder	Cd	BL	/	P
		Pb	BL	/	P
		Hg	BL	/	P
		Cr(VI)	BL	/	P
		PBBs	/	/	P
		PBDEs	/	/	P
		DEHP	/	/	P
		DBP	/	/	P
		BBP	/	/	P
		DIBP	/	/	P
120	Black PCB	Cd	BL	/	P
		Pb	BL	/	P
		Hg	BL	/	P
		Cr(VI)	BL	/	P
		PBBs	BL	/	P
		PBDEs	BL	/	P
		DEHP	/	N.D.	P
		DBP	/	N.D.	P
		BBP	/	N.D.	P
		DIBP	/	N.D.	P



Report No. HTT202412906CH

RoHS Test Report

Note:

mg/kg = milligram per kilogram = ppm

N.D. = Not detected (<MDL)

BL=Less than screening limits of XRF

D = DETECTED = Inconclusive

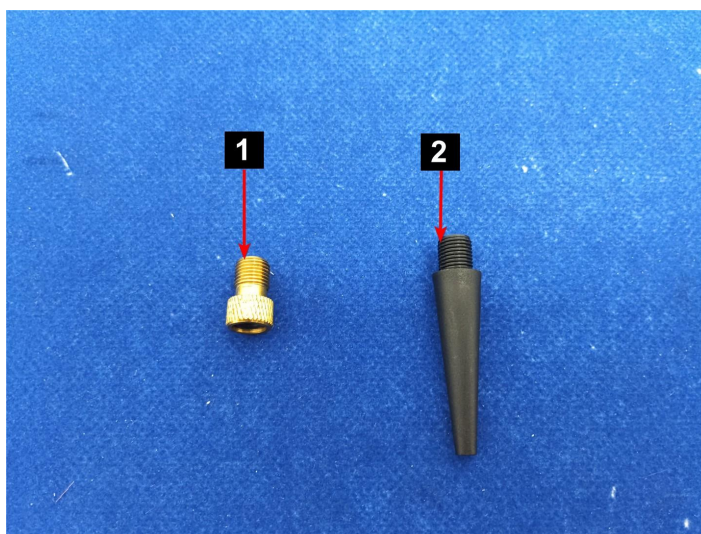
P = PASS

F = FAIL

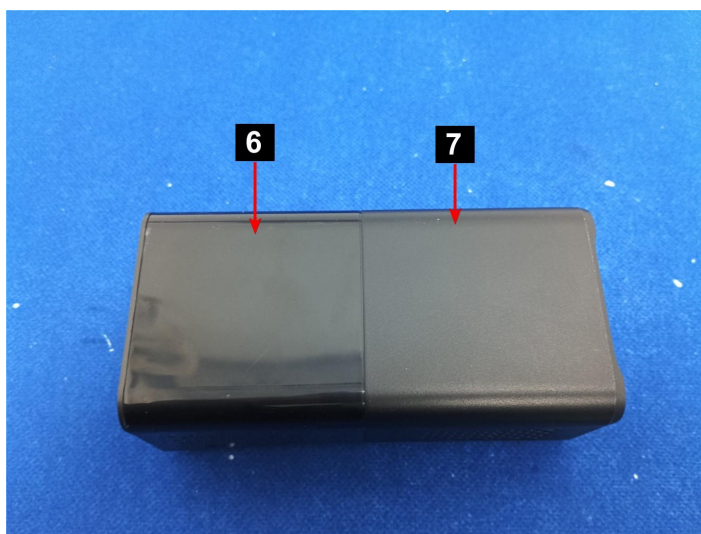
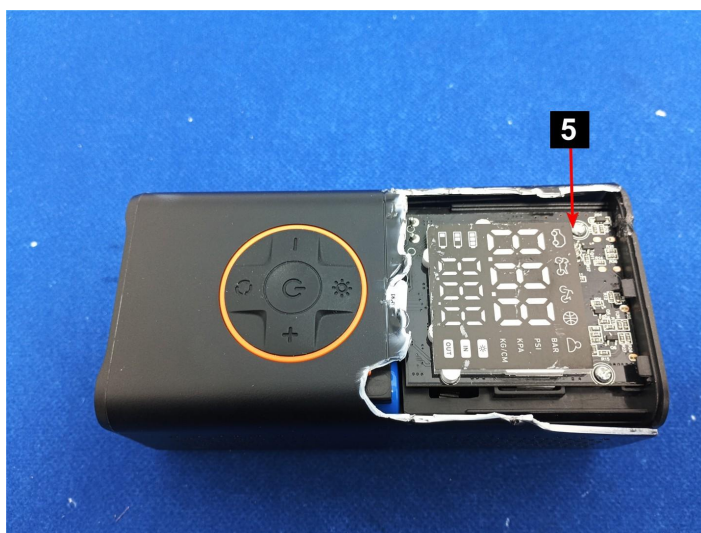
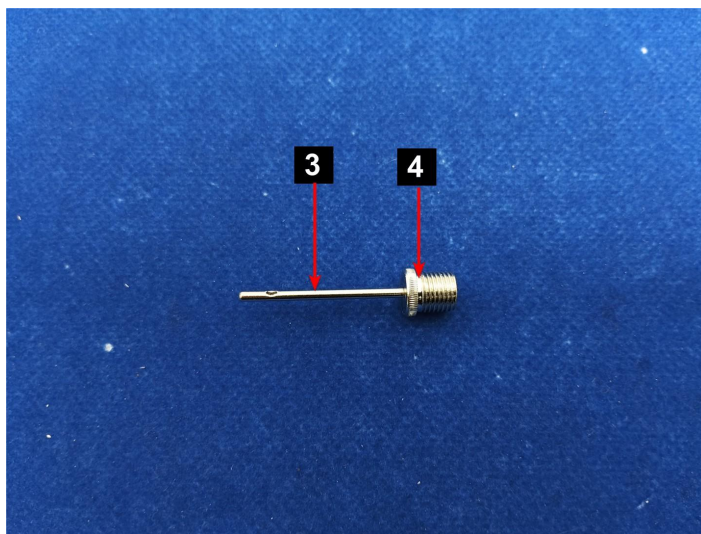
/ = Not available

RoHS Test Report

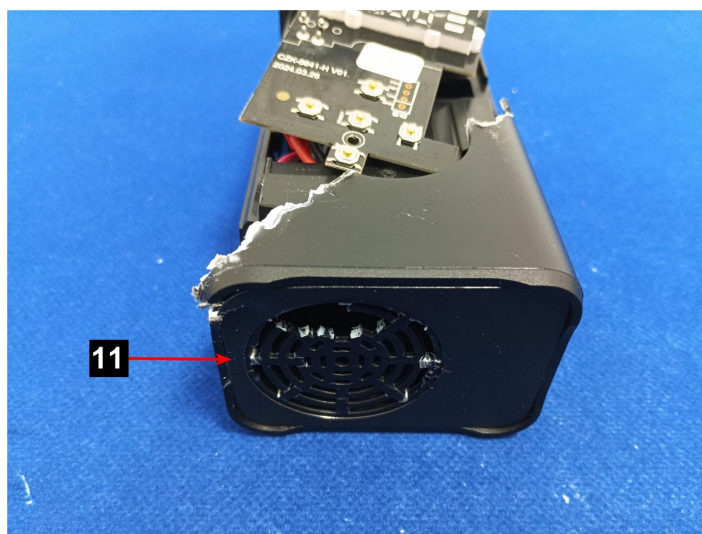
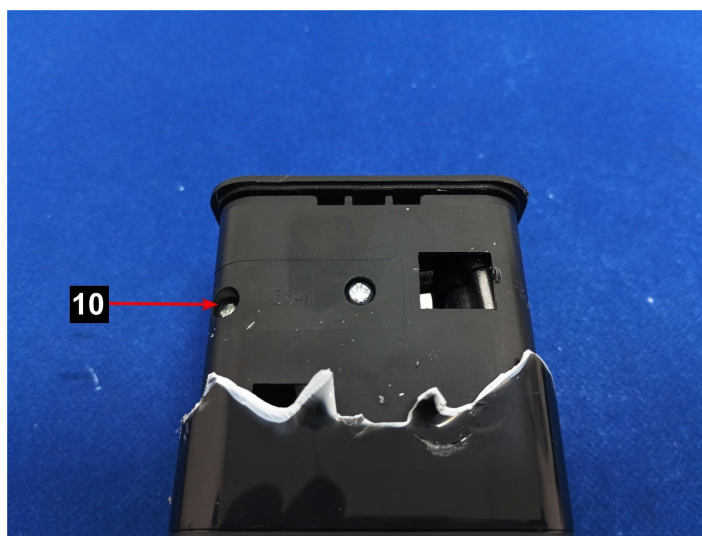
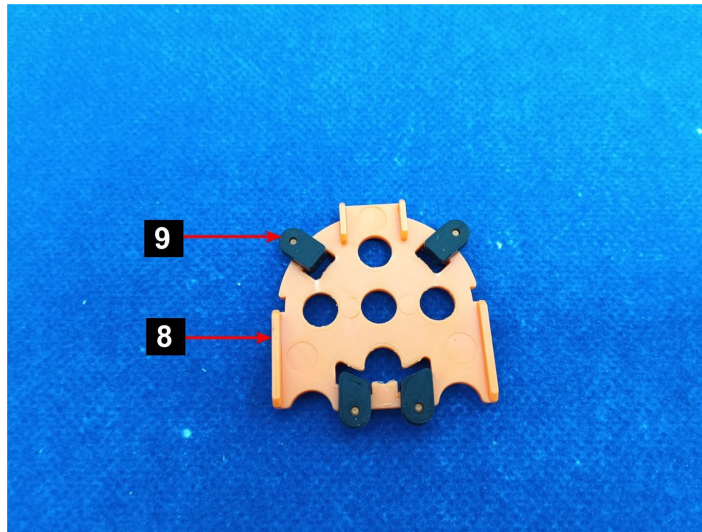
Photo(s) of the sample(s)



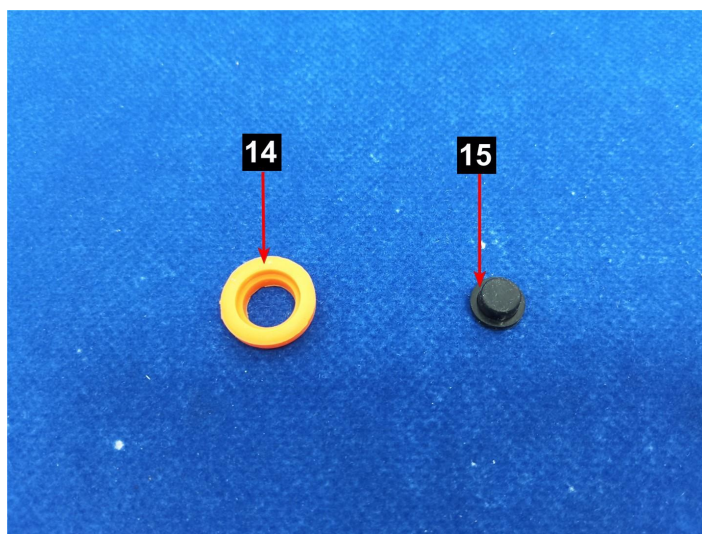
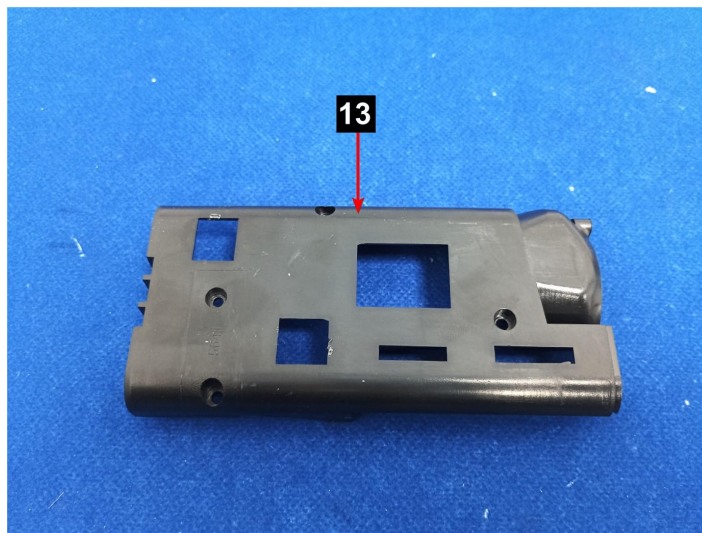
RoHS Test Report



RoHS Test Report

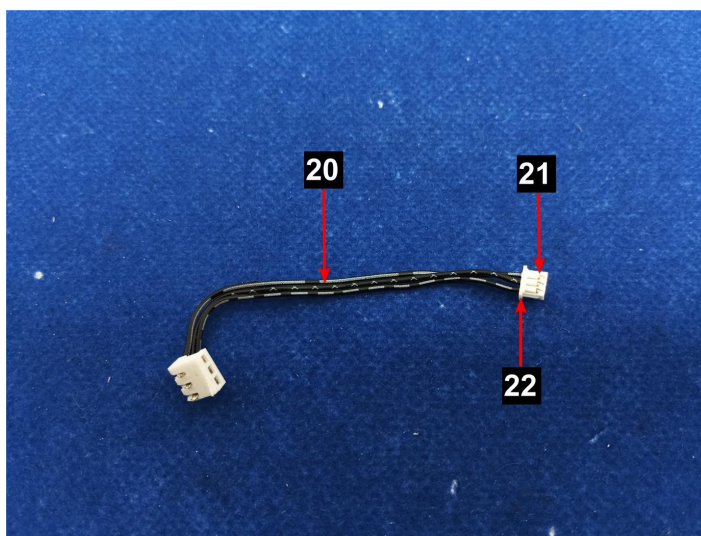
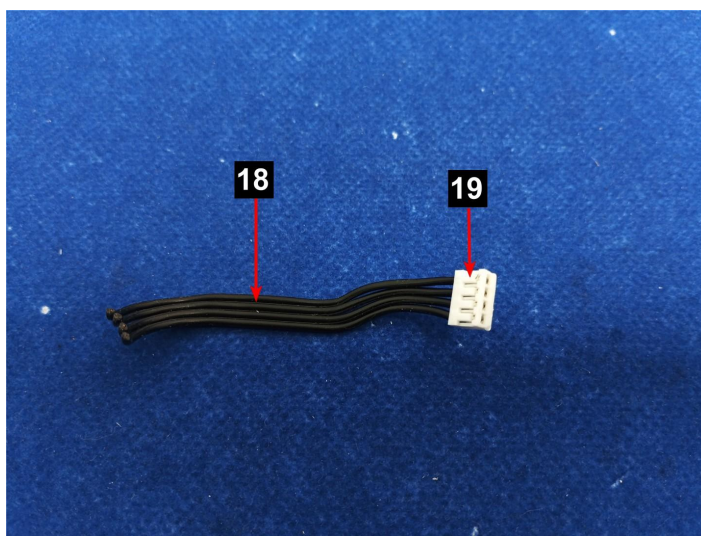
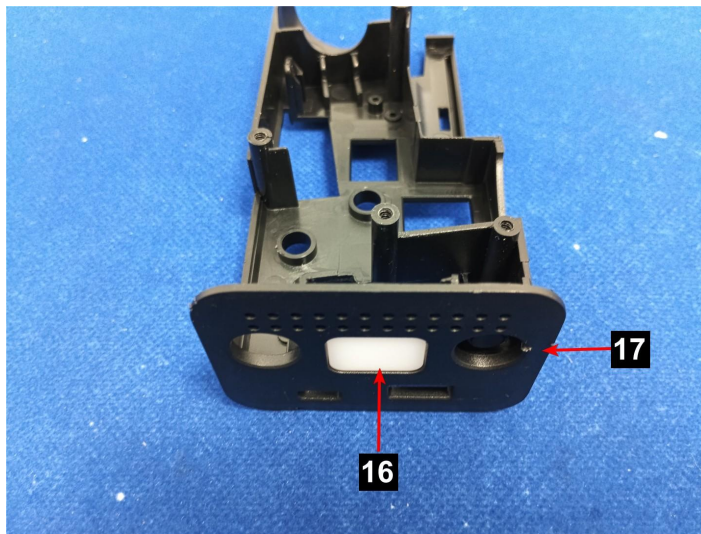


RoHS Test Report

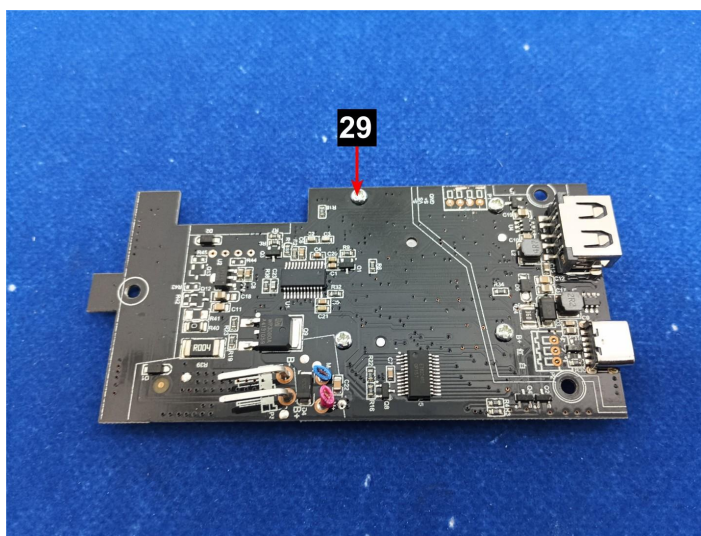
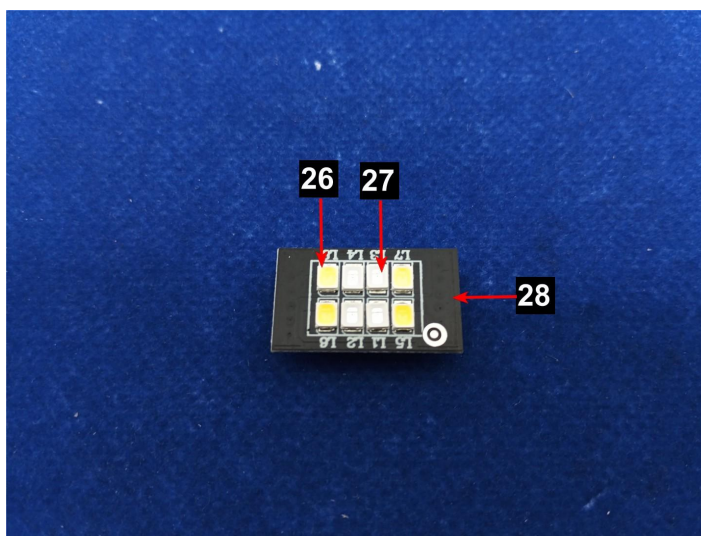
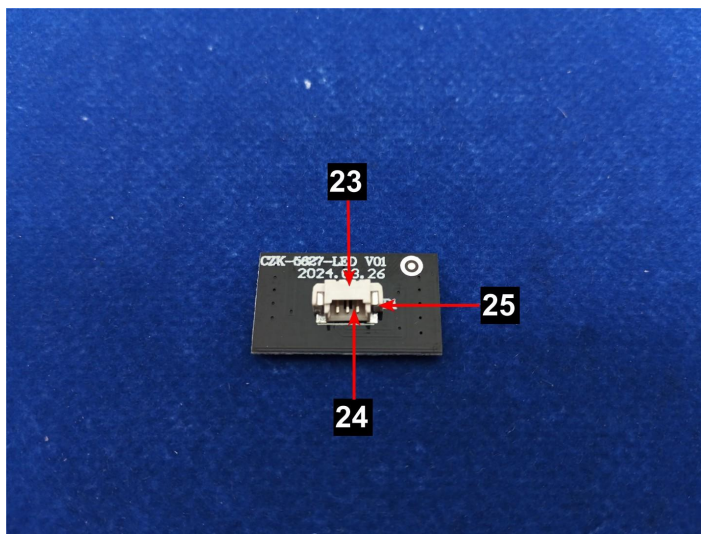




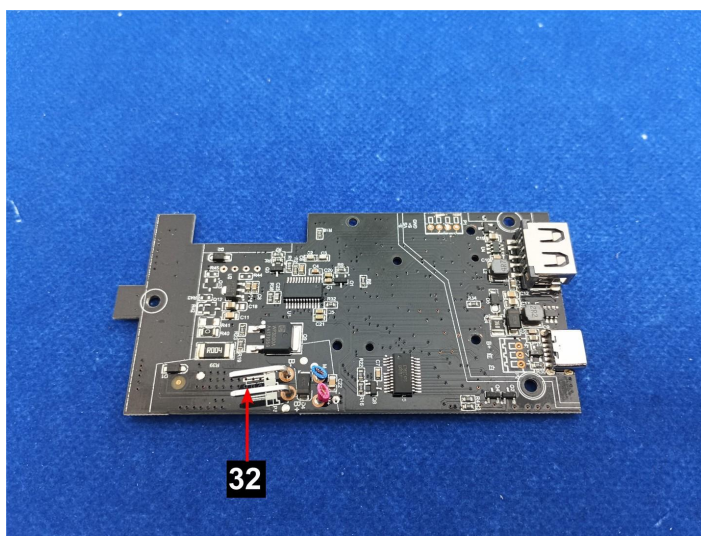
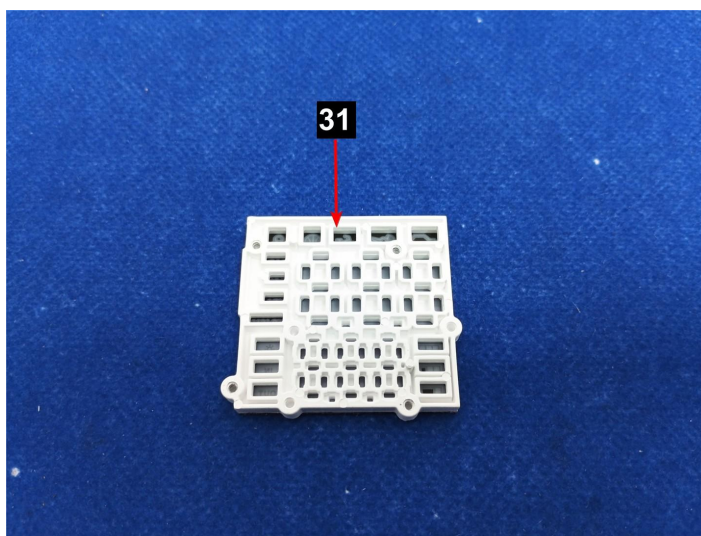
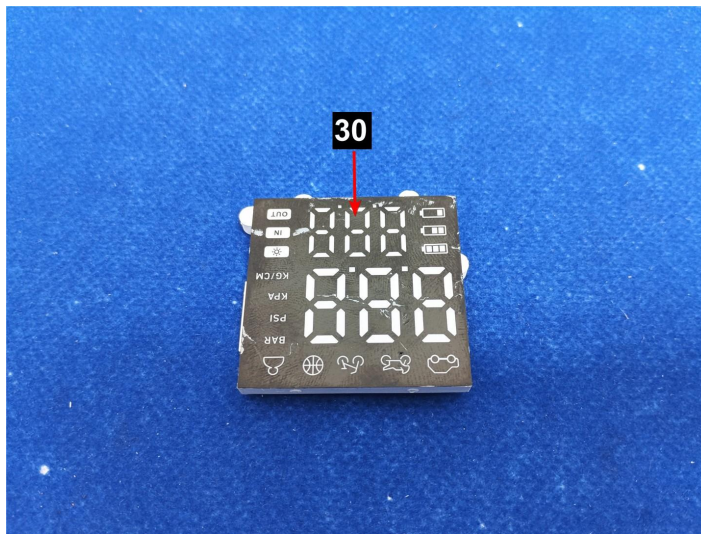
RoHS Test Report



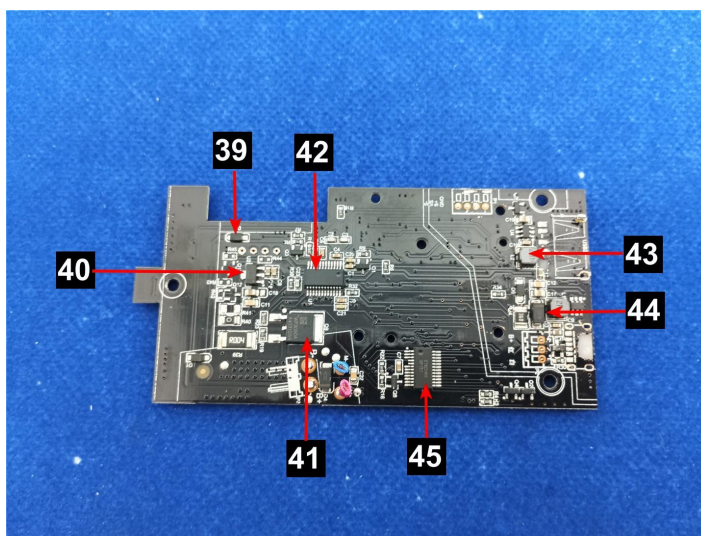
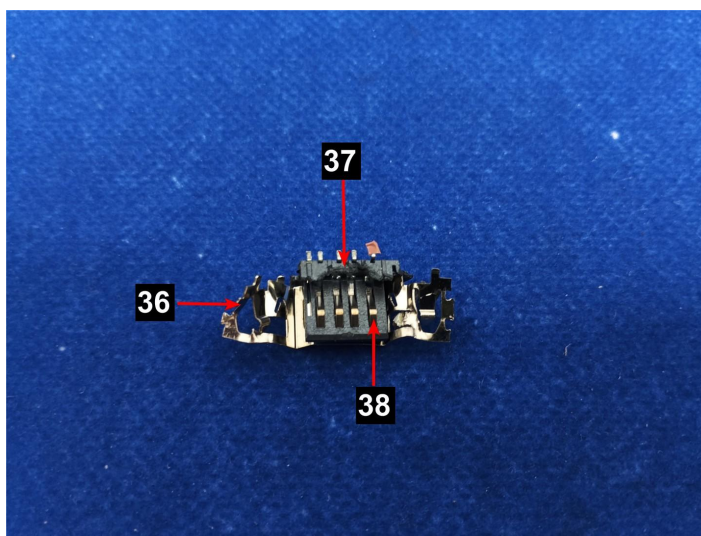
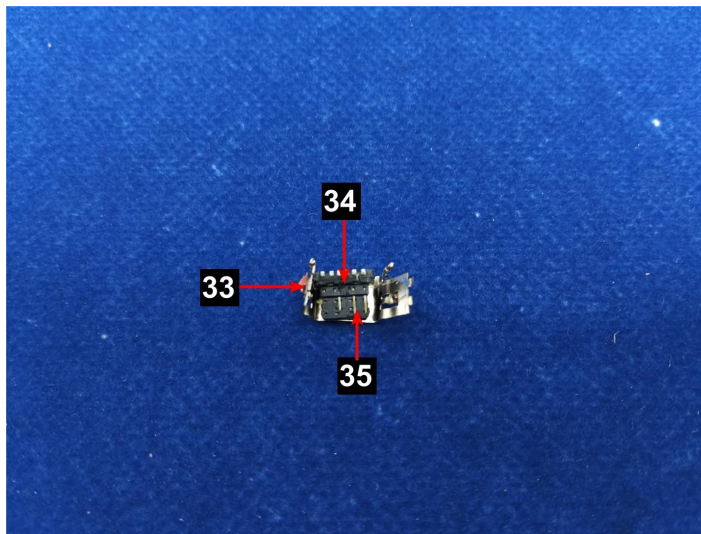
RoHS Test Report



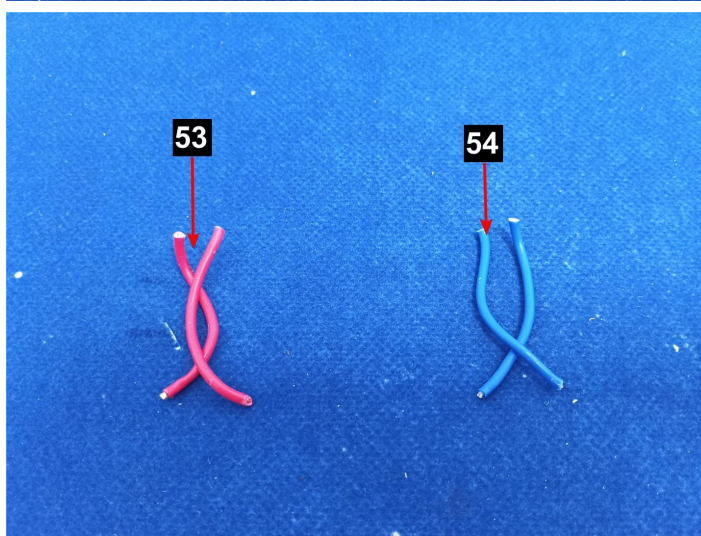
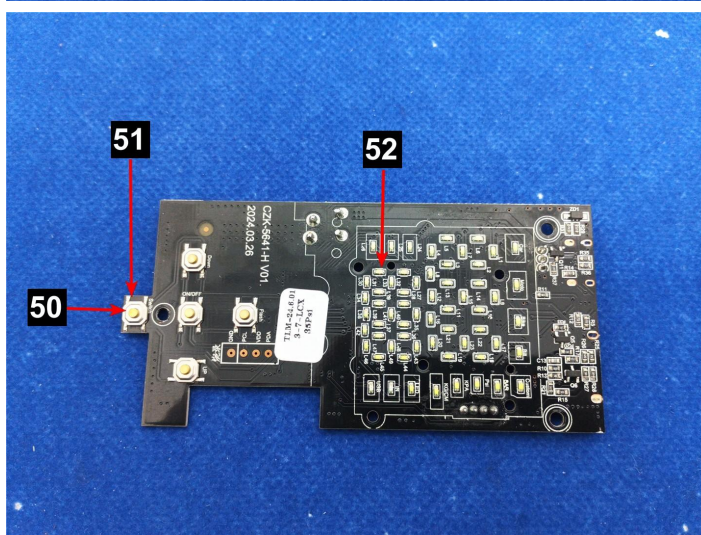
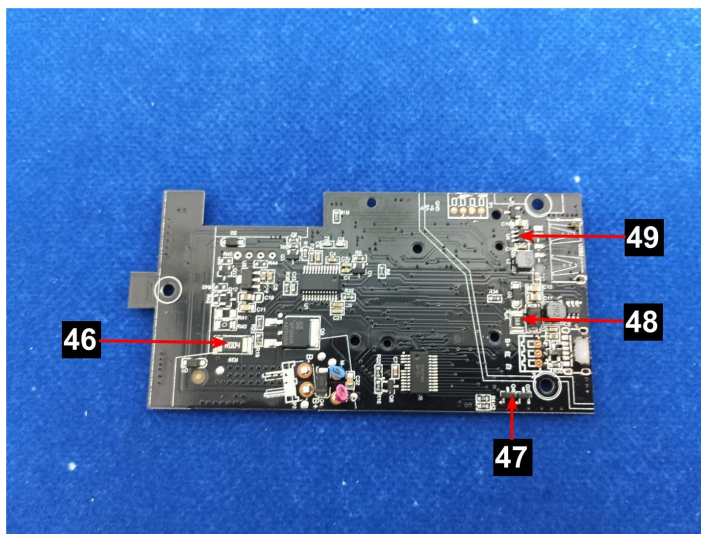
RoHS Test Report



RoHS Test Report

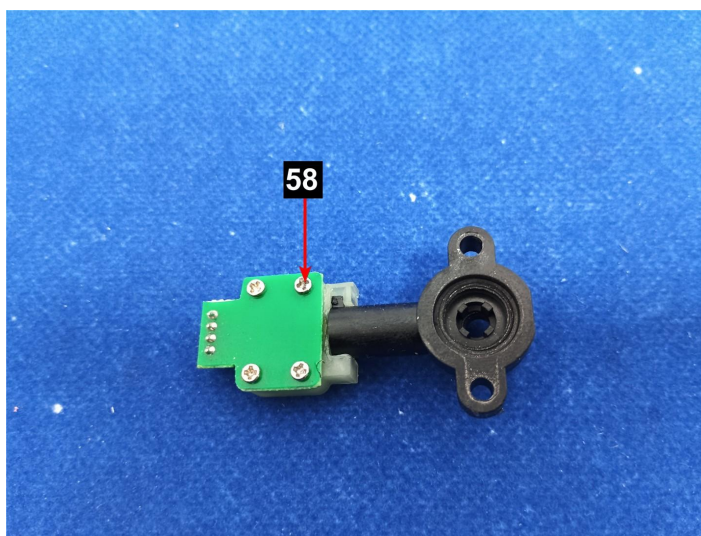
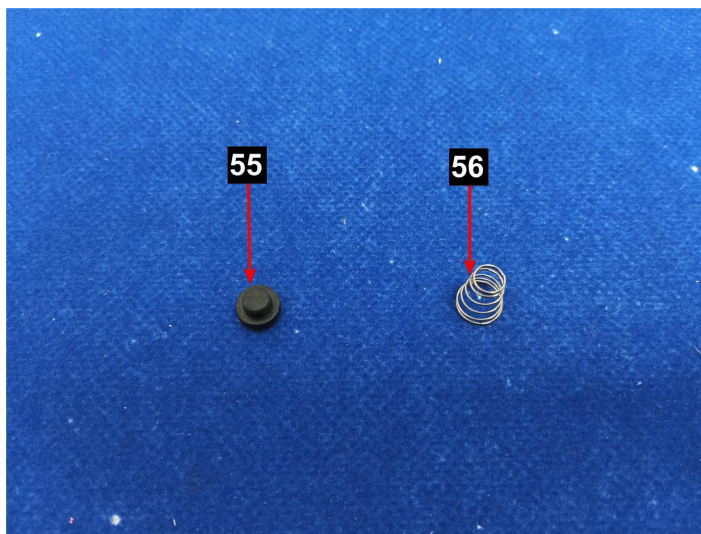


RoHS Test Report

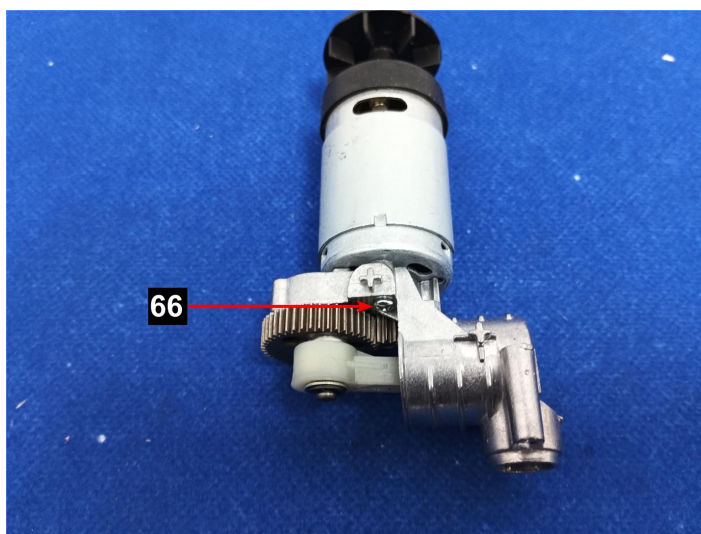
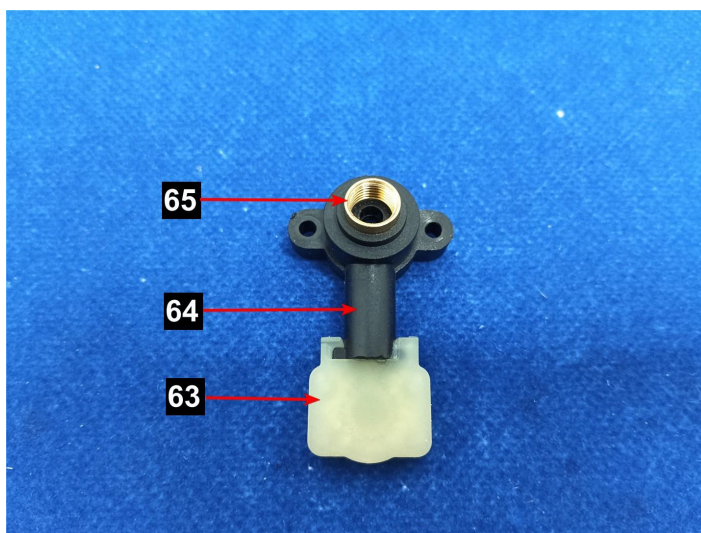
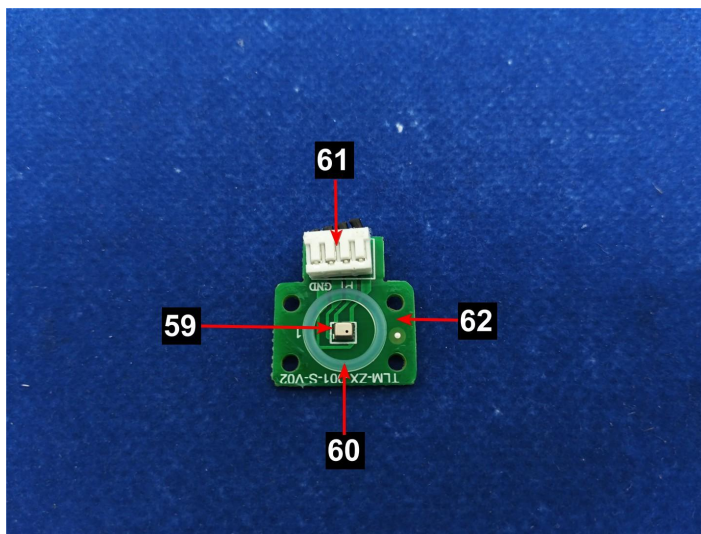




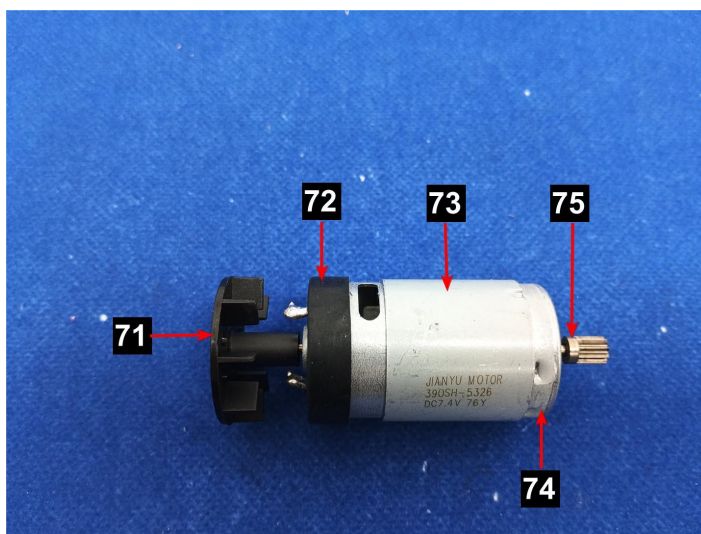
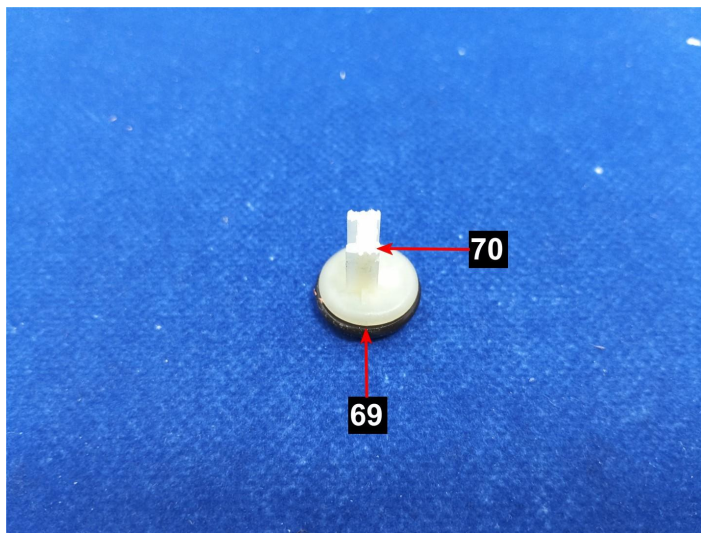
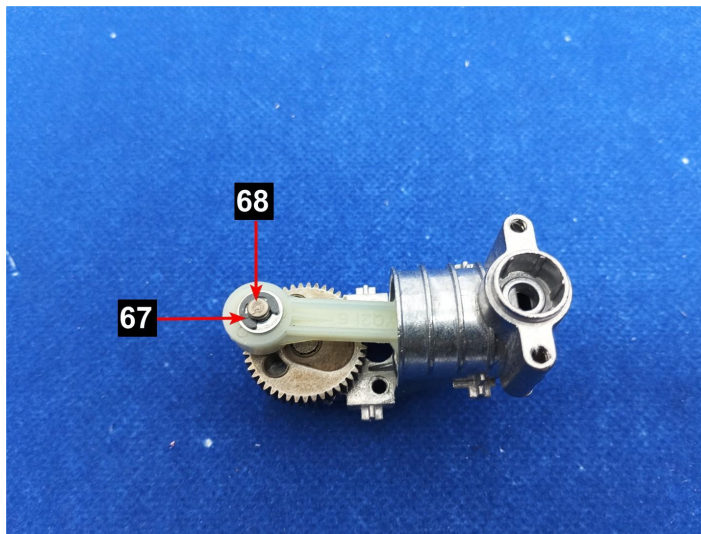
RoHS Test Report



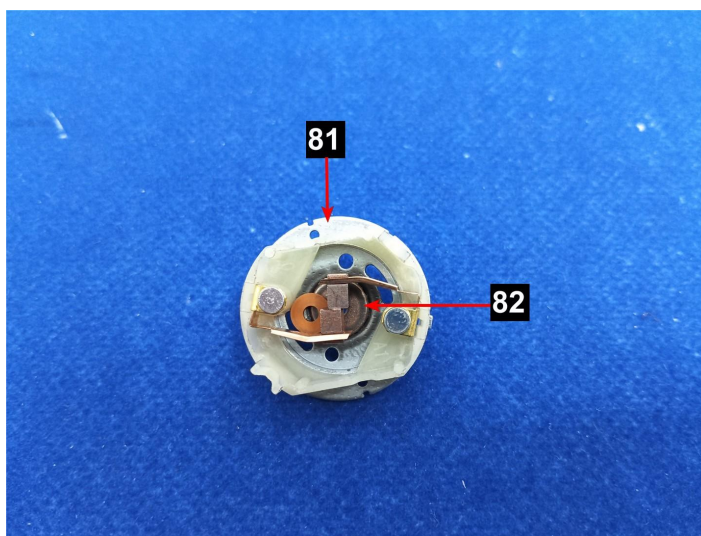
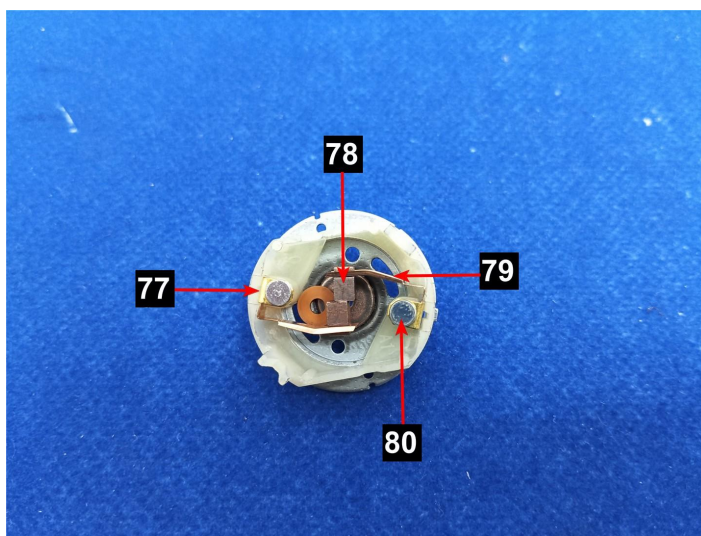
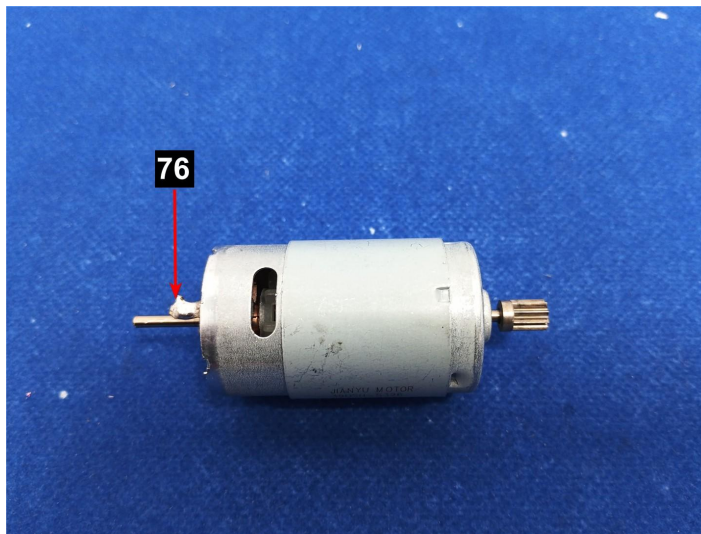
RoHS Test Report



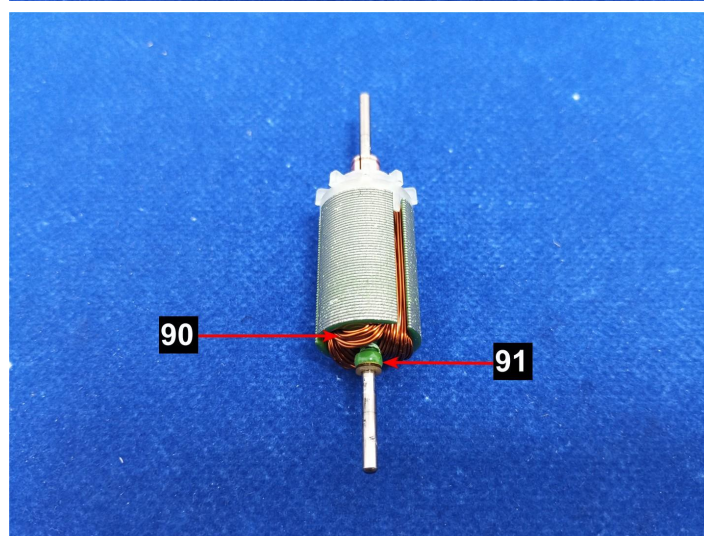
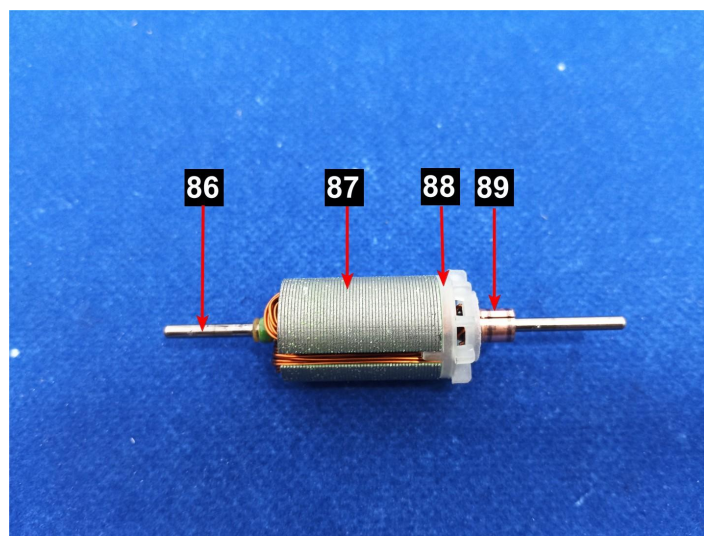
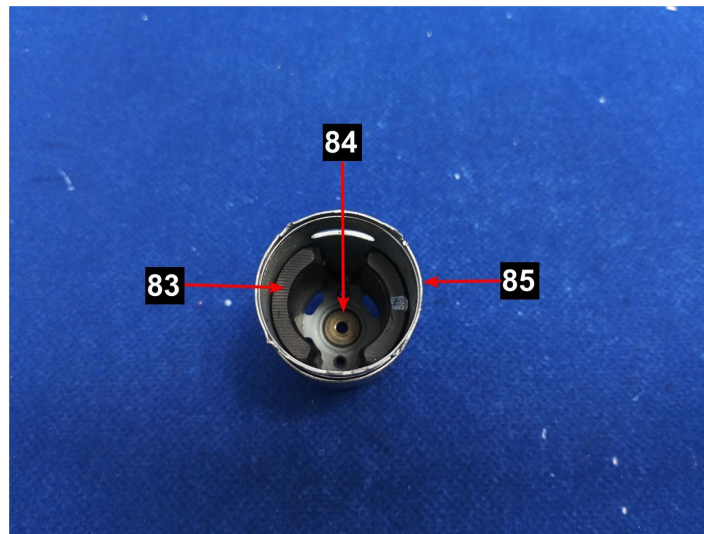
RoHS Test Report



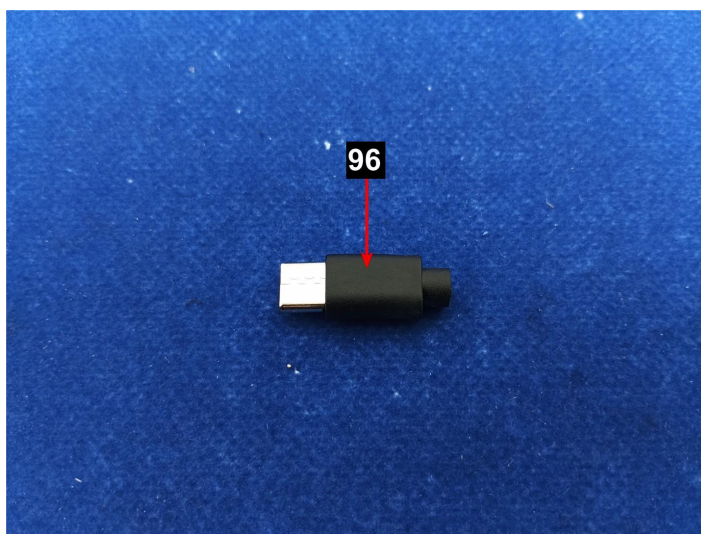
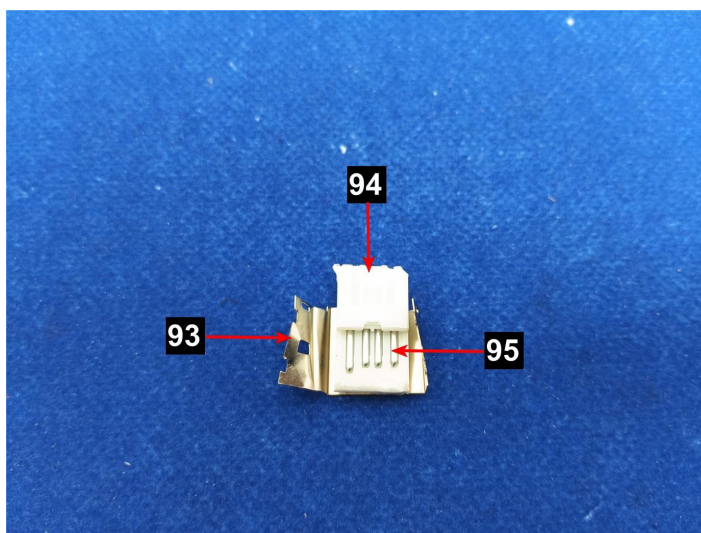
RoHS Test Report



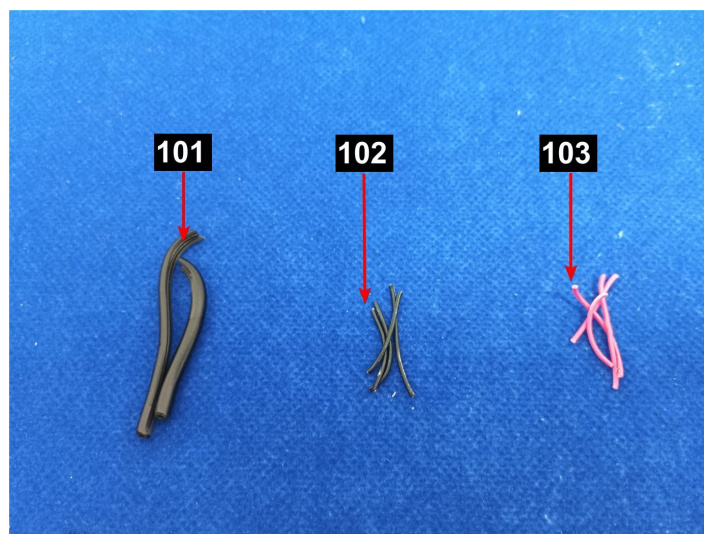
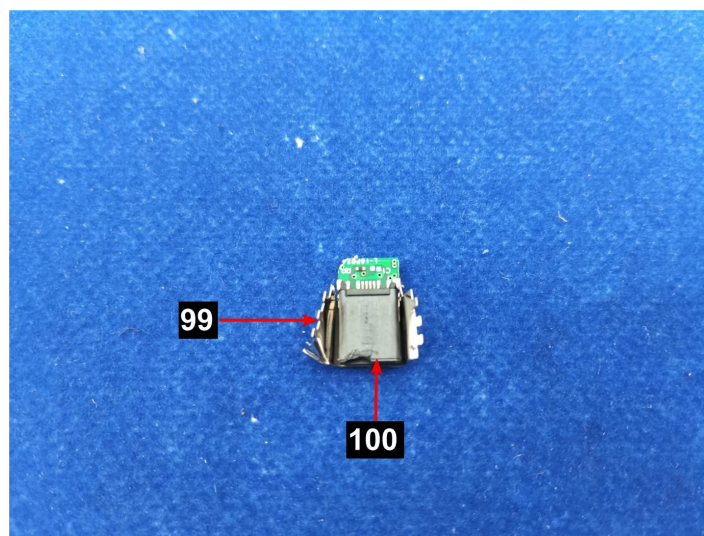
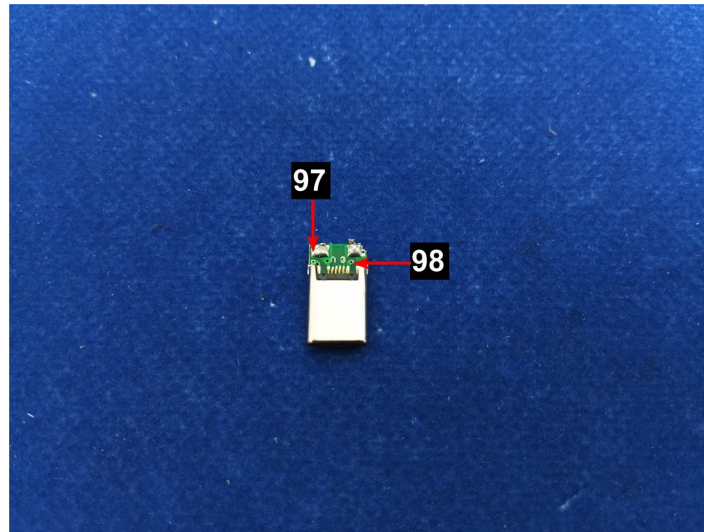
RoHS Test Report



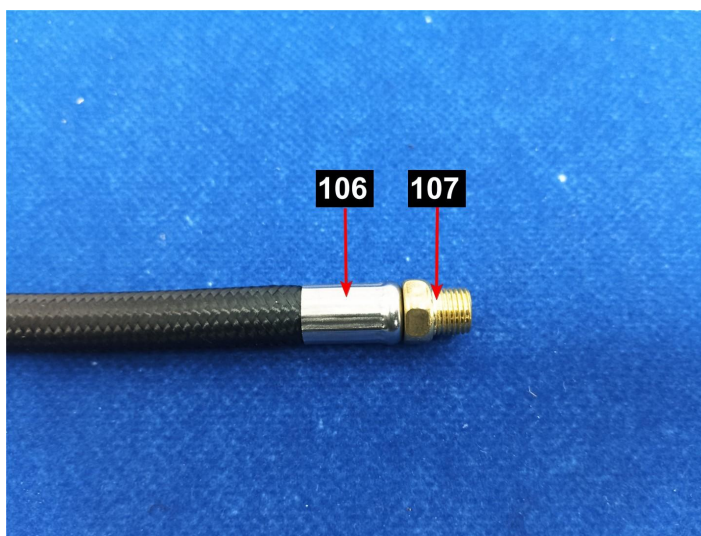
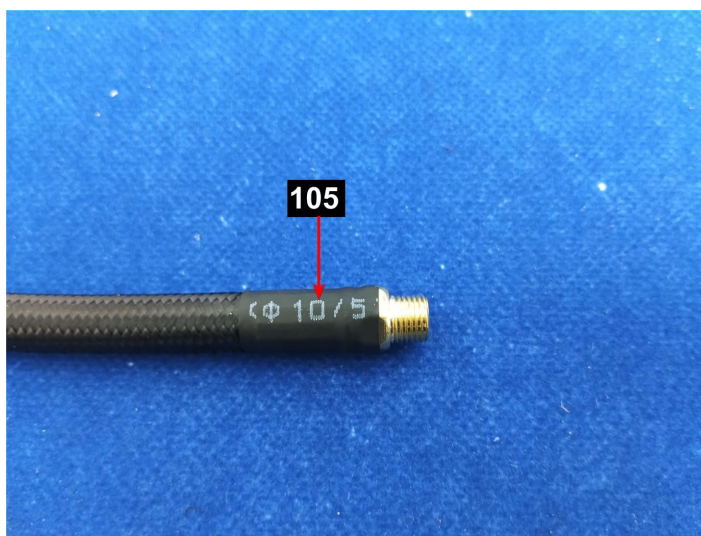
RoHS Test Report



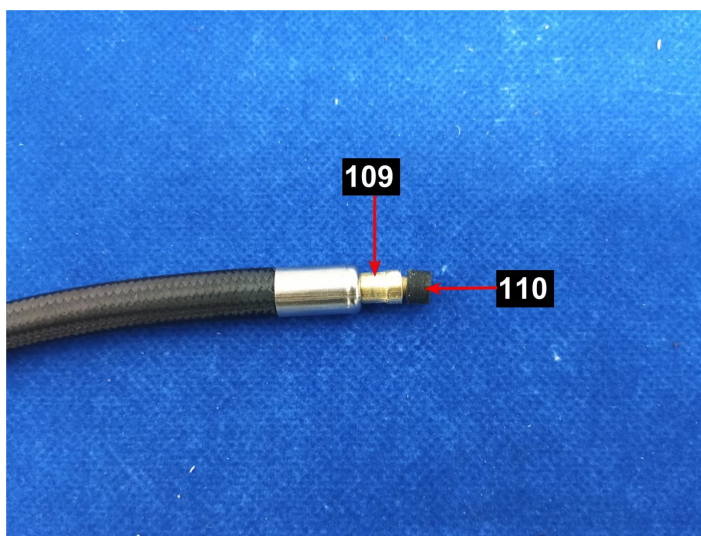
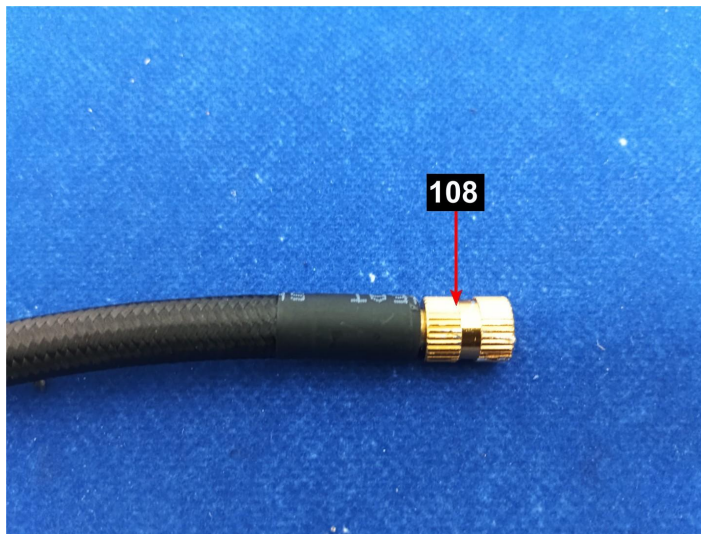
RoHS Test Report



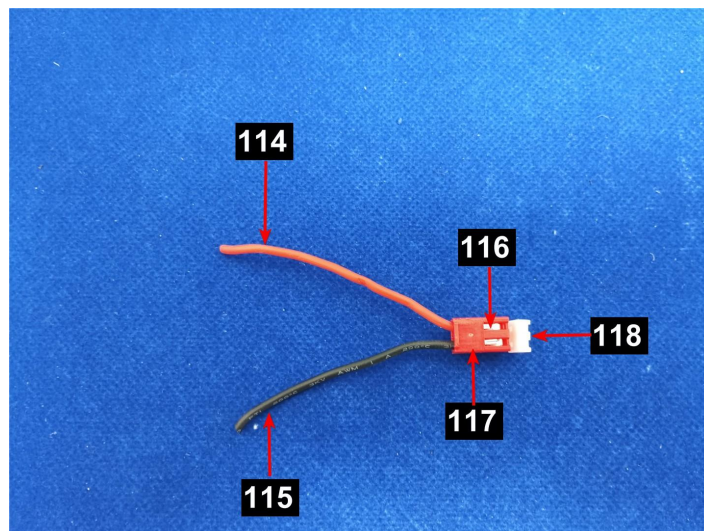
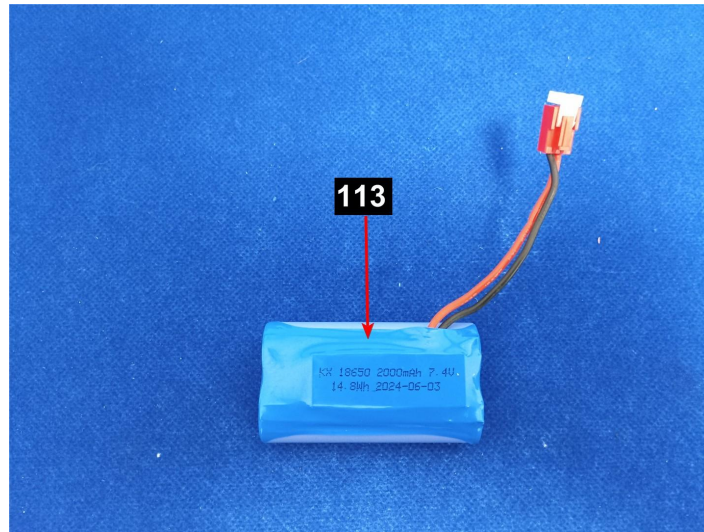
RoHS Test Report



RoHS Test Report

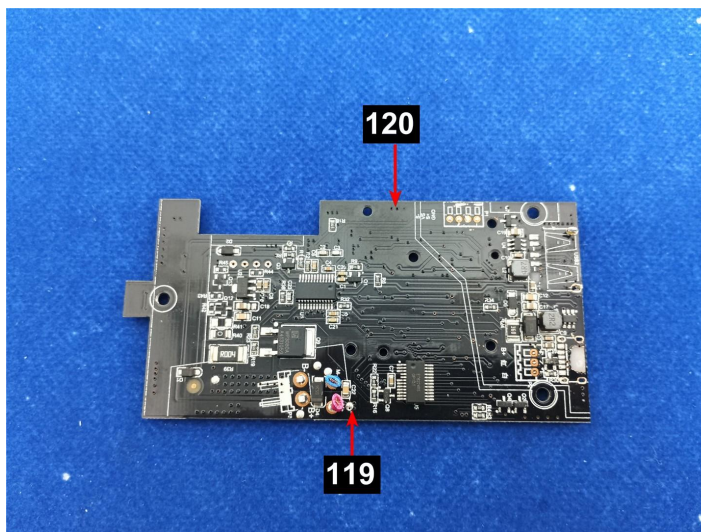


RoHS Test Report





RoHS Test Report



This test document cannot be reproduced in any way, except in full context, without the prior approval in writing of the laboratory. The result of this test report is based on our received samples only.

*** End of report ***