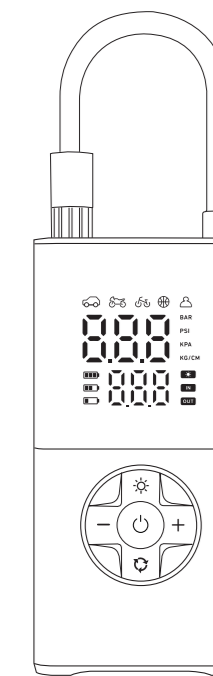


车载充气泵

用户手册



(使用前请详细阅读本手册)

警告

禁止儿童单独操作。
请勿在阳光直射或高温/高压下使用。
请勿将机器投入水中；请勿在雨中使用或水中使用本机。
不要一次使用超过10分钟，关闭电源，需冷却至少30分钟。
不使用时关闭电源开关。

遵守这些规则和所有的指示，以避免财产损失、电机、烧伤等其他伤害。

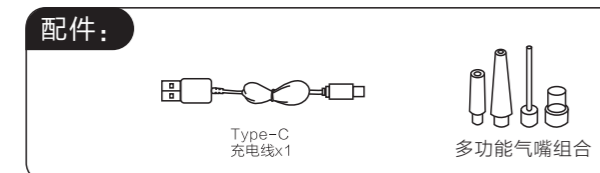
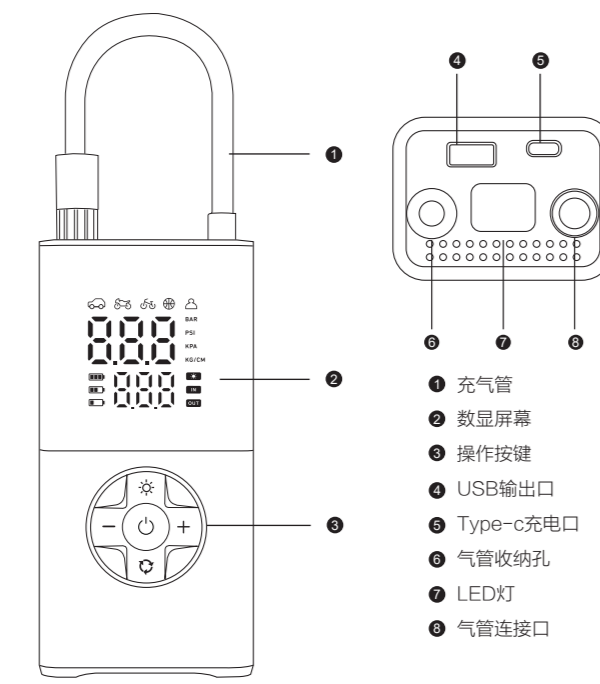
注意

为了减少触电的危险，不要暴露在雨中，存放在室内并远离火源。
注意：1.本产品正常操作，应确保安全使用。关于正常使用。
2.为确保气泵良好工作，连续充气时间不应过长，如需长时间运转，请间歇性休息。

产品参数

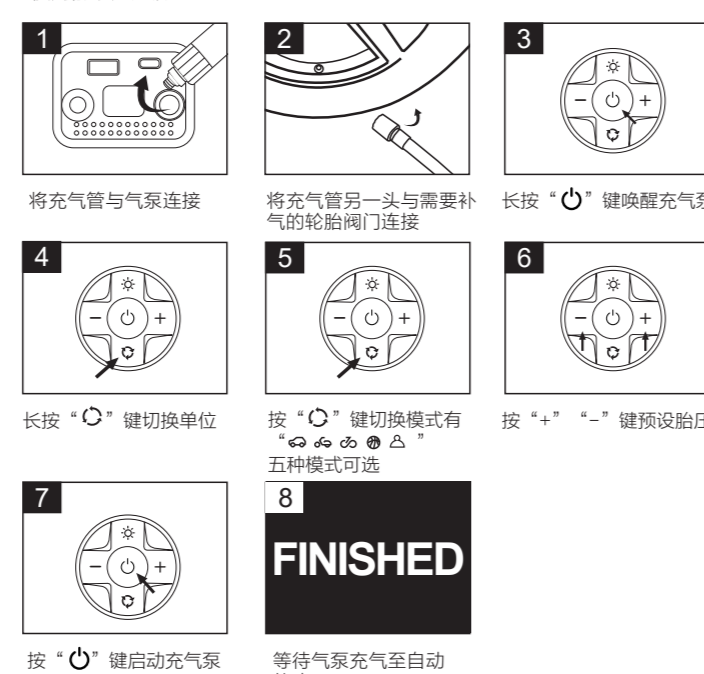
产品名称	充电款
产品型号	CZK-5641
电压	7.4 V
功率	50W
电池容量	2000mAh*2

产品描述



使用说明

使用说明
*使用前请先充满电



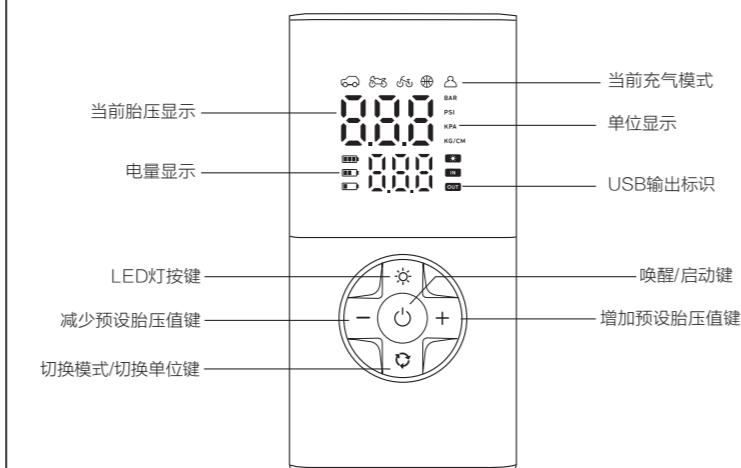
FINISHED

五种模式



预设胎压

长按“O”切换单位，按“+”或“-”键加减数值，设置完毕后需等待几秒，待数字停止闪动后，打开充气开关开始工作。充气到指定气压，充气泵自动停止。



保修卡

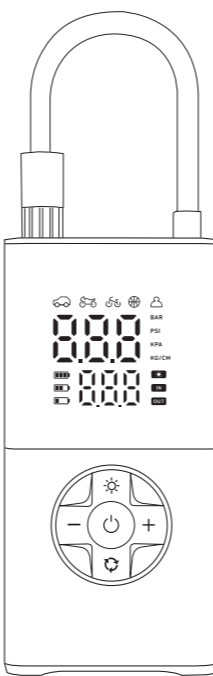
用户姓名	联系电话
用户地址	
电子邮箱	QQ号码
购买地址	经销商

保修说明:

- 1.本保修卡请用户妥善保管，以作保修凭证，遗失恕不补发。
- 2.本产品购买之日起三个月内为保修期，在保修期内，因产品质量问题，用户可凭此卡随购机发票或发票复印件，向我司或当地经销商联系，由我司负责“三包”。
- 3.非质量问题，不在三包内。

Tire Inflator

USER MANUAL



(Please read this manual prior to using this product)

WARNING

Children must not operate the Tire Inflator alone.
Never use the Tire Inflator in direct sunlight, high temperatures, or high pressure environments.
Keep the Tire Inflator away from water and rain; it is not suitable for use in water.
To avoid damage, excess heat, toxic fumes, fire, or explosion, turn off and allow the Tire Inflator to cool for 30 minutes after 10 minutes of use.
Always turn off the power switch after use.
Before using the product, carefully read all warnings and instructions. Improper use can result in product damage beyond the Seller's responsibility.

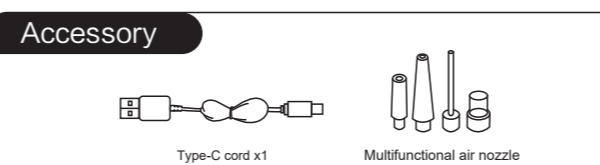
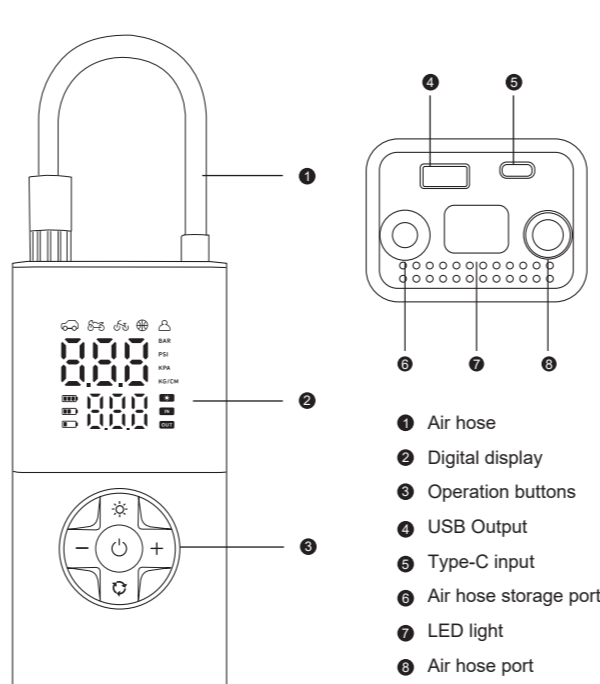
ATTENTION

To minimize the risk of electric shock, refrain from exposing your Tire Inflator to rain. It is recommended to store it indoors and away from any sources of fire.
Attention:
1. This product may experience slight heating during normal operation, which is deemed a typical occurrence.
2. In order to prolong the air pump's lifespan, we do not recommend continuous inflation for more than 10 minutes. Should prolonged use be necessary, intermittent breaks are advised to allow for the cooling down of your tire inflator.

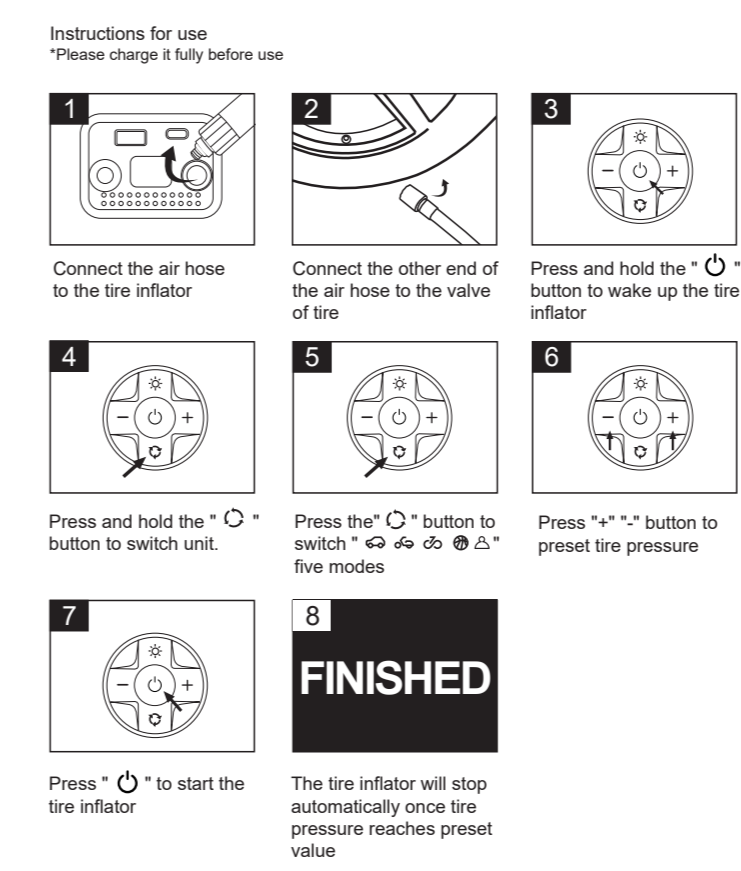
PRODUCT PARAMETER

Product version	Cordless
Product model	CZK-5641
Voltage	7.4 V
Power	50W
Battery capacity	2000mAh*2

LAYOUT



OPERATION GUIDE



Four modes



Preset tire pressure

Press and hold "O" to switch the unit. Use the "+" or "-" button to adjust the numerical value, and wait a few seconds after setting for the numbers to stop flashing. Then turn on the Start Button to start the process. The tire inflator will automatically stop inflating when it reaches the specified air pressure.

